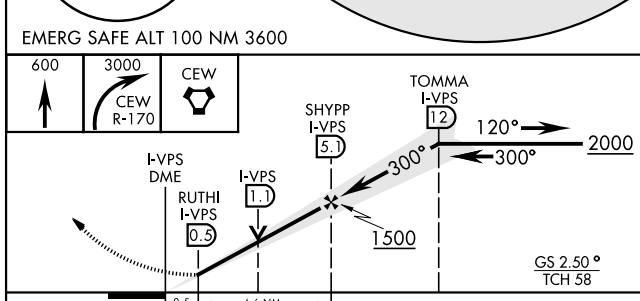
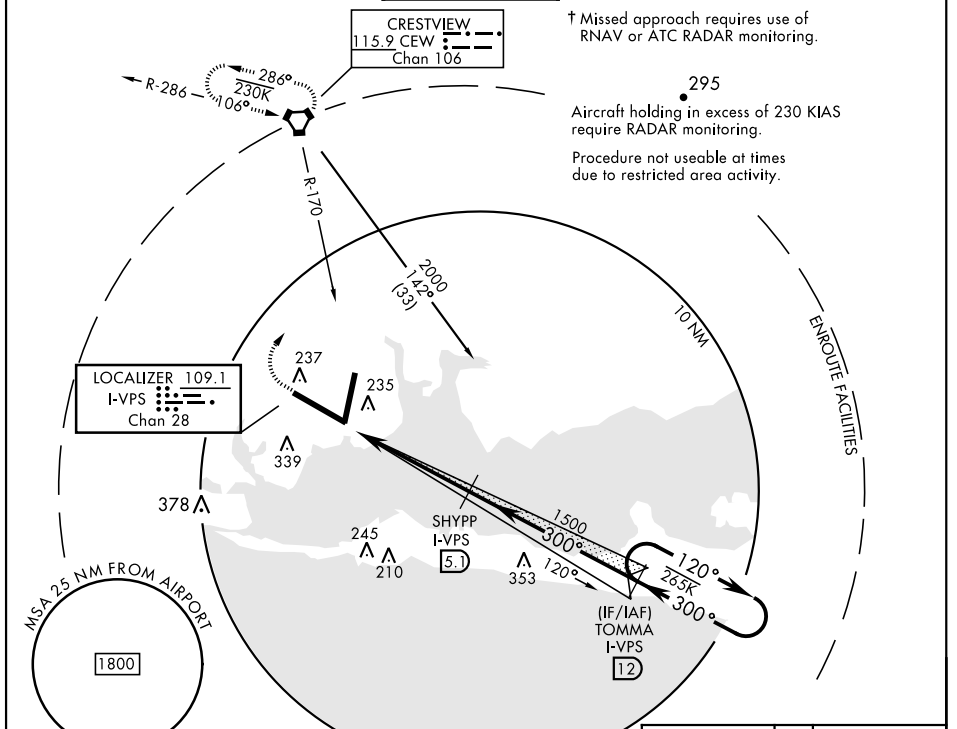


# ILS Y or LOC Y RWY 30

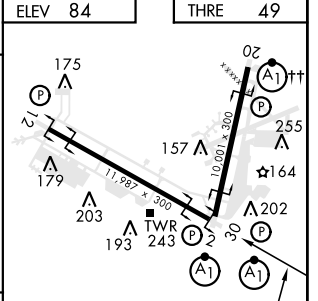
LOC I-VPS <b>109.1</b> Chan <b>28</b>	APCH CRS <b>300°</b>	Rwy Idg <b>11,987</b> THRE <b>49</b> Arprt Elev <b>84</b>	AL-436 [USAF] EGLIN AFB/DESTIN-FT WALTON BEACH(KVPS)
---	-------------------------	---	--

DME or RADAR required. (for LOC approach) ALSF-1  
 \* When ALS inop, increase RVR to 40, vis to 3/4 mile.  
 \*\* When ALS inop, increase RVR to 55, vis to 1 mile.  
 † MISSED APPROACH: Climb straight ahead to 600, then climbing right turn to 3000, intercept CEW VORTAC R-170 to CEW and hold.

ATIS * <b>134.625 273.5</b>	APP CON <b>125.1 281.45</b> 271°-089° <b>132.1 360.6</b> 090°-270°	TOWER <b>118.2 353.65</b>	GND CON <b>121.8 335.8</b>	CLNC DEL <b>127.7 377.2</b>
--------------------------------	--	------------------------------	-------------------------------	--------------------------------



CATEGORY	A	B	C	D	E
S-ILS 30*	249/24		200	(200-1/2)	
S-LOC 30**	420/24	371 (400-1/2)	420/35	371 (400-5/8)	
CIRCLING	660-1	576 (600-1)	760-2 676 (700-2)	760-2 1/4 676 (700-2 1/4)	760-2 1/2 676 (700-2 1/2)



HIRL all rwys  
 †† Rwy 20 apch lgt 1500' nonstandard.

FAF to MAP 4.6 NM

Knots	60	90	120	150	180
Min:Sec	4:36	3:04	2:18	1:50	1:32

# ILS Y or LOC Y RWY 30

SE-3, 22 FEB 2024 to 21 MAR 2024

SE-3, 22 FEB 2024 to 21 MAR 2024