

VALPARAISO, FLORIDA

RNAV (GPS) Z RWY 2

APCH CRS	Rwy ldg	10,001
015°	TDZE	59
	Arprt Elev	84

AL-436 [USAF] EGLIN AFB/DESTIN-FT WALTON BEACH (KVPS)

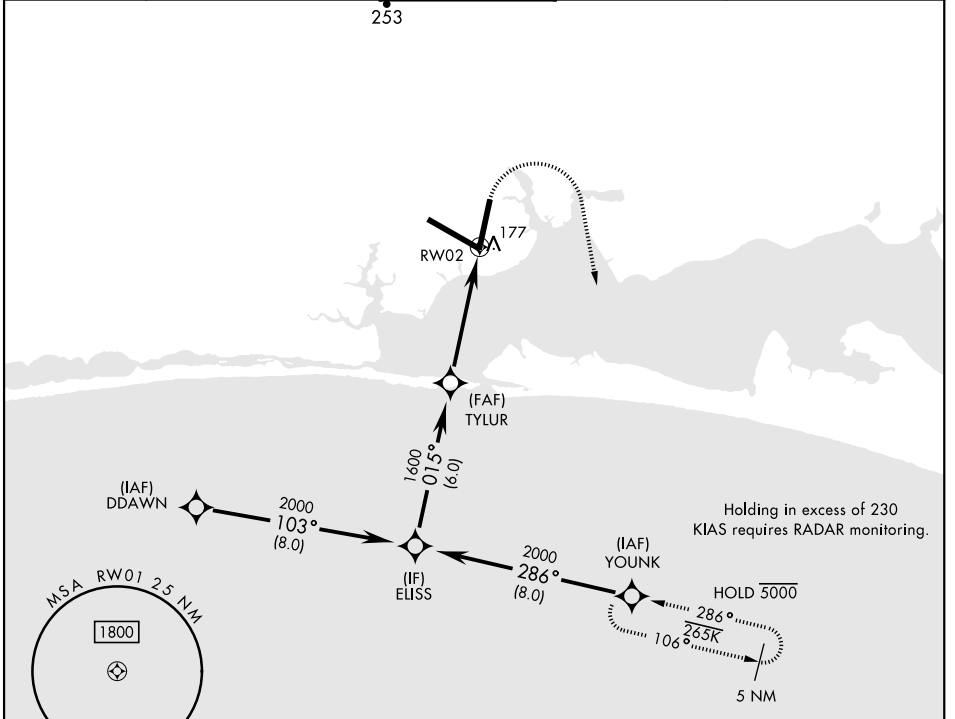
RNP APCH

* When ALS inop, increase CAT AB RVR to 55 and vis to 1 mile, CAT CDE RVR TO 60, vis to 1½ miles.

ALSF-1

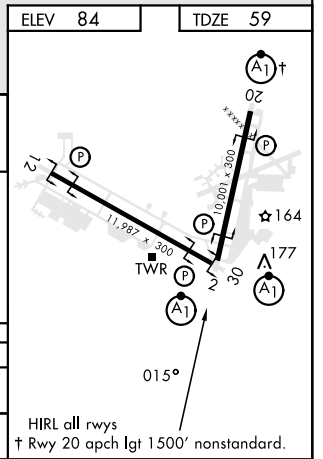
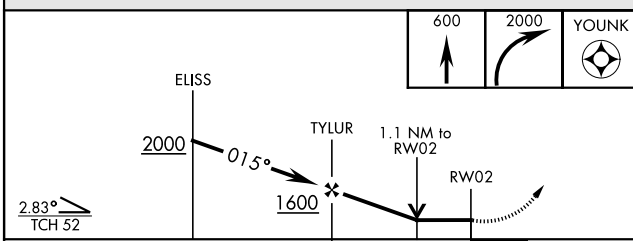
MISSED APPROACH: Climb to 600, then climbing right turn to 2000 direct YOUNK and hold.

ATIS ★	APP CON	TOWER	GND CON	CLNC DEL
134.625 273.5	125.1 281.45 271°-089° 132.1 360.6 090°-270°	118.2 353.65	121.8 335.8	127.7 377.2



EMERG SAFE ALT 100 NM 3500

ELEV	84	TDZE	59
------	----	------	----



CATEGORY	A	B	C	D	E
LNAV MDA *	460/40 401 (400-34)				
CIRCLING	580-1	496 (500-1)	680-1½ 596 (600-1½)	680-2	596 (600-2)

HIRL all rwys
† Rwy 20 apch lgt 1500' nonstandard.

VALPARAISO, FLORIDA
Orig 15JUN23

30°29'N-86°32'W

EGLIN AFB/DESTIN-FT WALTON BEACH (KVPS)

RNAV (GPS) Z RWY 2

SE-3, 22 FEB 2024 to 21 MAR 2024

SE-3, 22 FEB 2024 to 21 MAR 2024