

APCH CRS 303°	Rwy Idg TDZE Arprt Elev	11,987 69 84
-------------------------	-------------------------------	-----------------------------------------

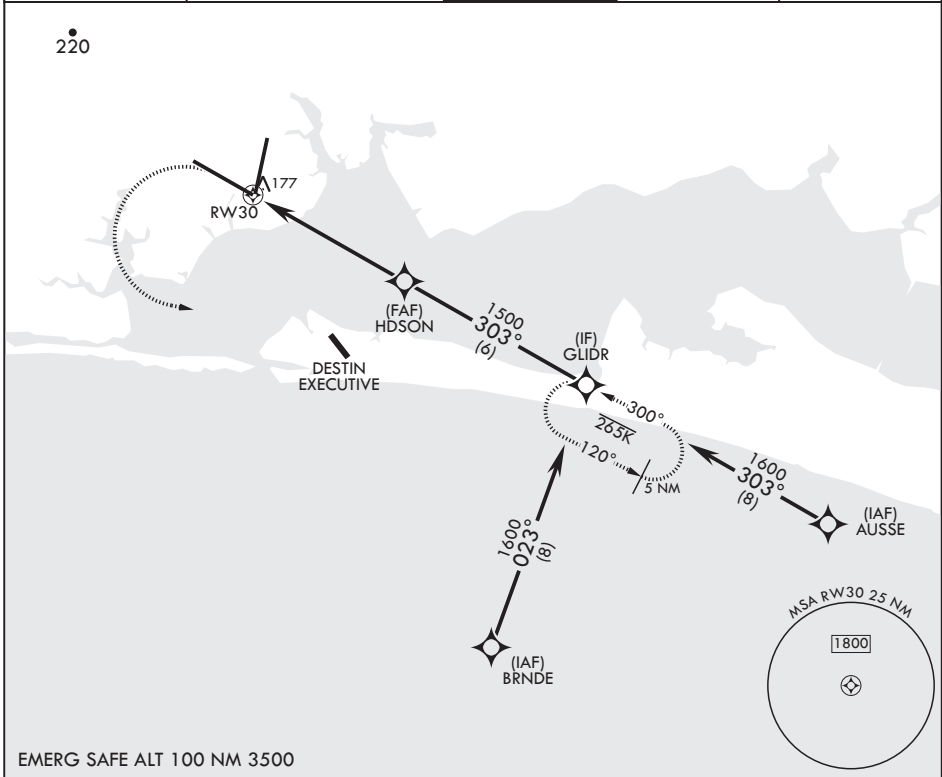
AL-436 (USAF)

EGLIN AFB DESTIN FORT WALTON BEACH (KVPS)

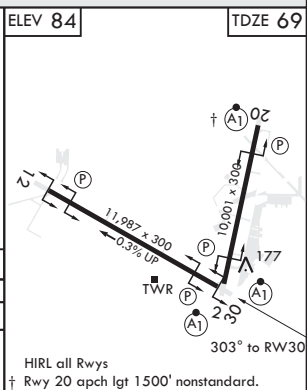
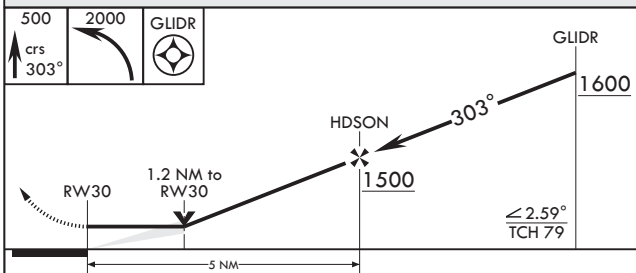
RNP APCH	ALS-F1
* When ALS inop, increase RVR to 55, vis to 1 mile.	

MISSED APPROACH: Climb to 500 then climbing left turn to 2000 direct GLIDR and hold.

ATIS* 134.625 273.5	APP CON/DEP CON 125.1 281.45 271°-089° 132.1 360.6 090°-270°	TOWER 118.2 353.65	GND CON 121.8 335.8	CLNC DEL 127.7 377.2
-------------------------------	----------------------------------------------------------------------------------	------------------------------	-------------------------------	--------------------------------



EMERG SAFE ALT 100 NM 3500



CATEGORY	A	B	C	D	E
	440/24	371 (400-½)	440/35	371	(400-¾)
LNVA MDA*	440-1½	496 (500-1)	680-1½	596 (600-1½)	680-2 596 (600-2)
CIRCLING	580-1	496 (500-1)	680-1½	596 (600-1½)	680-2 596 (600-2)

HIRL all Rwys
† Rwy 20 apch lgt 1500' nonstandard.

SE-3, 22 FEB 2024 to 21 MAR 2024

SE-3, 22 FEB 2024 to 21 MAR 2024