

VALPARAISO, FLORIDA

TACAN Z RWY 30

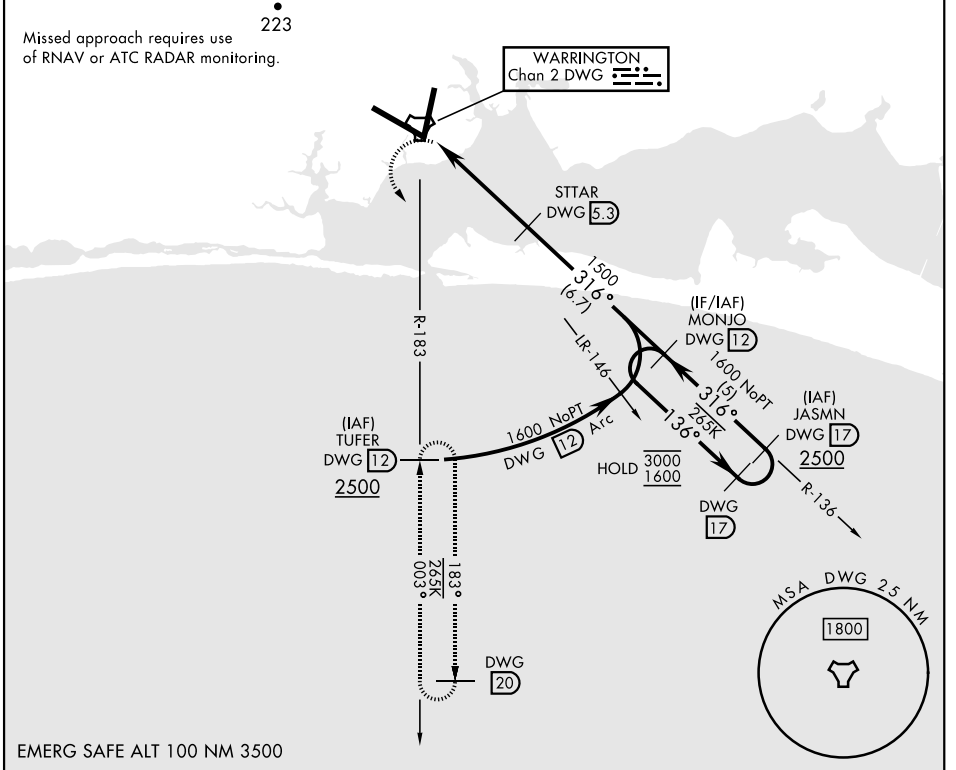
TACAN DWG Chan 2	APCH CRS 316°	Rwy Idg 11,987 TDZE 69 Arprt Elev 84
---------------------	------------------	--

AL-436 [USAF]

EGLIN AFB/DESTIN-FT WALTON BEACH (KVPS)

* When ALS inop, increase CAT AB RVR to 55 vis to 1 mile; CAT CDE vis to 1¼ miles.	ALSF-1 	MISSED APPROACH: Climbing left turn to 2200 direct DWG R-183/12 DME (TUFER) and hold.
---	------------	--

ATIS * 134.625 273.5	APP CON 125.1 281.45 271°-089° 132.1 360.6 090°-270°	TOWER 118.2 353.65	GND CON 121.8 335.8	CLNC DEL 127.7 377.2
-------------------------	--	-----------------------	------------------------	-------------------------



EMERG SAFE ALT 100 NM 3500

2200 DWG R-183	TUFER DWG 12	ELEV 84	TDZE 69		
CATEGORY	A	B	C	D	E
S-30 *	500/24 431 (500-½)		500/40 431 (500-¾)		
CIRCLING	580-1 496 (500-1)		680-1½ 596 (600-1½)	680-2 596 (600-2)	
				HIRL all rwys † Rwy 20 apch lgt 1500' nonstandard.	

VALPARAISO, FLORIDA
Orig 29DEC22

30°29'N-86°32'W

EGLIN AFB/DESTIN-FT WALTON BEACH (KVPS)

TACAN Z RWY 30

SE-3, 22 FEB 2024 to 21 MAR 2024

SE-3, 22 FEB 2024 to 21 MAR 2024