

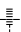
LOC I-INT 110.3	APP CRS 332°	Rwy Idg 6655
		TDZE 941
		Apt Elev 969

ILS or LOC RWY 33

SMITH REYNOLDS (INT)

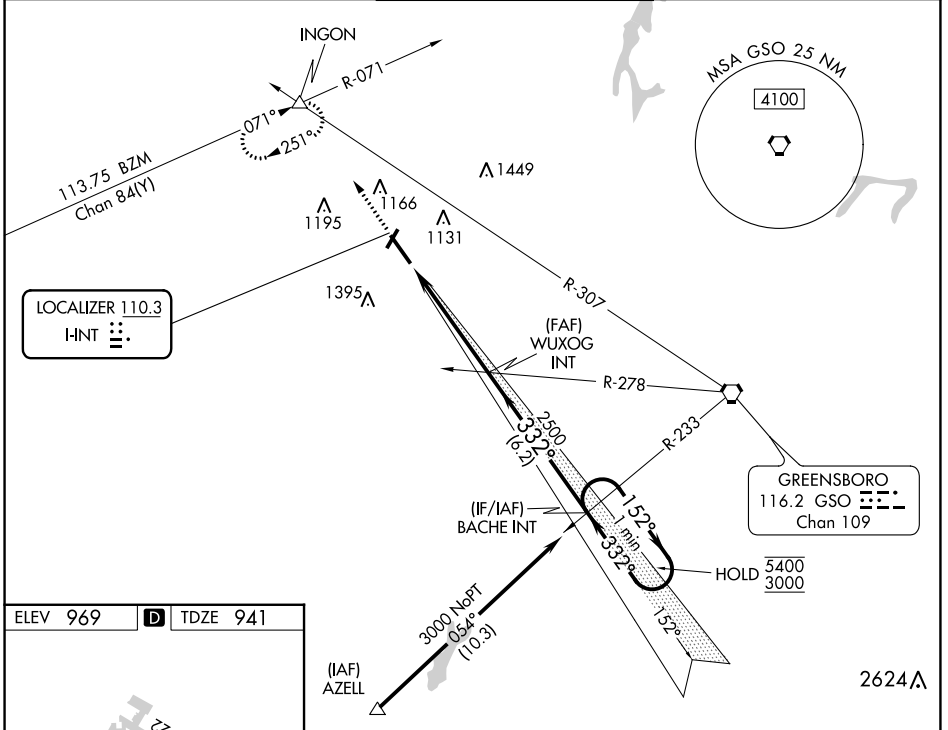
RNP APCH-GPS. From AZELL.
 RADAR required for Non-GPS equipped aircraft.

▽
▲ *RVR 1800 authorized with use of FD or AP or HUD to DA.

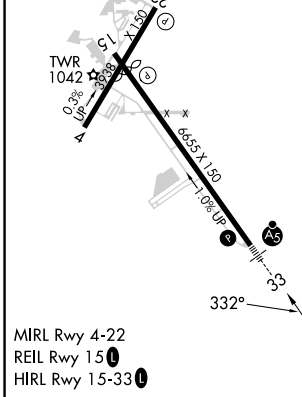
MALSR  **AS**

MISSED APPROACH: Climb to 1400 then climbing right turn to 3500 on heading 341° and GSO VORTAC R-307 to INGN INT and hold, continue climb-in-hold to 3500.

ATIS 121.3	GREENSBORO APP CON 124.35 269.225	WINSTON-SALEM TOWER ★ 123.75 (CTAF) 0 257.8	GND CON 128.25	UNICOM 122.95
----------------------	---	---	--------------------------	-------------------------



ELEV 969	D	TDZE 941
----------	----------	----------



1400	3500	INGN	One Minute Holding Pattern	
↑	hdg 341°	GSO R-307	WUXOG INT	BACHE INT
RW33		2500	2500	5400 3000
4.8 NM		6.2 NM		GS 3.00° TCH 57
CATEGORY	A	B	C	D
S-ILS 33*	1141/24		200 (200-1/2)	
S-LOC 33	1400/24	459 (500-1/2)	1400/45	459 (500-7/8)
CIRCLING	1480-1 511 (600-1)	1580-1 611 (700-1)	1700-2 731 (800-2)	1760-2 1/2 791 (800-2 1/2)

SE-2, 22 FEB 2024 to 21 MAR 2024

SE-2, 22 FEB 2024 to 21 MAR 2024