


WAAS CH 82011 W33A	APP CRS 332°	Rwy Idg TDZE 941 Apt Elev 969
--	------------------------	---

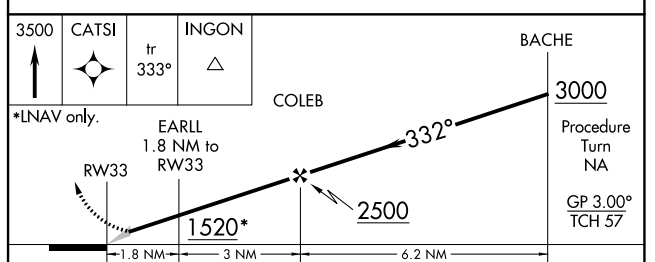
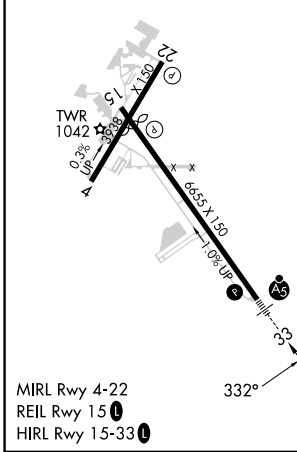
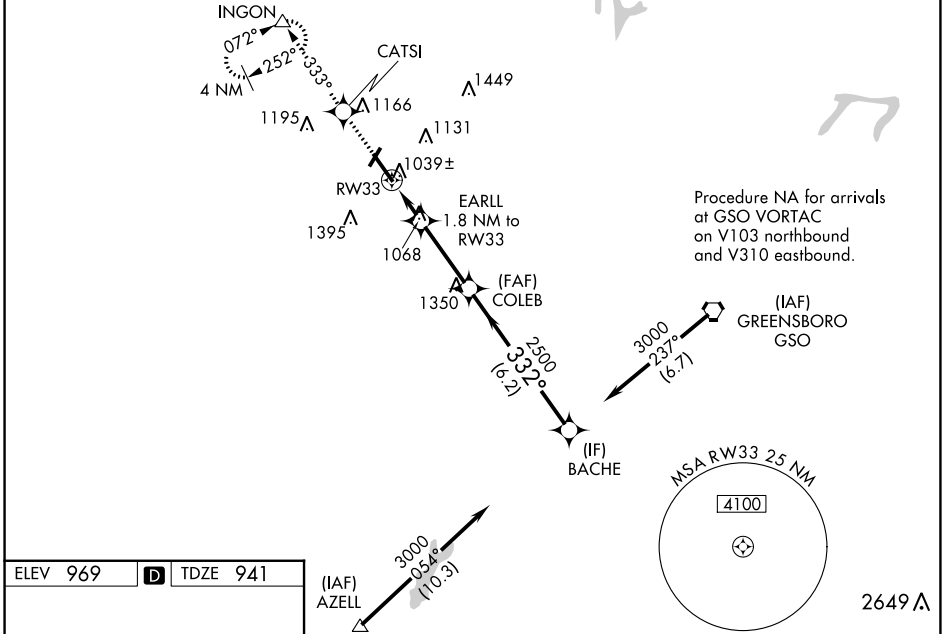
RNAV (GPS) RWY 33

SMITH REYNOLDS (INT)

⚠ For inoperative MALSR, when using Piedmont Triad Intl altimeter setting, increase LPV all Cats visibility to 1 mile. Baro-VNAV NA when using Piedmont Triad Intl altimeter setting. For uncompensated Baro-VNAV systems, LNAV/VNAV NA below -1.6°C (4°F) or above 47°C (116°F). DME/DME RNP-0.3 NA. When local altimeter setting not received, use Piedmont Triad Intl altimeter setting; increase LPV DA to 1180 feet, LNAV/VNAV DA to 1446 feet and visibility all Cats ¼ SM; increase all MDA 40 feet and Circling visibility Cats C/D ¼ SM. ** RVR 1800 authorized with use of FD or AP or HUD to DA, NA when using Piedmont Triad Intl altimeter setting. Circling Rwy 4, 22 NA at night.

MALSR
 **AS**
MISSED APPROACH:
 Climb to 3500 direct CATSI and on 333° track to INGON and hold, continue climb-in-hold to 3500.

ATIS 121.3	GREENSBORO APP CON 124.35 269.225	WINSTON-SALEM TOWER ★ 123.75 (CTAF) 0 257.8	GND CON 128.25	UNICOM 122.95
----------------------	---	---	--------------------------	-------------------------



CATEGORY	A	B	C	D
LPV DA**	1141/24 200 (200-½)			
LNAV/VNAV DA	1407/60 466 (500-1¼)			
LNAV MDA	1380/24	439 (500-½)	1380/40 439 (500-¾)	1380/50 439 (500-1)
CIRCLING	1480-1 511 (600-1)	1580-1 611 (700-1)	1700-2 731 (800-2)	1760-2½ 791 (800-2½)

SE-2, 22 FEB 2024 to 21 MAR 2024

SE-2, 22 FEB 2024 to 21 MAR 2024