

LOC/DME I-FMN <b>111.9</b> Chan 56	APP CRS <b>256°</b>	Rwy Idg TDZE Apt Elev	<b>6248</b> <b>5507</b> <b>5507</b>
--	------------------------	-----------------------------	---

# ILS or LOC RWY 25

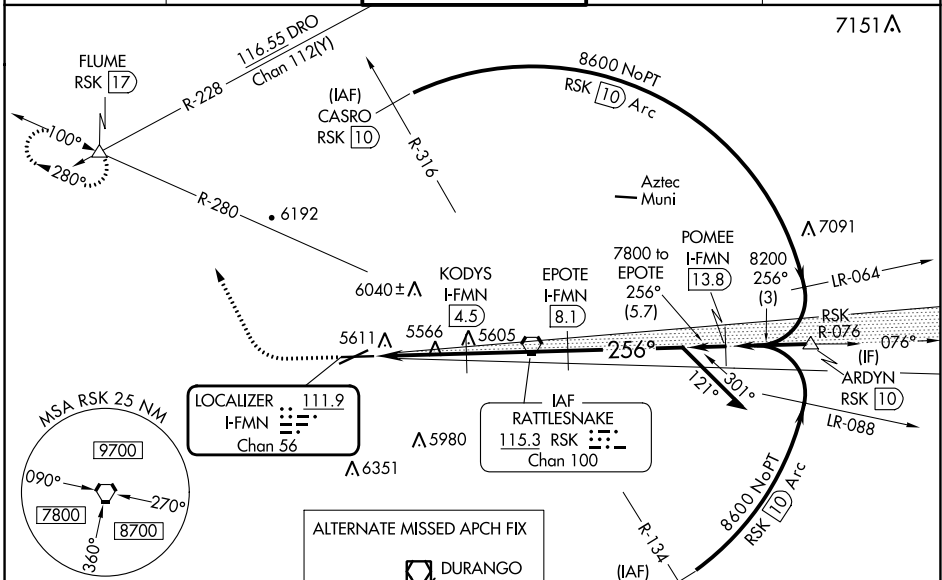
FOUR CORNERS RGNL (FMN)

**DME required.**

**VDP** N/A with Durango altimeter setting. Circling N/A for Cat D southeast of Rwy 5 and south of Rwy 25. When local altimeter setting not received, use Durango altimeter setting and increase S-ILS 25 DA to 5950 feet and all visibilities  $\frac{1}{2}$  SM; increase all MDAs 260 feet and S-LOC 25 visibility Cat C/D  $\frac{3}{4}$  SM, and Circling visibility Cat B  $\frac{1}{4}$  SM and Cat C  $\frac{1}{2}$  SM.

**MISSED APPROACH:** Climb to 6100 then climbing right turn to 9000 on heading 321° and on RSK VORTAC R-280 to FLUME INT and hold, continue climb-in-hold to 9000.

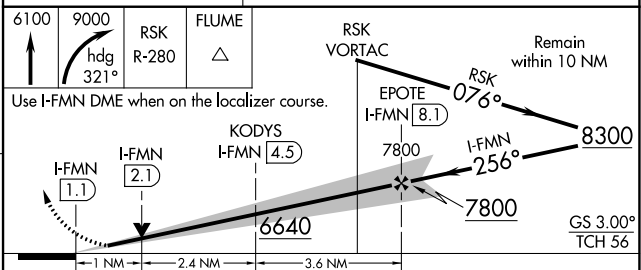
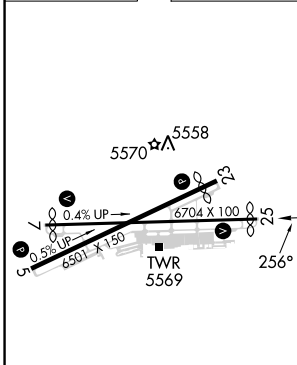
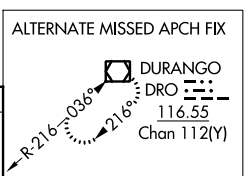
ATIS <b>127.15</b>	DENVER CENTER <b>118.575 348.7</b>	FARMINGTON TOWER* <b>118.9</b> (CTAF) <b>257.8</b>	GND CON <b>121.7</b>	UNICOM <b>122.95</b>
-----------------------	---------------------------------------	---	-------------------------	-------------------------



SW-1, 22 FEB 2024 to 21 MAR 2024

SW-1, 22 FEB 2024 to 21 MAR 2024

ELEV 5507	<b>D</b>	TDZE 5507
-----------	----------	-----------



REIL Rws 23 and 25	MIRL Rws 5-23 and 7-25				
FAF to MAP 7 NM					
Knots	60	90	120	150	180
Min:Sec	7:00	4:40	3:30	2:48	2:20
<b>CIRCLING</b>	6020-1 513 (600-1)	6140-1 633 (700-1)	6380-2½ 873 (900-2½)	6400-3 893 (900-3)	