

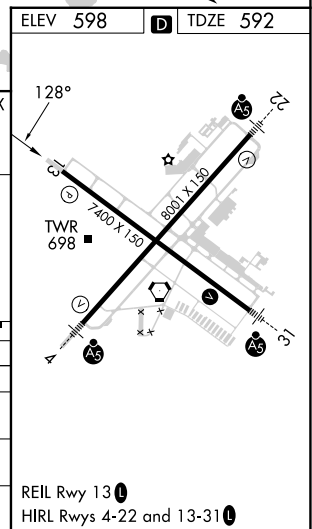
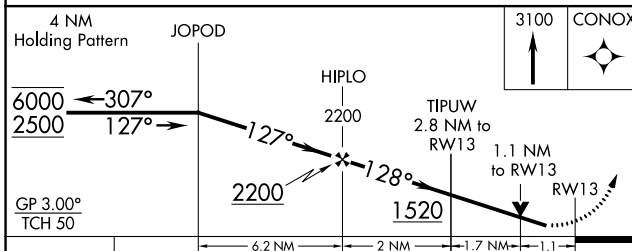
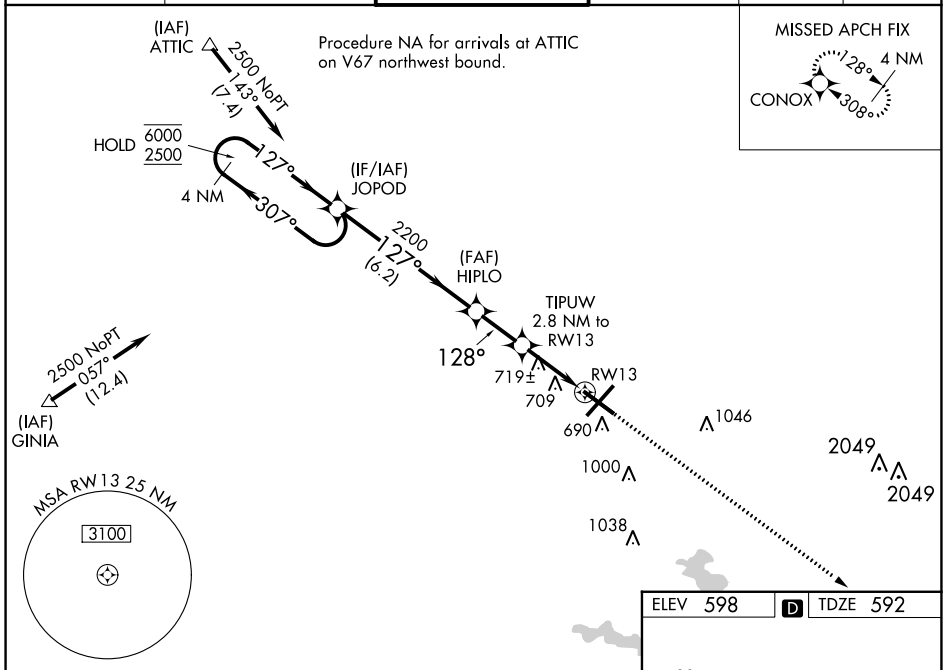
WAAS CH 99616 W13A	APP CRS 128°	Rwy Idg TDZE Apt Elev	7217 592 598
--	------------------------	-----------------------------	---

RNAV (GPS) RWY 13

ABRAHAM LINCOLN CAPITAL (SPI)

RNP APCH - GPS.		<p>Baro-VNAV and VDP NA when using Lincoln altimeter setting. For uncompensated Baro-VNAV systems, LNAV/VNAV NA below -16°C or above 54°C. When local altimeter setting not received, use Lincoln altimeter setting: increase LPV DA to 932 feet and all visibilities 1/8 SM; increase LNAV/VNAV DA to 1068 feet and all visibilities 1/4 SM; increase all MDAs 60 feet and LNAV visibility Cat C/D 1/4 SM, and Circling visibility Cat C/D 1/4 SM. Rwy 13 helicopter visibility reduction below 3/4 SM NA.</p>		<p>MISSED APPROACH: Climb to 3100 direct CONOX and hold.</p>	
-----------------	--	---	--	--	--

ATIS 127.65 270.1	SAINT LOUIS APP CON * 126.15 323.0	SPRINGFIELD TOWER * 121.3 (CTAF) 0 257.8	GND CON 121.9 348.6	CLNC DEL 121.7	UNICOM 122.95
-----------------------------	--	--	-------------------------------	--------------------------	-------------------------



CATEGORY	A	B	C	D
LPV DA		875-7/8	283 (300-7/8)	
LNAV/VNAV DA		1011-1 1/8	419 (500-1 1/8)	
LNAV MDA	980-1	388 (400-1)	980-1 1/8	388 (400-1 1/8)
CIRCLING	1040-1 442 (500-1)	1100-1 502 (600-1)	1360-2 1/4 762 (800-2 1/4)	1380-2 1/2 782 (800-2 1/2)

EC-3, 22 FEB 2024 to 21 MAR 2024

EC-3, 22 FEB 2024 to 21 MAR 2024