

# CLOUD ONE ARRIVAL

AL-545 (FAA)

PALM SPRINGS, CALIFORNIA

SOCAL APP CON  
 126.7 370.95  
 135.275 251.1  
 PSP ATIS  
 124.65  
 TRM ASOS  
 118.325  
 PALM SPRINGS TOWER\*  
 119.7 377.05  
 BERMUDA DUNES UNICOM  
 122.8  
 JACQUELINE COCHRAN UNICOM  
 123.0

GOFFS  
 114.4 GFS  
 Chan 91

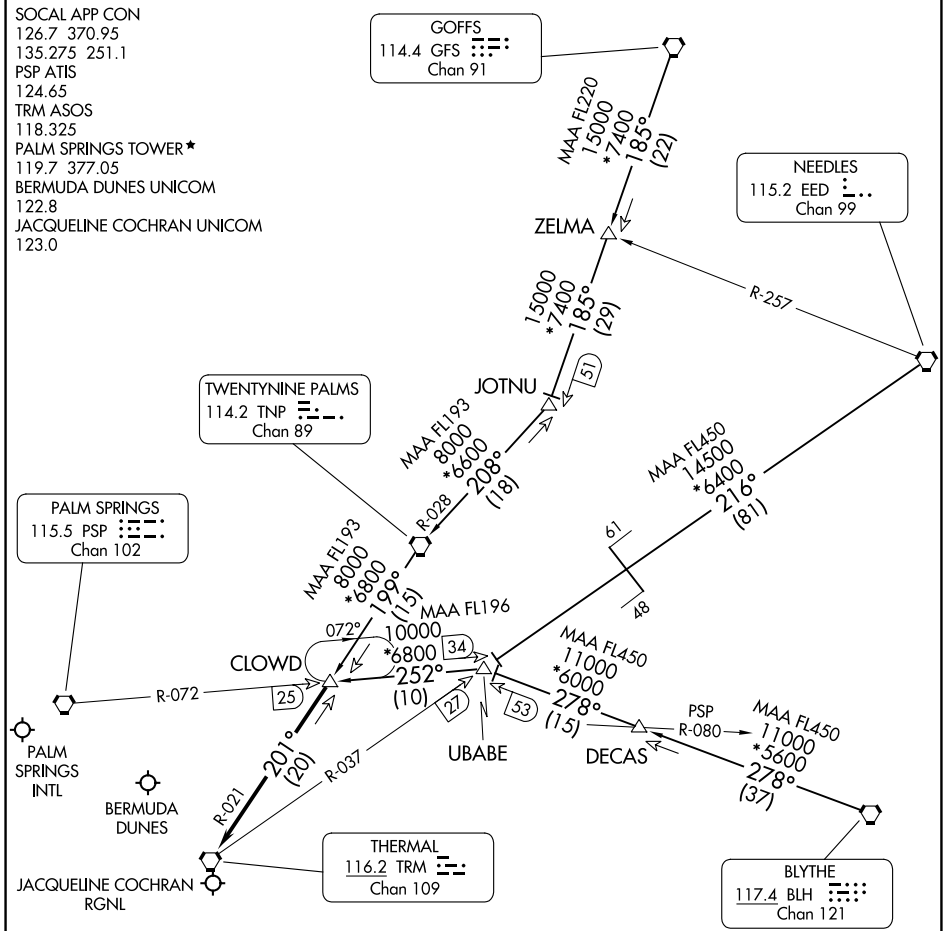
NEEDLES  
 115.2 EED  
 Chan 99

TWENTYNINE PALMS  
 114.2 TNP  
 Chan 89

PALM SPRINGS  
 115.5 PSP  
 Chan 102

THERMAL  
 116.2 TRM  
 Chan 109

BLYTHE  
 117.4 BLH  
 Chan 121



SW-3, 22 FEB 2024 to 21 MAR 2024

SW-3, 22 FEB 2024 to 21 MAR 2024

NOTE: Chart not to scale.

NOTE: DME required.

## ARRIVAL ROUTE DESCRIPTION

**BLYTHE TRANSITION (BLH.CLOUD1):** From over BLH VORTAC on BLH R-278 and PSP R-072 to CLOUD DME. Thence. . .

**DECAS TRANSITION (DECAS.CLOUD1):** From over DECAS INT on BLH R-278 and PSP R-072 to CLOUD DME. Thence. . .

**GOFFS TRANSITION (GFS.CLOUD1):** From over GFS VORTAC on GFS R-185 and TNP R-028 to TNP VORTAC, then on TNP R-199 to CLOUD DME. Thence. . .

**NEEDLES TRANSITION (EED.CLOUD1):** From over EED VORTAC on EED R-216 and TRM R-037 to UBABE DME, then on PSP R-072 to CLOUD DME. Thence. . .

. . . From over CLOUD DME on TRM R-021 to TRM VORTAC. Expect RADAR vectors to final approach course.

# CLOUD ONE ARRIVAL

PALM SPRINGS, CALIFORNIA