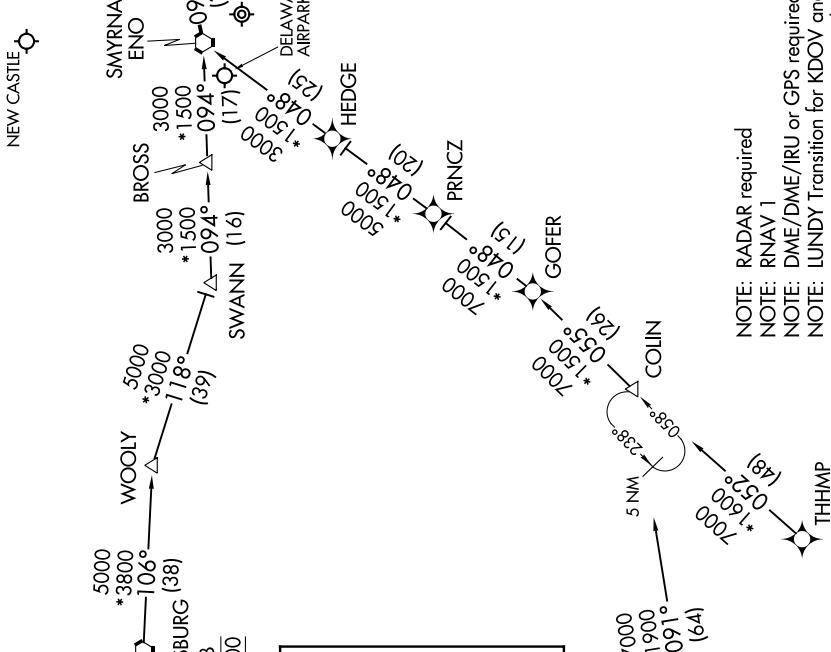
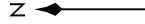
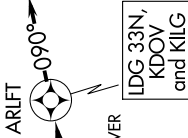


ARLFT TWO ARRIVAL (RNAV)

DOVER/CHESWOLD, DELAWARE

DOVER APP CON
132.425 257.875
33N AWOS-3
IIG ATIS
120.125
123.95
KDOV D-ATIS
127.825 273.5

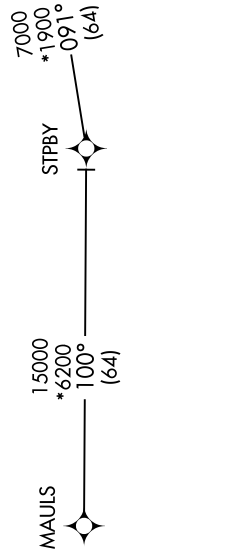


- NOTE: RADAR required
- NOTE: RNAV 1
- NOTE: DME/DME/IRU or GPS required
- NOTE: LUNDA Transition for KDOV and 33N arrivals only
- NOTE: BUBBI Transition ATC assigned only

NE-3, 22 FEB 2024 to 21 MAR 2024

BUBBI TRANSITION (BUBBI.ARLFT2)
LUNDA TRANSITION (LUNDA.ARLFT2)
MAULS TRANSITION (MAULS.ARLFT2)
THHMP TRANSITION (THHMP.ARLFT2)

LANDING KDOV/33N/KILG: From ENO VORTAC on track 090° to ARLFT, then on heading 090° or as assigned by ATC. Expect RADAR vectors to final approach course.



NOTE: Chart not to scale.

NE-3, 22 FEB 2024 to 21 MAR 2024

ARLFT TWO ARRIVAL (RNAV)

DOVER/CHESWOLD, DELAWARE