

PEORIA, ILLINOIS

# HI-ILS or LOC RWY 31

LOC I-PIA <b>109.9</b>	APCH CRS <b>309°</b>	Rwy ldg TDZE Arprt Elev <b>10,104</b> <b>650</b> <b>661</b>
---------------------------	-------------------------	--

AL-597 [USAF]

GENERAL DOWNING - PEORIA INTL (KPJA)

ADF required for LOC only.

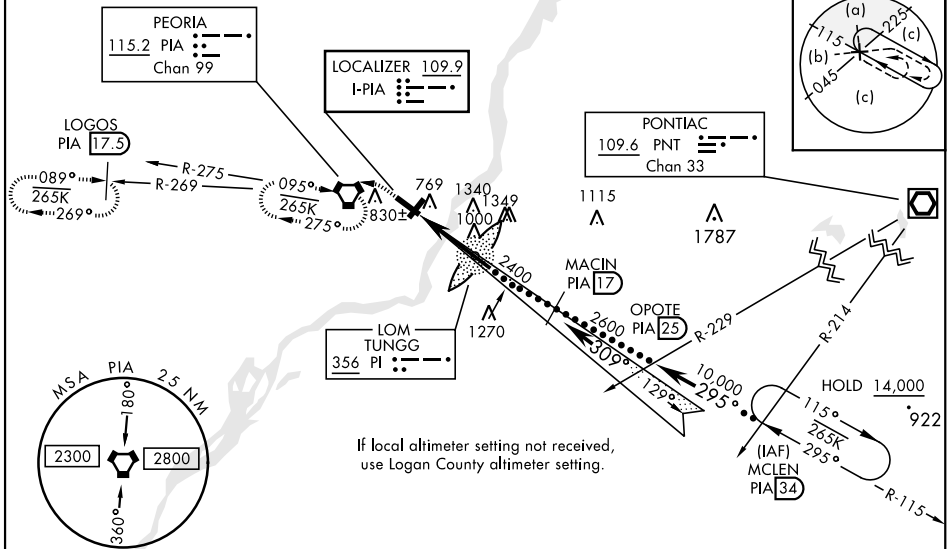
- \* When ALS inop, increase RVR to 40.
- \*\* When ALS inop, increase vis to 1 $\frac{1}{8}$  miles.
- \*\*\* When ALS inop, increase vis to 1 $\frac{1}{4}$  miles.



MISSED APPROACH: Climb to 2000 direct PIA VORTAC and hold. (TACAN aircraft: continue via PIA R-269 to LOGOS/PIA 17.5 DME and hold west, right turn 089° inbound).

ATIS <b>126.1 282.2</b>	SAINT LOUIS APP CON <b>125.8 269.2</b>	PEORIA TOWER <b>124.0 353.85</b>	GND CON <b>121.85 348.6</b>
----------------------------	---	-------------------------------------	--------------------------------

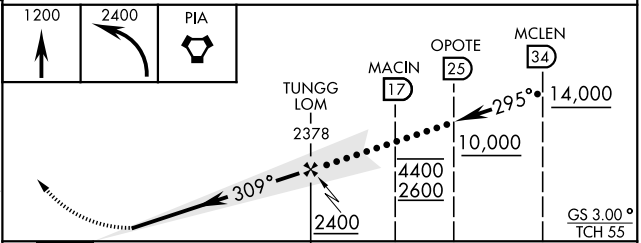
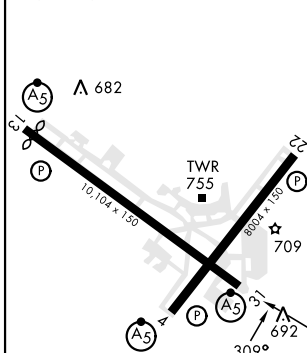
\*\*\*\* Circling Rwy 13-31 NA at night.



EMERG SAFE ALT 100 NM 3300

ELEV 661	D	TDZE 650
----------	---	----------

Rwy 4 ldg 7826'  
Rwy 13 ldg 9604'



CATEGORY	C	D	E
S-ILS 31*	850/24	200 (200-1/2)	
S-LOC 31**	1200/60	550 (600-1/4)	
**** CIRCLING	1200-1 $\frac{1}{8}$ 539 (600-1 $\frac{1}{8}$ )	1400-2 $\frac{1}{4}$ 739 (800-2 $\frac{1}{4}$ )	1680-3 1019 (1100-3)
LOGAN COUNTY ALTIMETER MINIMA			
S-ILS 31*	939/24	289 (300-1/2)	
S-LOC 31***	1300-1 $\frac{1}{8}$	650 (700-1 $\frac{1}{8}$ )	
**** CIRCLING	1300-1 $\frac{1}{8}$ 639 (700-1 $\frac{1}{8}$ )	1460-2 $\frac{3}{4}$ 799 (800-2 $\frac{3}{4}$ )	1720-3 1059 (1100-3)

PEORIA, ILLINOIS

40°40'N-89°42'W

GENERAL DOWNING - PEORIA INTL (KPJA)

Amdt 7D 22APR21

# HI-ILS or LOC RWY 31

EC-3, 22 FEB 2024 to 21 MAR 2024

EC-3, 22 FEB 2024 to 21 MAR 2024