


LOC/DME I-RNX <b>110.55</b> Chan 42 (Y)	APP CRS <b>041°</b>	Rwy Idg TDZE Apt Elev	<b>7826</b> <b>652</b> <b>661</b>
---	------------------------	-----------------------------	---

# ILS RWY 4 (SA CAT I & II)

GENERAL DOWNING-PEORIA INTL(PIA)

DME required.

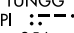
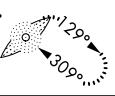
**SA CAT I:** Requires specific OPSPEC, MSPEC, or LOA approval and use of HUD to DH. **SA CAT II:** Reduced Lighting: requires specific OPSPEC, MSPEC, or LOA approval and use of Autoland or HUD to touchdown.

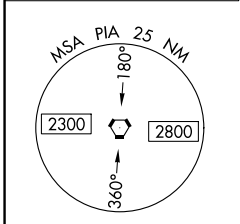
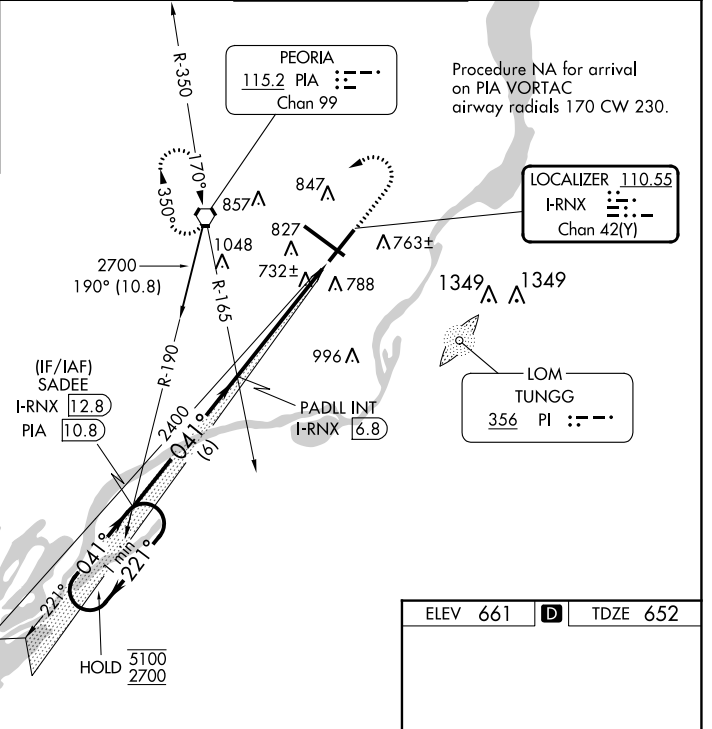
MALSR 

MISSED APPROACH: Climb to 1500 then climbing left turn to 2700 direct PIA VORTAC and hold, continue climb-in-hold to 2700.

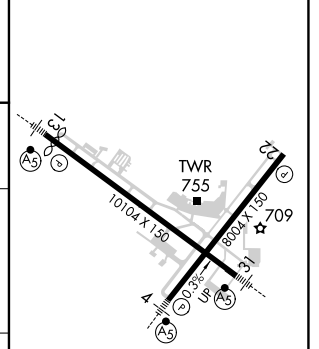
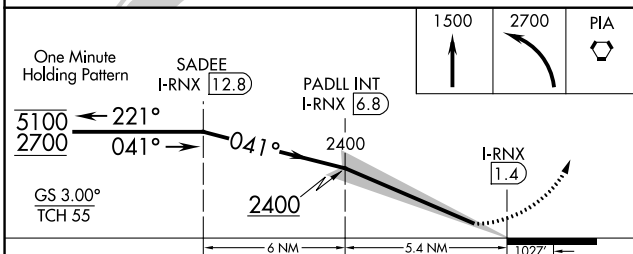
ATIS <b>126.1 282.2</b>	SAINT LOUIS APP CON <b>125.8 269.2</b>	PEORIA TOWER <b>124.0 353.85</b>	GND CON <b>121.85 348.6</b>
----------------------------	---	-------------------------------------	--------------------------------

ALTERNATE MISSED APCH FIX

TUNGG  
PI   
356 



ELEV 661	<b>D</b>	TDZE 652
----------	----------	----------



CATEGORY	A	B	C	D
S-ILS 4		SA CAT I RA 171/14	150 DA 802	
S-ILS 4		SA CAT II RA 115/12	100 DA 752	

**SA CATEGORY I & II ILS - SPECIAL AIRCREW & AIRCRAFT CERTIFICATION REQUIRED**



EC-3, 22 FEB 2024 to 21 MAR 2024

EC-3, 22 FEB 2024 to 21 MAR 2024