

WAAS CH 60922 W13A	APP CRS 128°	Rwy Idg TDZE Apt Elev	9604 632 661
--	------------------------	-----------------------------	---

RNAV (GPS) RWY 13

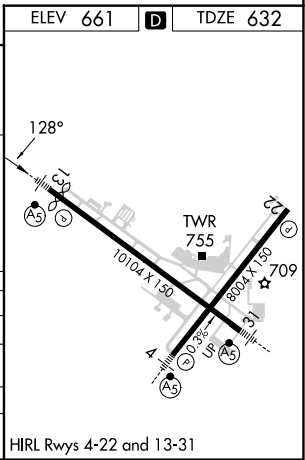
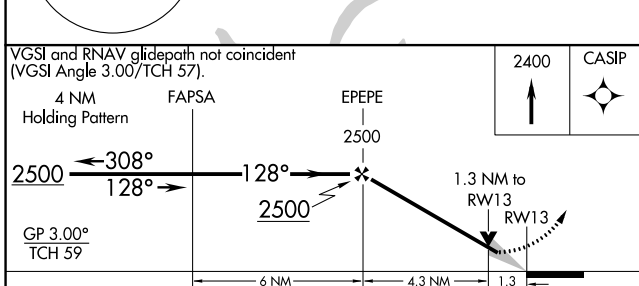
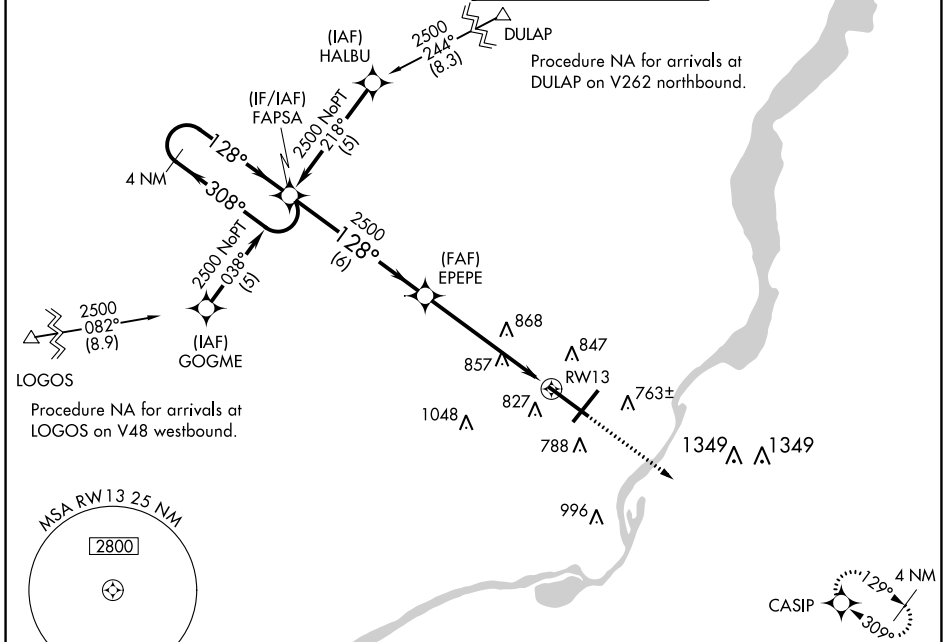
GENERAL DOWNING-PEORIA INTL (PIA)

RNP APCH - GPS.

For uncompensated Baro-VNAV systems, LNAV/VNAV NA below -19°C or above 54°C. When local altimeter setting not received, use Lincoln altimeter setting increase LPV DA to 1110 feet and all visibilities ¼ SM. Increase LNAV/VNAV DA to 1168 feet and all visibilities ½ SM. Increase all MDAs 100 feet and LNAV visibility Cat C/D ¼ SM, and Circling visibility Cat C/D ½ SM. Baro-VNAV and VDP NA when using Lincoln altimeter setting. For inop ALS, increase LPV all Cats visibility to 1½ SM, LNAV Cat A/B visibility to 1 SM and Cat C/D visibility to 1½ SM. For inop ALS when using Lincoln altimeter setting, increase LPV visibility all Cats to 1½ SM and LNAV Cat A/B visibility to 1 SM.

MALSR
MISSED APPROACH: Climb to 2400 direct CASIP and hold.

ATIS 126.1 282.2	SAINT LOUIS APP CON 125.8 269.2	PEORIA TOWER 124.0 353.85	GND CON 121.85 348.6
----------------------------	---	-------------------------------------	--------------------------------



CATEGORY	A	B	C	D
LPV DA		1025-¾	389 (400-¾)	
LNAV/VNAV DA		1083-1	447 (500-1)	
LNAV MDA	1120-½	484 (500-½)	1120-1	484 (500-1)
C CIRCLING	1160-1	499 (500-1)	1180-1½ 519 (600-1½)	1400-2¼ 739 (800-2¼)

EC-3, 22 FEB 2024 to 21 MAR 2024

EC-3, 22 FEB 2024 to 21 MAR 2024