

APP CRS	Rwy Idg	<b>8004</b>
<b>221°</b>	TDZE	<b>661</b>
	Apt Elev	<b>661</b>

# RNAV (GPS) RWY 22

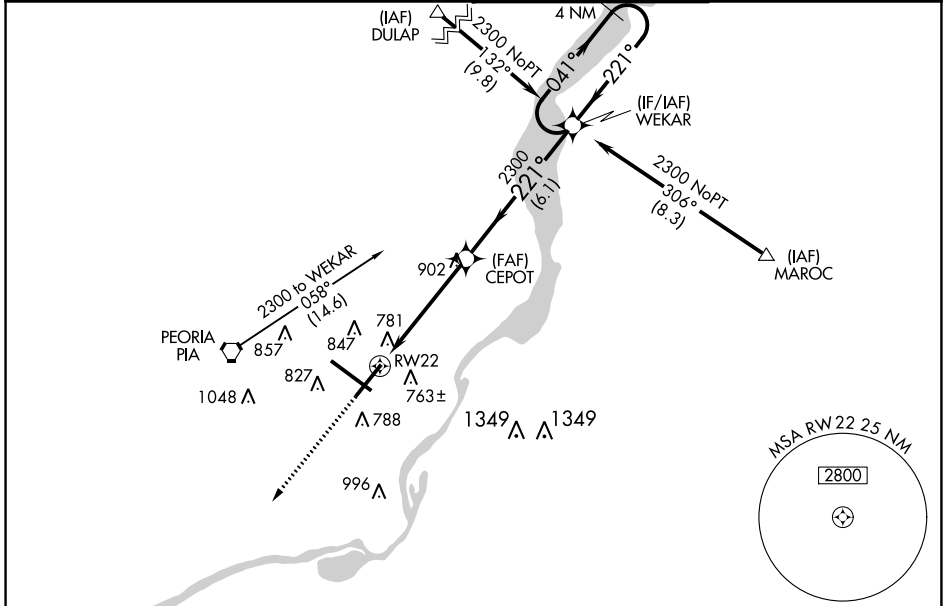
GENERAL DOWNING-PEORIA INTL (PIA)

RNP APCH.

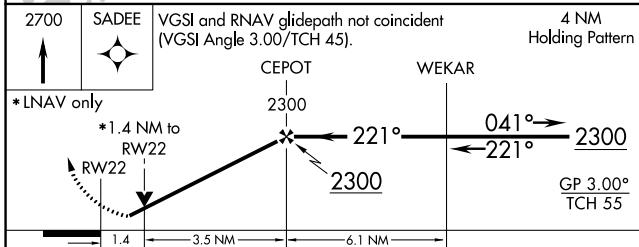
**⚠** For uncompensated Baro-VNAV systems, LNAV/VNAV NA below -19°C or above 54°C. When local altimeter setting not received, use Logan County altimeter setting and increase all DA 89 feet and all MDA 100 feet, increase LNAV/VNAV DA all Cats visibility to 1½ mile, LNAV MDA Cat C and D visibility to ¾ mile, and Circling Cat C ½ mile and Cat D ½ mile. Baro-VNAV and VDP NA when using Logan County altimeter setting. Rwy 22 helicopter visibility reduction below ¾ SM NA. Circling Rwy 13, 31 NA at night.

MISSED APPROACH: Climb to 2700 direct SADEE and hold.

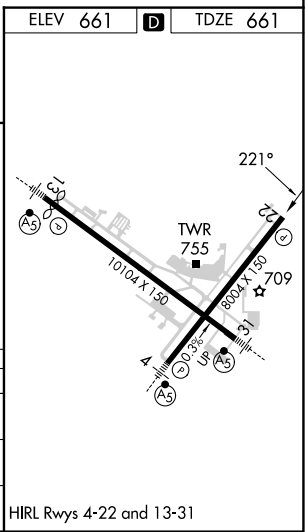
ATIS	SAINT LOUIS APP CON	PEORIA TOWER	GND CON
<b>126.1 282.2</b>	<b>125.8 269.2</b>	<b>124.0 353.85</b>	<b>121.85 348.6</b>



2700	SADEE	VGSI and RNAV glidepath not coincident (VGSI Angle 3.00/TCH 45).	4 NM Holding Pattern



CATEGORY	A	B	C	D
LNAV/VNAV DA	1093-1¾ 432 (500-1¾)			
LNAV MDA	1160-1 499 (500-1)	1160-1¾ 499 (500-1¾)		
<b>C</b> CIRCLING	1160-1 499 (500-1)	1180-1½ 519 (600-1½)	1400-2¼ 739 (800-2¼)	



EC-3, 22 FEB 2024 to 21 MAR 2024

EC-3, 22 FEB 2024 to 21 MAR 2024