


WAAS CH 77509 W31A	APP CRS 309°	Rwy Idg 10104 TDZE 650 Apt Elev 661
--	------------------------	--

RNAV (GPS) RWY 31

GENERAL DOWNING-PEORIA INTL (PIA)

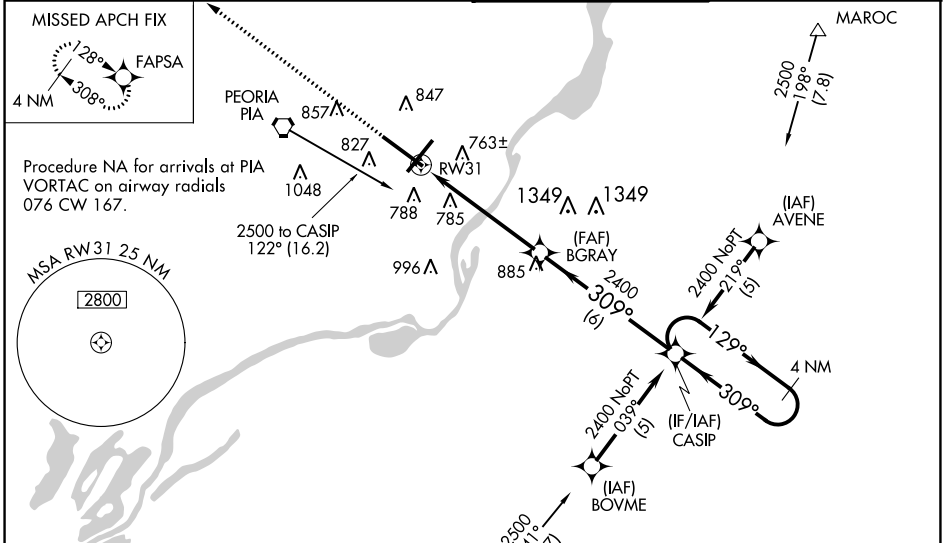
RNP APCH - GPS

⚠ For uncompensated Baro-VNAV systems, LNAV/VNAV NA below -23°C or above 54°C. For inop MALS, increase LPV all Cats visibility to 4500. When local altimeter setting not received, use Lincoln altimeter setting increase LPV DA 1028 feet; increase LNAV/VNAV DA to 1211 feet; increase all MDAs 100 feet, and Circling visibility Cat C/D ½ SM. Baro-VNAV and VDP NA when using Lincoln altimeter setting. For inop ALS, increase LPV visibility all Cats to RVR 4500, LNAV/VNAV visibility all Cats to 1% SM, LNAV visibility Cat A/B to RVR 5500 and Cat C/D visibility to 1% SM. For inop ALS when using Lincoln altimeter setting, increase LPV visibility all Cats to RVR 5500, LNAV/VNAV visibility all Cats to 1% SM, and LNAV visibility Cat A/B to RVR 5500 and Cat C/D to 1% SM.

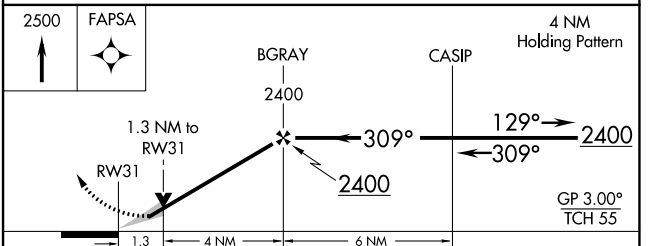
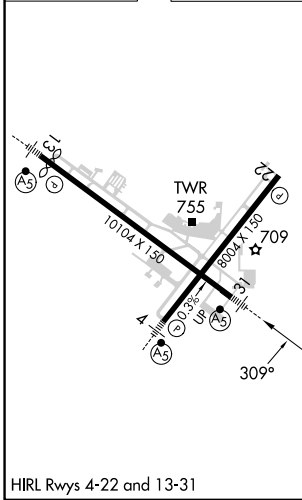
MALS 

MISSED APPROACH: Climb to 2500 direct FAPSA and hold.

ATIS 126.1 282.2	SAINT LOUIS APP CON 125.8 269.2	PEORIA TOWER 124.0 353.85	GND CON 121.85 348.6
----------------------------	---	-------------------------------------	--------------------------------



ELEV 661	D	TDZE 650
----------	----------	----------



CATEGORY	A	B	C	D
LPV DA		939/24	289 (300-½)	
LNAV/VNAV DA		1122/60	472 (500-1¼)	
LNAV MDA	1040/24	470 (500-½)	1040/50	470 (500-1)
C CIRCLING	1160-1	499 (500-1)	1180-1½ 519 (600-1½)	1400-2¼ 739 (800-2¼)

EC-3, 22 FEB 2024 to 21 MAR 2024

EC-3, 22 FEB 2024 to 21 MAR 2024