

HI-ILS Y or LOC Y RWY 26

LOC I-FSM 111.3	APCH CRS 260°	Rwy ldg TDZE Arprt Elev 9318 448 469	[USAF]	FORT SMITH RGNL (KF5M)
DME required			MALSR A5	MISSED APPROACH: Climb to 1400 then climbing left turn to 4000 on heading 224° and FSM VORTAC R-232 to SPIRO/FSM (15 DME) and hold. Continue climb in hold to 4000.
* When ALS inop, increase CAT E RVR to 40. ** When ALS inop, increase CAT CDE vis to 1½ miles. ▲ NA when control tower closed.				

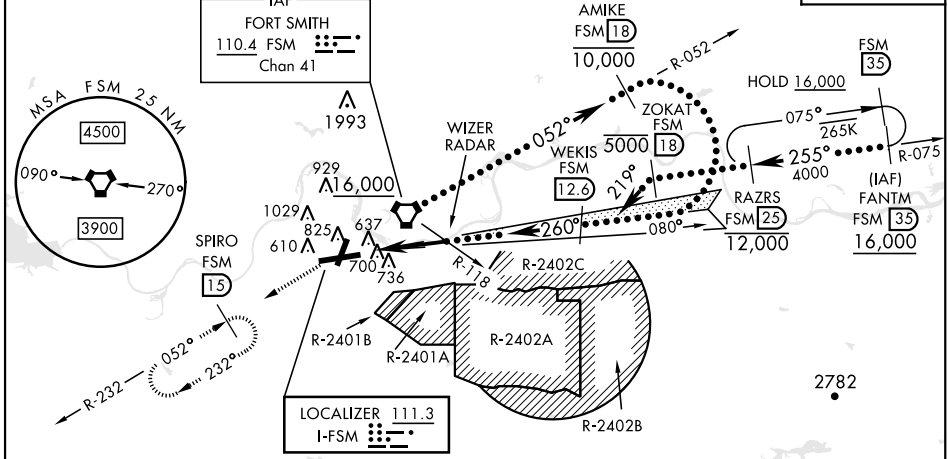
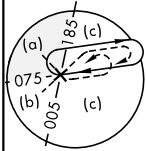
ATIS 124.775	RAZORBACK APP CON * 120.9 343.75	TOWER * 118.3 (CTAF) 0 323.175	GND CON 121.9 275.8	CLNC DEL 133.85 278.3
------------------------	--	--	-------------------------------	---------------------------------

*** Circling not authorized for CAT E NW of Rwy 8 and Rwy 20. Procedure not authorized for arrivals on FSM VORTAC Radials 359 CW 105.

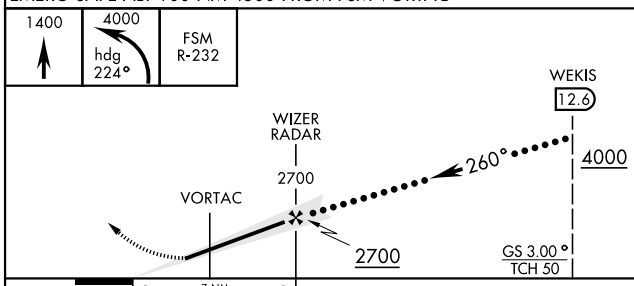
Circling not authorized for CAT E when R-2401B active.

Circling Rwy 20 and Rwy 26 not authorized at night.

RVR 1800 Authorized with use of FD or AP or HUD to DA.



EMERG SAFE ALT 100 NM 4500 FROM FSM VORTAC



ELEV 469	TDZE 448
618 A	
MIRL Rwy 2-20 HIRL Rwy 8-26	
FAF to MAP 7 NM	
Knots	120 140 160 180 200
Min:Sec	3:30 3:00 2:38 2:20 2:06

CATEGORY	C	D	E
S-ILS 26 *	648/24	200	(200-½)
S-LOC 26 **	960-55	512	(600-1)
CIRCLING ***	1400-2¾ 931 (1000-2¾)	1400-3	931 (1000-3)

HI-ILS Y or LOC Y RWY 26

SC-1, 22 FEB 2024 to 21 MAR 2024

SC-1, 22 FEB 2024 to 21 MAR 2024