

HI-VOR Y or TACAN Y RWY 26

VORTAC FSM 110.4 Chan 41	APCH CRS 225°	Rwy Idg TDZE 448 Arpt Elev 469	9318
--	-------------------------	--	-------------

[USAF]

FORT SMITH RGNL (KF5M)

DME required



MISSED APPROACH: Climb to 4000 on FSM
VORTAC R-232 to SPIRO (FSM R-232/15 DME)
and hold, continue climb in hold to 4000.

* Circling not authorized for CAT E NW of Rwy 8
and Rwy 20.

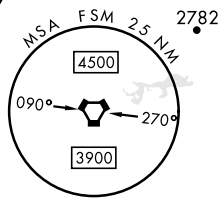
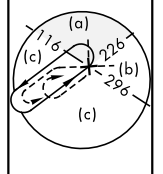
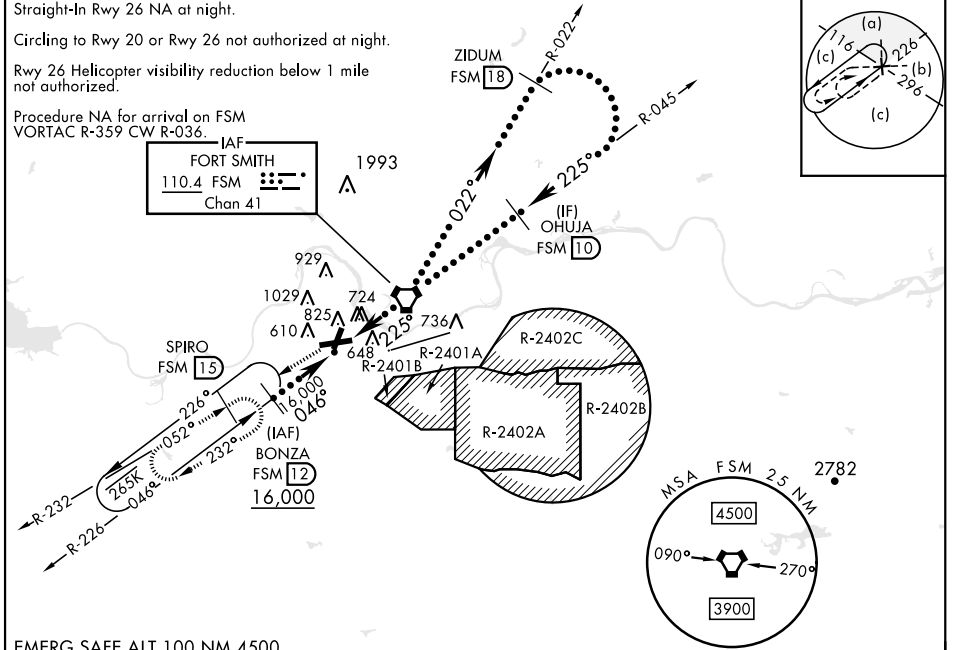
ATIS 124.775	RAZORBACK APP CON * 120.9 343.75	TOWER * 118.3 (CTAF) 323.175	GND CON 121.9 275.8	CLNC DEL 133.85 278.3
------------------------	--	--	-------------------------------	---------------------------------

Straight-In Rwy 26 NA at night.

Circling to Rwy 20 or Rwy 26 not authorized at night.

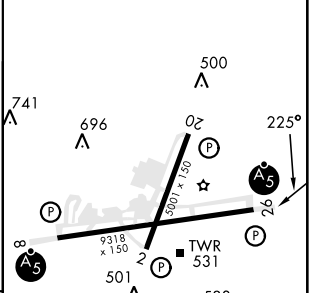
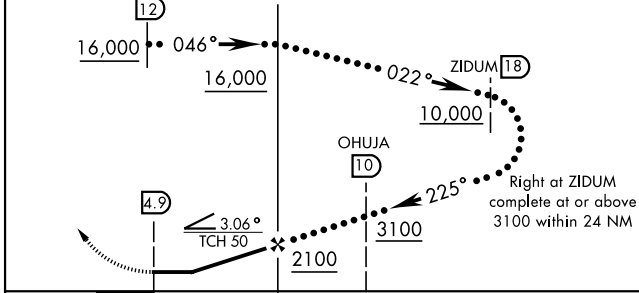
Rwy 26 Helicopter visibility reduction below 1 mile not authorized.

Procedure NA for arrival on FSM
VORTAC R-359 CW R-036.



EMERG SAFE ALT 100 NM 4500

4000 ↑ FSM R-232	SPIRO FSM 15	ELEV 469	TDZE 448
---------------------------	--------------------	-----------------	-----------------



CATEGORY	C	D	E
S-26	980-1½	532 (600-1½)	
CIRCLING *	1400-2¾ 931 (1000-2¾)	1400-3 931 (1000-3)	1400-3 931 (1000-3)

MIRL Rwy 2-20	1
HIRL Rwy 8-26	1

HI-VOR Y or TACAN Y RWY 26

SC-1, 22 FEB 2024 to 21 MAR 2024

SC-1, 22 FEB 2024 to 21 MAR 2024