

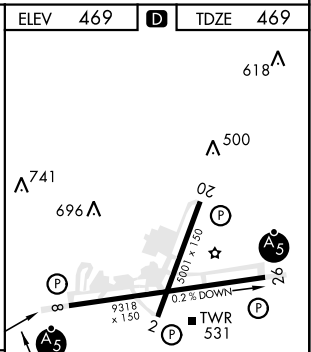
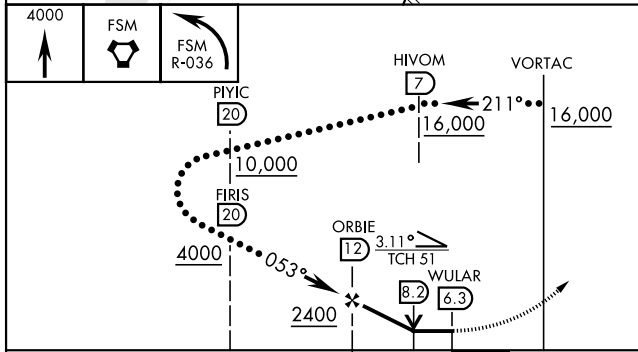
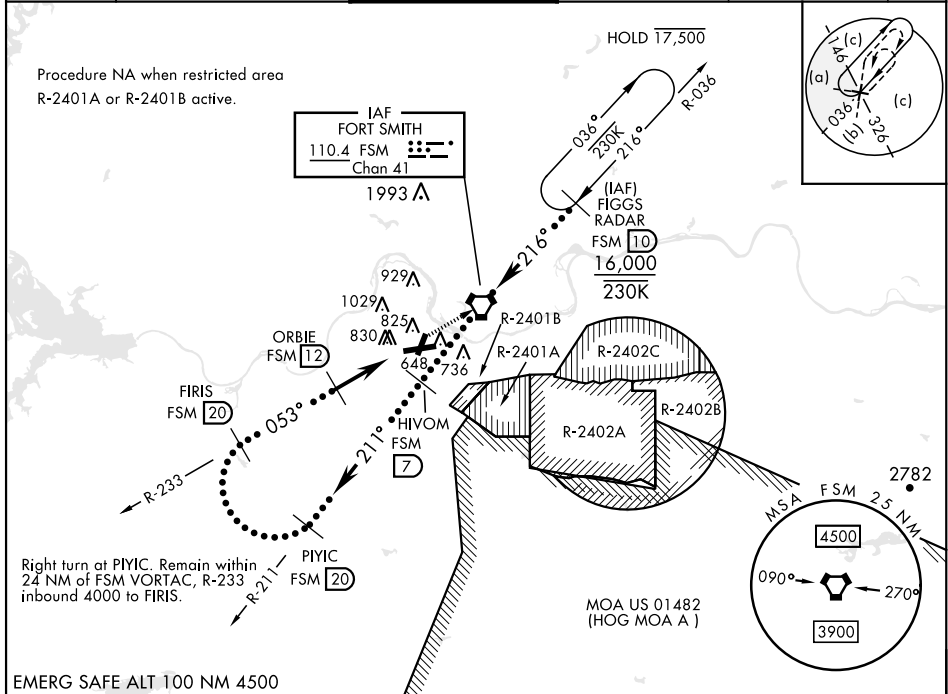
FORT SMITH, ARKANSAS

HI-VOR Y or TACAN Y RWY 8

VORTAC FSM 110.4 Chan 41	APCH CRS 053°	Rwy Idg TDZE 469 Arprt Elev 469	[USAF]	FORT SMITH RGNL (KF5M)
--	-------------------------	---	--------	------------------------

DME required	MALSR	MISSED APPROACH: Climb to 4000 direct FSM VORTAC and on R-036 to FIGGS (FSM R-036/10 DME) and hold.
--------------	-------	---

ATIS 124.775	RAZORBACK APP CON * 120.9 343.75	TOWER * 118.3 (CTAF) 323.175	GND CON 121.9 275.8	CLNC DEL 133.85 278.3	ASR
------------------------	--	--	-------------------------------	---------------------------------	-----



CATEGORY	C	D	E	MIRL Rwy 2-20 HIRL Rwy 8-26
S-8	1120-1 1/8	651 (700-1 1/8)		
CIRCLING*	1400-2 3/4 931 (1000-2 3/4)	1400-3	931 (1000-3)	

FORT SMITH, ARKANSAS 35°20'N-94°22'W FORT SMITH RGNL (KF5M)

HI-VOR Y or TACAN Y RWY 8

SC-1, 22 FEB 2024 to 21 MAR 2024

SC-1, 22 FEB 2024 to 21 MAR 2024