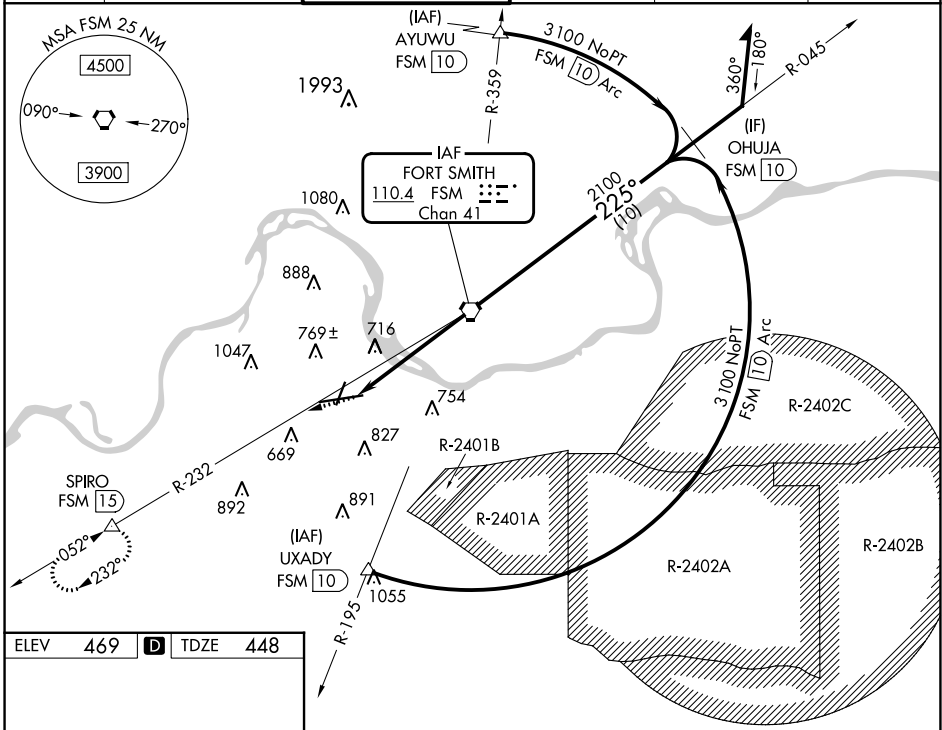


VORTAC FSM	APP CRS	Rwy Idg	9318
110.4	225°	TDZE	448
Chan 41		Apt Elev	469

VOR Z or TACAN Z RWY 26

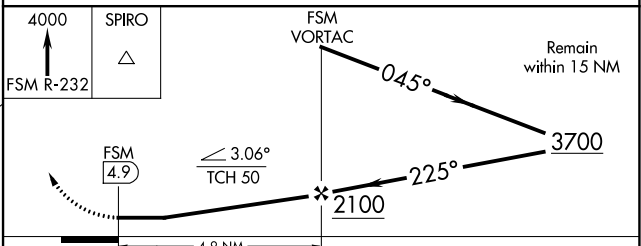
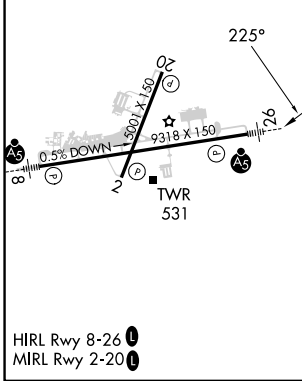
FORT SMITH RGNL (FSM)

DME required.		MALSR		MISSED APPROACH: Climb to 4000 on FSM VORTAC R-232 to SPIRO/15 DME and hold, continue climb-in-hold to 4000.	
Rwy 26 helicopter visibility reduction below RVR 5000 NA. Inop table does not apply. Circling Cat E NA when R-2401B active. Arc segment R-195 CCW: NA when restricted areas R-2401 and R-2402 in effect. Circling NA for Cat E northwest of Rwy 8 and Rwy 20. Straight-in Rwy 26 NA at night, Circling Rwy 20, 26 NA at night.		ATIS 124.775		RAZORBACK APP CON* 120.9 343.75	
FORT SMITH TOWER* 118.3 (CTAF) 323.175		GND CON 121.9 275.8		CLNC DEL 133.85 278.3	
				UNICOM 122.95	



ELEV	469	D	TDZE	448
------	------------	----------	------	------------

Procedure NA for arrival on FSM VORTAC airway radials 036 CW 090.



CATEGORY	A	B	C	D	E
S-26	980/55	532 (600-1)	980-1½ 532 (600-1½)		
C CIRCLING	1140-1	671 (700-1)	1400-2¾ 931 (1000-2¾)	1400-3 931 (1000-3)	

SC-1, 22 FEB 2024 to 21 MAR 2024

SC-1, 22 FEB 2024 to 21 MAR 2024