

WAAS CH 87014 W32A	APP CRS 321°	Rwy Idg 6007 TDZE 63 Apt Elev 64
--	------------------------	---

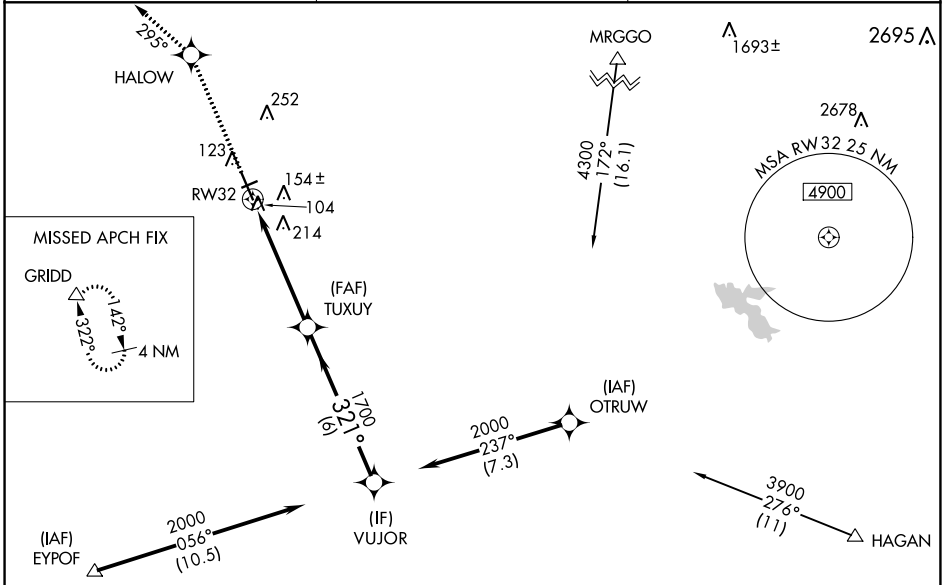
RNAV (GPS) RWY 32

YUBA COUNTY (MYV)

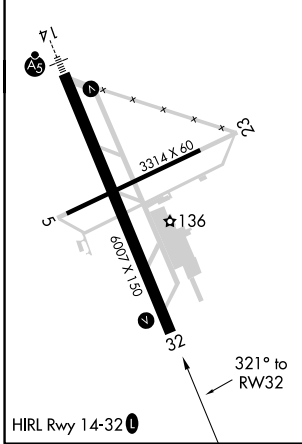
▼ For uncompensated Baro-VNAV systems, LNAV/VNAV NA below -15°C (5°F) or above 54°C (130°F). DME/DME RNP-0.3 NA. When local altimeter setting not received, use Lincoln altimeter setting and increase LPV DA to 357 feet, LNAV/VNAV DA to 418 feet and all MDA 60 feet; increase LPV and LNAV/VNAV all Cats visibility 1/8 mile, LNAV Cats C/D visibility 1/4 mile. Night landing: Rwy 5, 23 NA. Baro-VNAV and VDP NA when using Lincoln altimeter setting.

MISSED APPROACH: Climb to 4000 direct HALOW and via track 295° to GRIDD and hold.

ASOS 118.475	NORCAL APP CON 125.4 259.1	UNICOM 123.05 (CTAF) 0
------------------------	--------------------------------------	----------------------------------



ELEV 64	TDZE 63
----------------	----------------



4000	HALOW	tr 295°	GRIDD	*LNAV only	VUJOR	Procedure Turn NA
↑	✧		△		2000	
		*1.2 NM to RW32	TUXUY		1700	GP 3.00° TCH 32
		1.2 NM	3.8 NM	6 NM		
CATEGORY	A	B	C	D		
LPV DA		313-7/8	250 (300-7/8)			
LNAV/VNAV DA		374-1 1/8	311 (400-1 1/8)			
LNAV MDA	480-1	417 (500-1)	480-1 1/8	417 (500-1 1/8)		
CIRCLING	540-1	476 (500-1)	540-1 1/2	476 (500-1 1/2)	620-2	556 (600-2)

SW-2, 22 FEB 2024 to 21 MAR 2024

SW-2, 22 FEB 2024 to 21 MAR 2024