

WAAS CH 40122 W30A	APP CRS 305°	Rwy ldg TDZE 1195 Apt Elev 1213
--	------------------------	---

RNAV (GPS) RWY 30

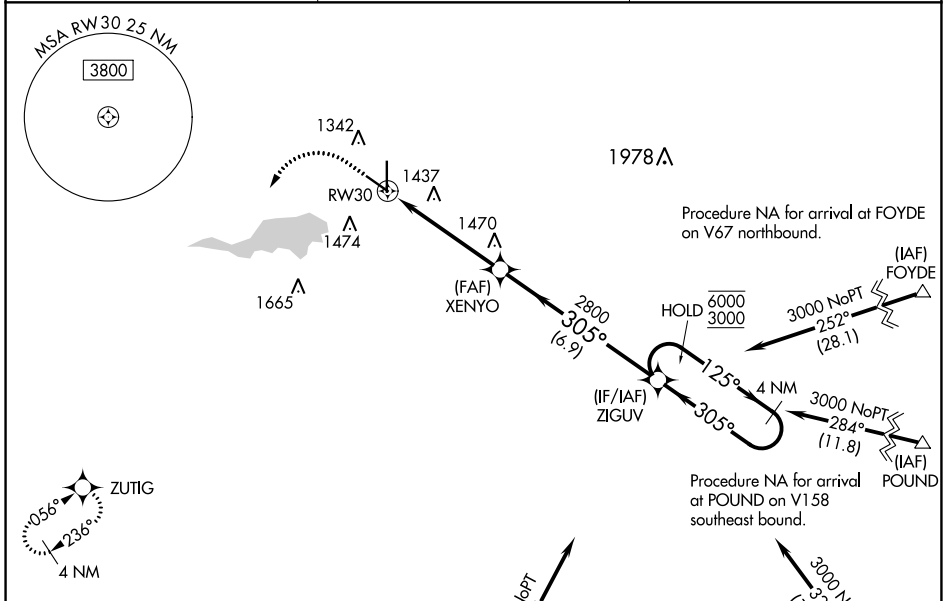
MASON CITY MUNI (MCW)

RNP APCH-GPS.

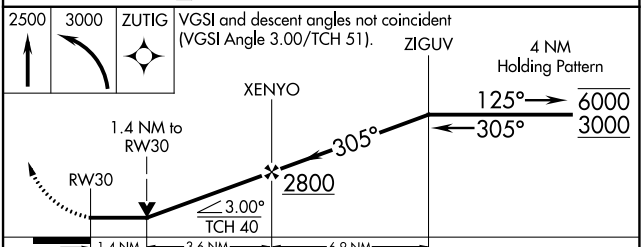
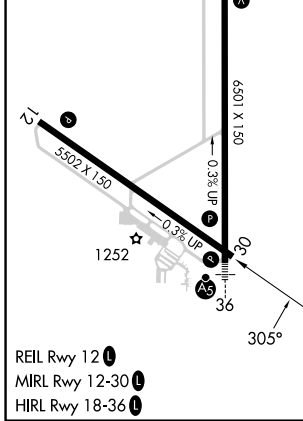
⚠ Rwy 30 helicopter visibility reduction below ¼ SM NA. VDP NA when using Charles City altimeter setting. When local altimeter setting not received, use Charles City altimeter setting and increase all MDA 100 feet and increase LP and LNAV Cat C and D visibility ⅓ SM and Circling Cat C visibility ¼ SM.

MISSED APPROACH: Climb to 2500, then climbing left turn to 3000 direct ZUTIG and hold.

ASOS 120.3	MINNEAPOLIS CENTER 127.3 257.675	UNICOM 123.0 (CTAF) 0
----------------------	--	---------------------------------



ELEV 1213	D	TDZE 1195
-----------	----------	-----------



CATEGORY	A	B	C	D
LP MDA	1680-1	485 (500-1)	1680-1⅓	485 (500-1⅓)
LNAV MDA	1680-1	485 (500-1)	1680-1⅓	485 (500-1⅓)
CIRCLING	1680-1 467 (500-1)	1760-1 547 (600-1)	1780-1½ 567 (600-1½)	1780-2 567 (600-2)

NC-3, 22 FEB 2024 to 21 MAR 2024

NC-3, 22 FEB 2024 to 21 MAR 2024