


VOR/DME MCW 114.9 Chan 96	APP CRS 356°	Rwy Idg 6401 TDZE 1193 Apt Elev 1213
---	------------------------	---

VOR RWY 36

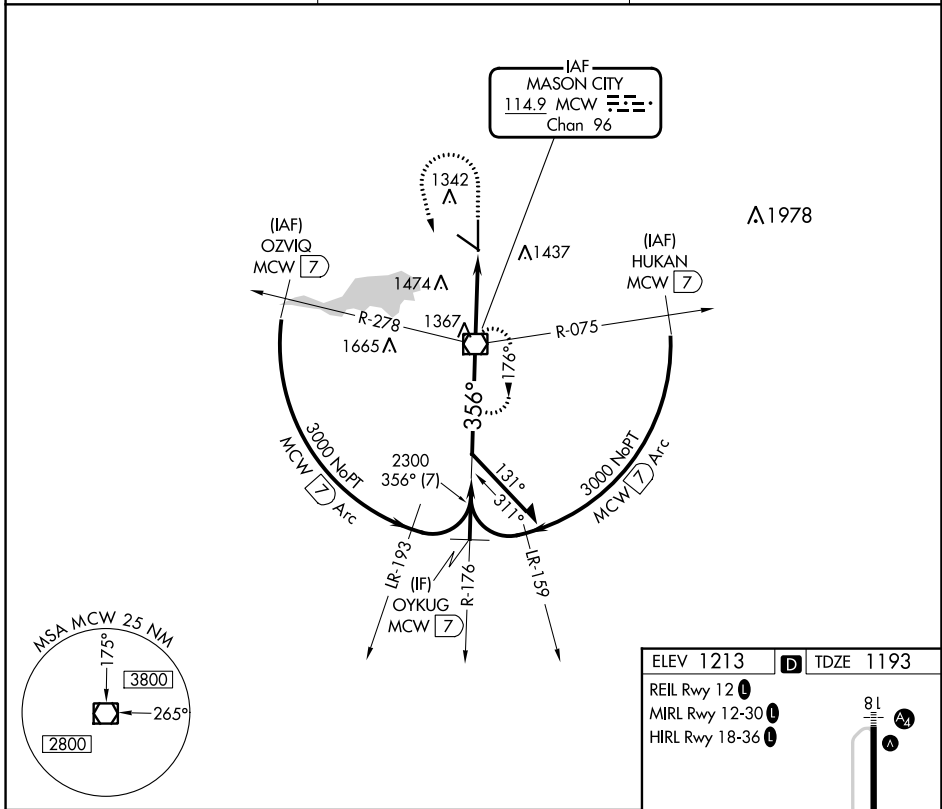
MASON CITY MUNI (MCW)

V VDP NA when using Charles City altimeter setting. When local altimeter setting not received, use Charles City altimeter setting and increase all MDA 100 feet and increase S-36 Cat C/D and Circling Cat C visibility 1/4 mile.

MALS 

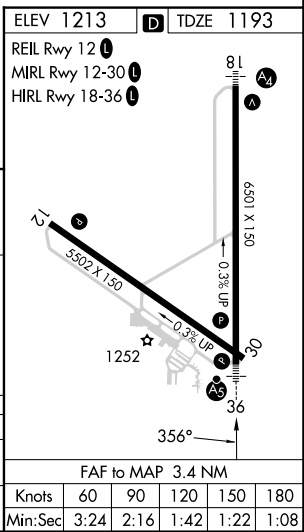
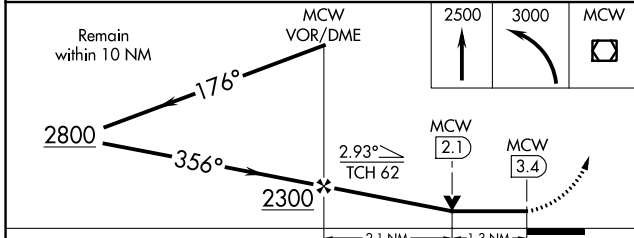
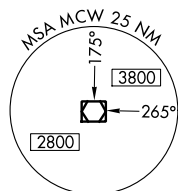
MISSED APPROACH: Climb to 2500 then climbing left turn to 3000 direct MCW VOR/DME and hold.

ASOS 120.3	MINNEAPOLIS CENTER 127.3 257.675	UNICOM 123.0 (CTAF)
----------------------	--	-------------------------------



NC-3, 22 FEB 2024 to 21 MAR 2024

NC-3, 22 FEB 2024 to 21 MAR 2024



CATEGORY	A	B	C	D
S-36	1640-3/4 447 (500-3/4)		1640-7/8 447 (500-7/8)	
CIRCLING	1680-1 467 (500-1)	1760-1 547 (600-1)	1780-1 1/2 567 (600-1 1/2)	1780-2 567 (600-2)