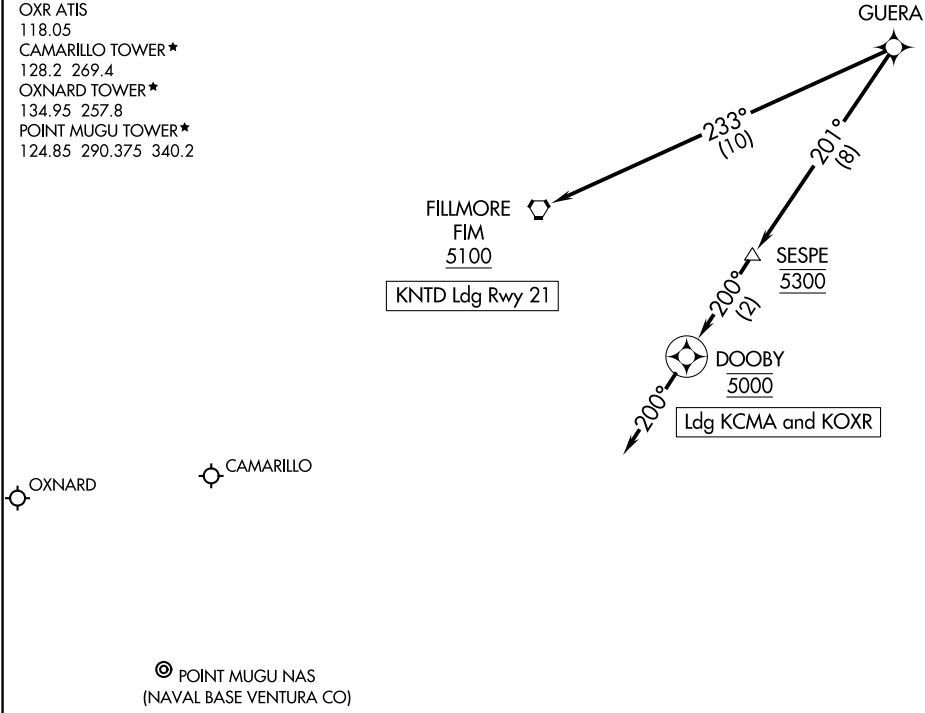


SOCAL APP CON  
 120.4 360.6  
 CMA ATIS  
 126.025  
 KNND ATIS ★  
 125.55 363.05  
 OXR ATIS  
 118.05  
 CAMARILLO TOWER ★  
 128.2 269.4  
 OXNARD TOWER ★  
 134.95 257.8  
 POINT MUGU TOWER ★  
 124.85 290.375 340.2



SW-3, 22 FEB 2024 to 21 MAR 2024

SW-3, 22 FEB 2024 to 21 MAR 2024

NOTE: RADAR required.  
 NOTE: RNAV 1.  
 NOTE: DME/DME/IRU or GPS required.  
 NOTE: Turbojet and turboprop aircraft only.

NOTE: Chart not to scale.

ARRIVAL ROUTE DESCRIPTION

LANDING KNND RWY 21: From GUERA on track 233° to FIM VORTAC at or above 5100. Expect ILS Y or LOC/DME RWY 21 approach.

LANDING KOXR/KCMA: From GUERA on track 201° to cross SESPE at 5300, then on track 200° to cross DOOBY at 5000, then on track 200°. Expect RADAR vectors to final approach course.