

WAAS CH 72623 W07A	APP CRS 075°	Rwy Idg TDZE Apt Elev	5954 37 45
----------------------------------------	------------------------	-----------------------------	---------------------------------------

RNAV (GPS) RWY 7

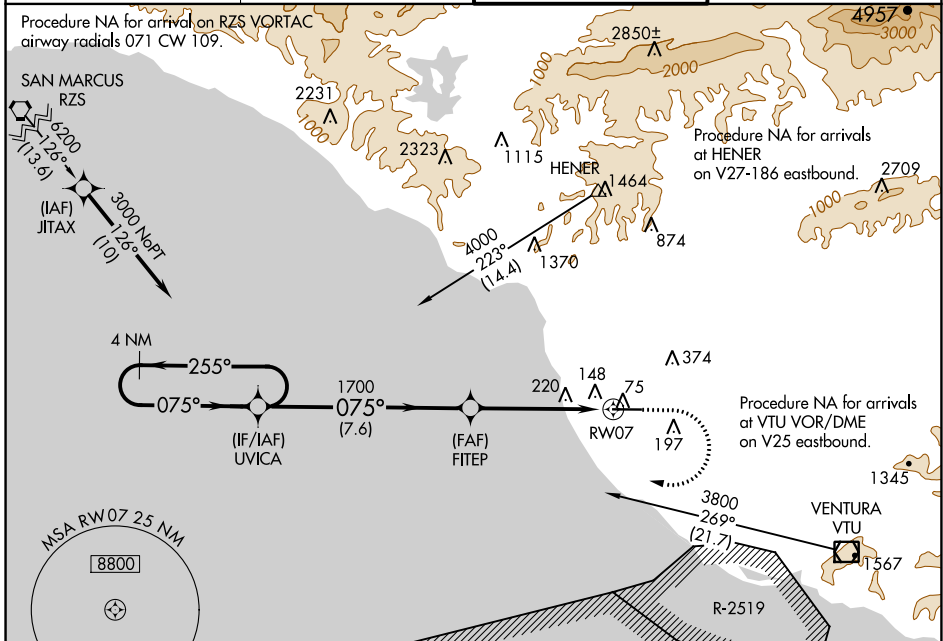
OXNARD (OXR)

RNP APCH-GPS.

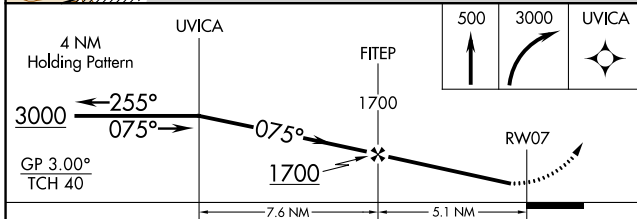
Baro-VNAV NA when using Camarillo altimeter setting. For uncompensated Baro-VNAV systems, LNAV/VNAV NA below -15°C or above 43°C. When local altimeter setting not received, use Camarillo altimeter setting and increase LPV DA to 305 feet, increase LNAV/VNAV DA to 337 feet; increase all MDAs 20 feet and Circling Cat C visibility ¼ SM.

MISSED APPROACH: Climb to 500, then climbing right turn to 3000 direct UVICA and hold.

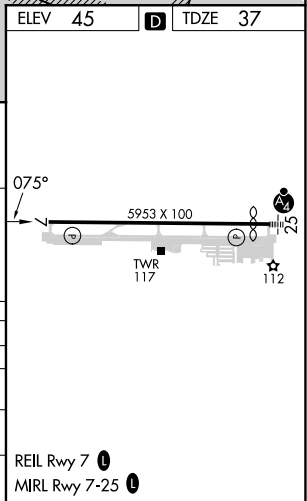
ATIS 118.05	POINT MUGU APP CON* 124.7 335.5	OXNARD TOWER* 134.95 (CTAF) 257.8	GND CON 121.9
-----------------------	-------------------------------------------	---------------------------------------------	-------------------------



ELEV	45	TDZE	37
------	----	------	----



CATEGORY	A	B	C	D
LPV DA		287-1	250 (300-1)	
LNAV/VNAV DA		319-1	282 (300-1)	
LNAV MDA	480-1	443 (500-1)	480-1 $\frac{3}{8}$	443 (500-1 $\frac{3}{8}$)
CIRCLING	500-1 455 (500-1)	520-1 475 (500-1)	700-1 $\frac{3}{4}$ 655 (700-1 $\frac{3}{4}$)	760-2 $\frac{1}{4}$ 715 (800-2 $\frac{1}{4}$)



SW-3, 22 FEB 2024 to 21 MAR 2024

SW-3, 22 FEB 2024 to 21 MAR 2024