

VOR/DME CMA <b>115.8</b> Chan 105	APP CRS <b>247°</b>	Rwy Idg <b>5500</b> TDZE <b>44</b> Apt Elev <b>45</b>
---	------------------------	---

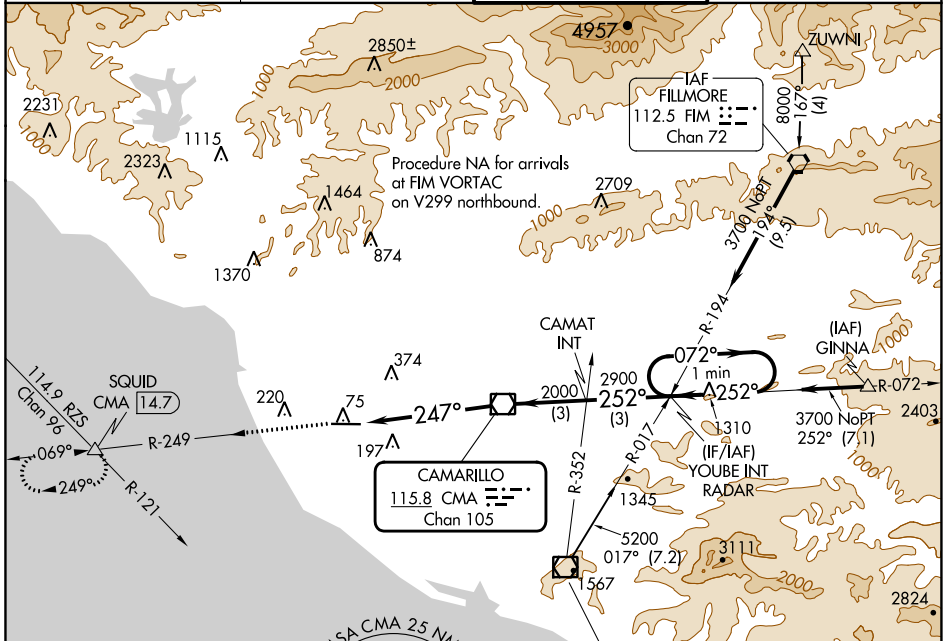
# VOR RWY 25

OXNARD (OXR)

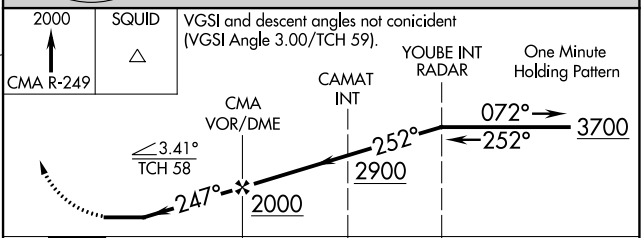
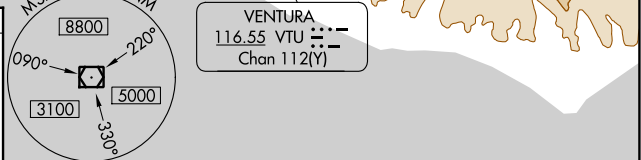
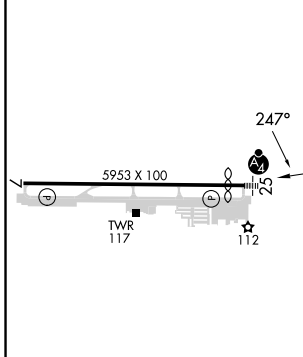
**⚠** Inop table does not apply. When local altimeter setting not received, use Camarillo altimeter setting and increase all MDAs 20 feet, increase Circling Cat C visibility ¼ SM. Rwy 25 helicopter visibility reduction below ¾ SM NA.

**⚠** MISSED APPROACH: Climb to 2000 on CMA R-249 to SQUID INT/14.7 DME and hold.

ATIS <b>118.05</b>	POINT MUGU APP CON* <b>124.7 335.5</b>	OXNARD TOWER* <b>134.95 (CTAF) 257.8</b>	GND CON <b>121.9</b>
-----------------------	---	---	-------------------------



ELEV 45	<b>D</b>	TDZE 44
---------	----------	---------



REIL Rwy 7 **⓪**  
MIRL Rwy 7-25 **⓪**

FAF to MAP 5.3 NM

Knots	60	90	120	150	180
Min:Sec	5:18	3:32	2:39	2:07	1:46

CATEGORY	A	B	C	D
S-25	540-1	496 (500-1)	540-1⅓	496 (500-1⅓)
CIRCLING	540-1	495 (500-1)	700-1¾ 655 (700-1¾)	760-2¼ 715 (800-2¼)

SW-3, 22 FEB 2024 to 21 MAR 2024

SW-3, 22 FEB 2024 to 21 MAR 2024