

CLEGG FIVE ARRIVAL

LEXINGTON APP CON
120.15 259.3 (040°-220°)
120.75 298.9 (221°-039°)
ATIS
126.3

CINCINNATI
117.3 CVG
Chan 120

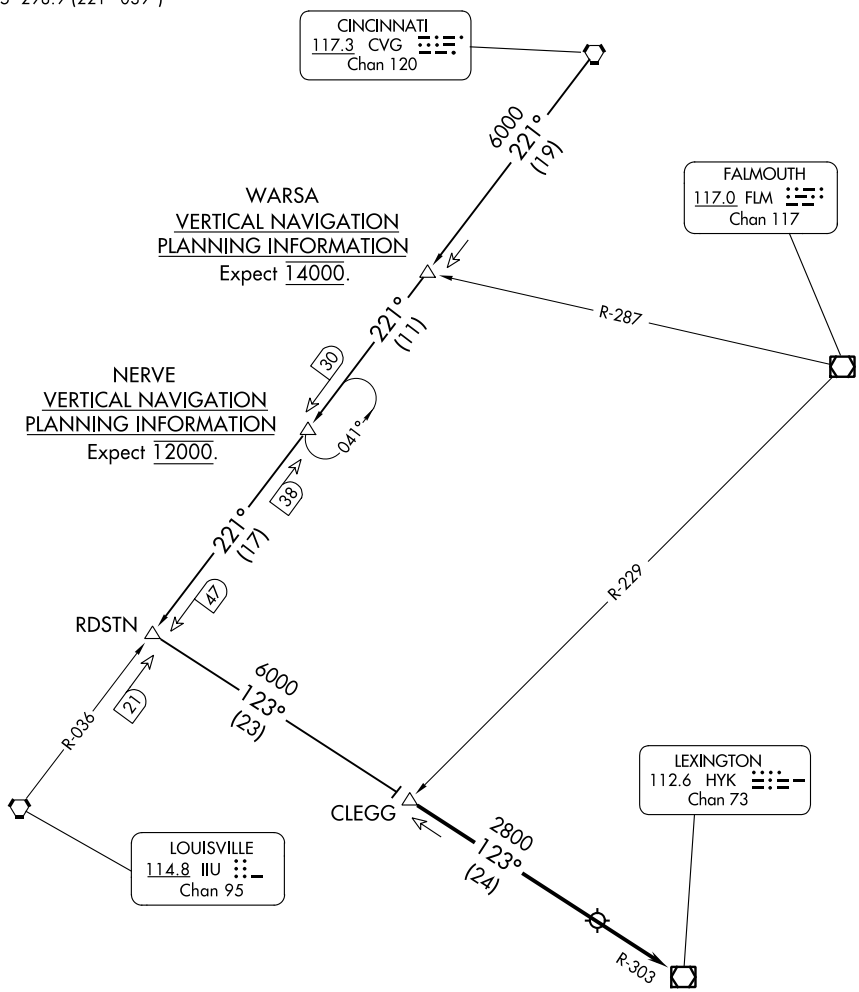
FALMOUTH
117.0 FLM
Chan 117

WARSA
VERTICAL NAVIGATION
PLANNING INFORMATION
Expect 14000.

NERVE
VERTICAL NAVIGATION
PLANNING INFORMATION
Expect 12000.

LOUISVILLE
114.8 IUU
Chan 95

LEXINGTON
112.6 HYK
Chan 73



SE-1, 22 FEB 2024 to 21 MAR 2024

SE-1, 22 FEB 2024 to 21 MAR 2024

ARRIVAL ROUTE DESCRIPTION

CINCINNATI TRANSITION (CVG.CLEGG5):
From over CVG VORTAC on CVG R-221 to RDSTN
then on HYK VOR/DME R-303 to CLEGG. Thence...

...from over CLEGG on HYK R-303 to HYK VOR/DME.
Expect radar vectors to final approach course after
CLEGG.

NOTE: RADAR required.
NOTE: DME required.

NOTE: Chart not to scale.