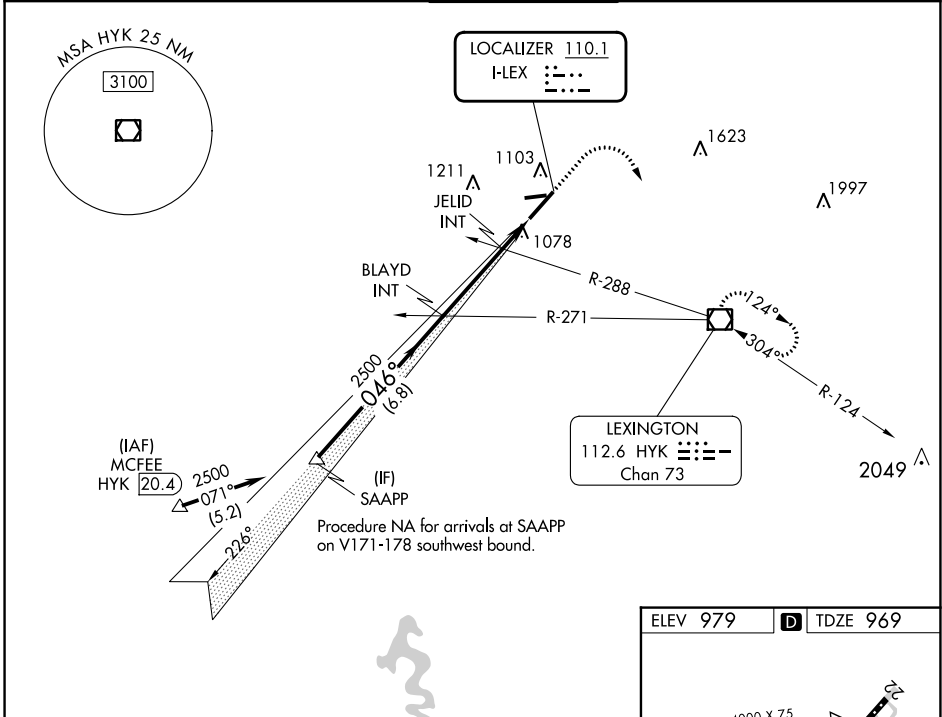


LOC I-LEX 110.1	APP CRS 046°	Rwy Idg 6604
		TDZE 969
		Apt Elev 979

ILS or LOC RWY 4

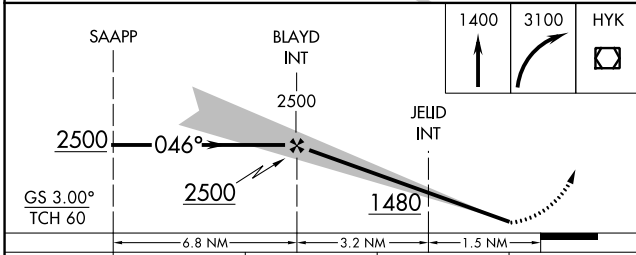
BLUE GRASS (LEX)

DME required for procedure entry.		MALS R	MISSED APPROACH: Climb to 1400 then climbing right turn to 3100 direct HYK VOR/DME and hold, continue climb-in-hold to 3100.	
For inop ALS, increase S-LOC 4 Cats C and D visibility to RVR 5500. When local altimeter setting not received, use Frankfort altimeter setting: increase S-ILS 4 DA to 1231 feet and all visibilities to RVR 2000; increase all MDAs 80 feet and S-LOC 4 visibility Cats C and D to RVR 4500 and increase visibility Cats C and D ¼ SM.				
ATIS 126.3	LEXINGTON APP CON 120.15 259.3 (040°-220°) 120.75 298.9 (221°-039°)	LEXINGTON TOWER 119.1 257.8	GND CON 121.9	CLNC DEL 132.35



SE-1, 22 FEB 2024 to 21 MAR 2024

SE-1, 22 FEB 2024 to 21 MAR 2024



ELEV 979	TDZE 969
----------	----------

TDZ/CL Rwy 4
REIL Rwys 9, 22 and 27
HIRL Rwy 4-22
MIRL Rwy 9-27

FAF to MAP 4.7 NM					
Knots	60	90	120	150	180
Min:Seq	4:42	3:08	2:21	1:53	1:34

CATEGORY	A	B	C	D
S-ILS 4	1169/18		200 (200-½)	
S-LOC 4	1340/24	371 (400-½)	1340/35	371 (400-¾)
CIRCLING	1420-1 441 (500-1)	1440-1 461 (500-1)	1520-1½ 541 (600-½)	1600-2 621 (700-2)