

|            |         |          |      |
|------------|---------|----------|------|
| VORTAC CMI | APP CRS | Rwy Idg  | 6502 |
| 110.0      | 207°    | TDZE     | 750  |
| Chan 37    |         | Apt Elev | 755  |

# VOR RWY 22

UNIVERSITY OF ILLINOIS/WILLARD (CMI)

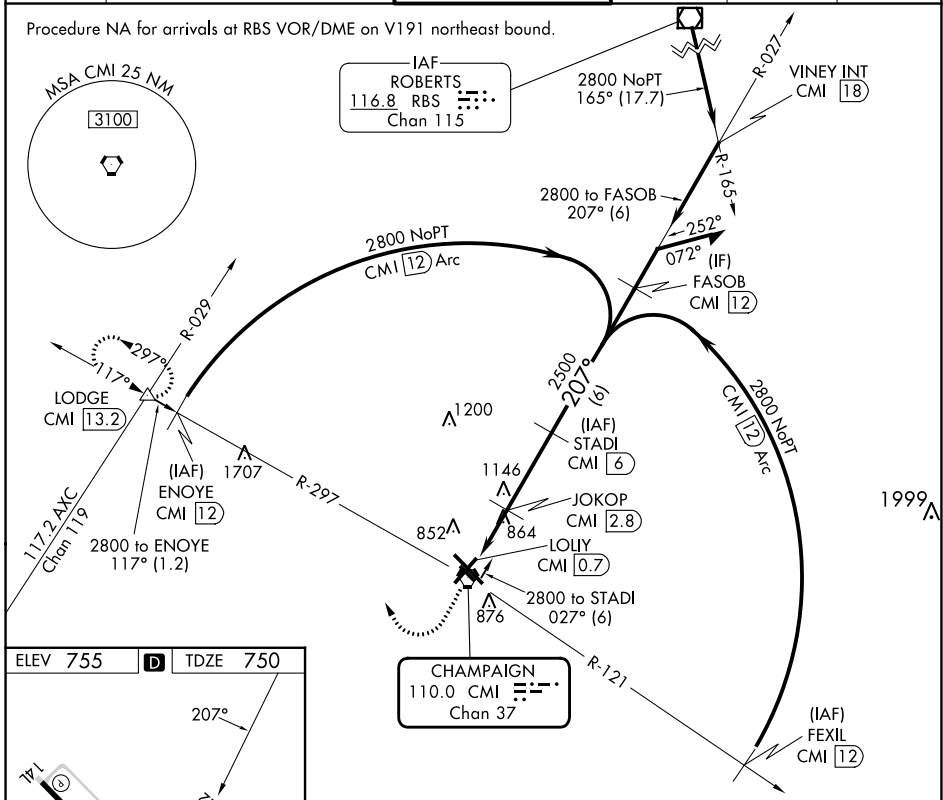
DME required.

**ASR** Rwy 22 helicopter visibility reduction below ¾ SM NA.

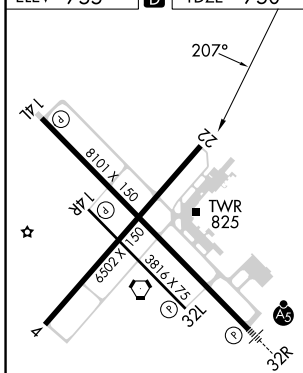
**MISSED APPROACH:** Climb to 2800 then right turn on heading 340° and on CMI VORTAC R-297 to LODGE INT/CMI 13.2 DME and hold.

|        |   |                    |         |          |        |
|--------|---|--------------------|---------|----------|--------|
| ATIS   | CHAMPAIGN APP CON *                                     | CHAMPAIGN TOWER *  | GND CON | CLNC DEL | UNICOM |
| 124.85 | 121.35 285.65 (319°-138°)<br>132.85 290.225 (139°-318°) | 120.4 (CTAF) 229.4 | 121.8   | 128.75   | 122.95 |

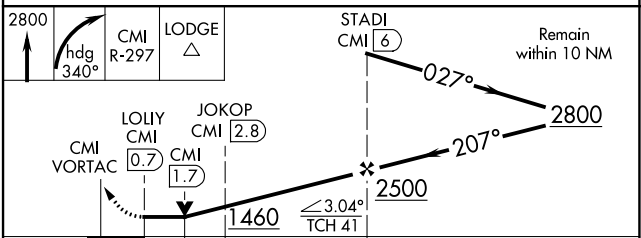
Procedure NA for arrivals at RBS VOR/DME on V191 northeast bound.



|          |   |          |
|----------|---|----------|
| ELEV 755 | D | TDZE 750 |
|----------|---|----------|



- HIRL Rwy 14L-32R
- MIRL Rwy 4-22
- MIRL Rwy 14R-32L



| CATEGORY          | A      | B           | C                       | D                       |
|-------------------|--------|-------------|-------------------------|-------------------------|
| S-22              | 1120-1 | 370 (400-1) |                         | 1120-1¼<br>370 (400-1¼) |
| <b>C</b> CIRCLING | 1240-1 | 485 (500-1) | 1500-2¼<br>745 (800-2¼) | 1500-2½<br>745 (800-2½) |

EC-3, 22 FEB 2024 to 21 MAR 2024

EC-3, 22 FEB 2024 to 21 MAR 2024