

ILS RWY 25 (CAT II)

LOC I-TYV 109.9	APCH CRS 252°	Rwy Idg 12,007 TDZE 301 Arprt Elev 312	AL-738 [USAF]	LITTLE ROCK AFB (KLRF)
---------------------------	-------------------------	---	---------------	------------------------

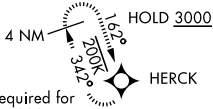
RNP APCH. RNAV1-GPS or RADAR required.	ALSIF-2 	MISSED APPROACH: Climb to 900 then climbing right turn to 3000 direct HERCK and hold.
--	-------------	---

ATIS ★ 119.175 251.1	APP CON 119.5 306.2	TOWER 120.6 269.075	GND CON 132.8 275.8	CLNC DEL 253.5
--------------------------------	-------------------------------	-------------------------------	-------------------------------	--------------------------

CATEGORY II ILS-SPECIAL AIRCREW & AIRCRAFT CERTIFICATION REQUIRED

ALTERNATE MISSED APPROACH:
Climbing to 3000 fly runway heading until 2 DME, then turn right heading 360° expect further clearance from ATC.

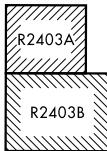
PROCEDURE EFFECTIVE BY NOTAM



ATC RADAR required for holding above 4000' or greater than 200 KIAS.

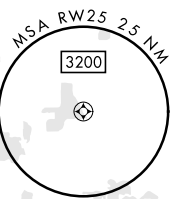
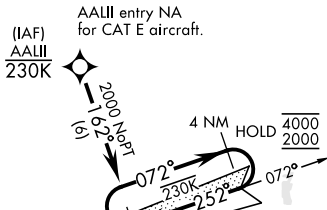
JACKSONVILLE
Chan 29 LRF

Paired VHF/DME frequency 109.2



CAT E Act: RADAR required when R-2403 active

LOCALIZER 109.9
I-TYV



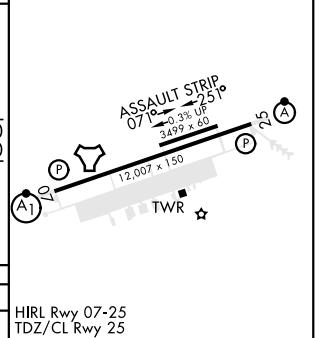
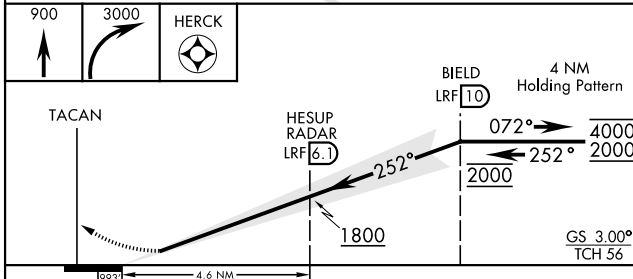
ATC RADAR required for holding above 4000' or greater than 230 KIAS.

HESUP RADAR LRF **6.1**

(IF/IAF) BIELD LRF **10** 2000

• 823	ELEV 312	TDZE 301
-------	----------	----------

EMERG SAFE ALT 100 NM 4000



CATEGORY	A	B	C	D	E
S-ILS 25	RA 114/12		100	DA 401	

HIRL Rwy 07-25
TDZ/CL Rwy 25

ILS RWY 25 (CAT II)

SC-1, 22 FEB 2024 to 21 MAR 2024

SC-1, 22 FEB 2024 to 21 MAR 2024