

ILS or LOC RWY 25

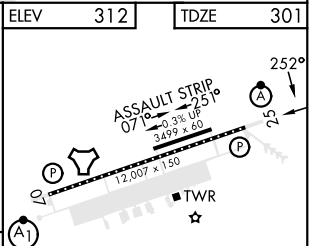
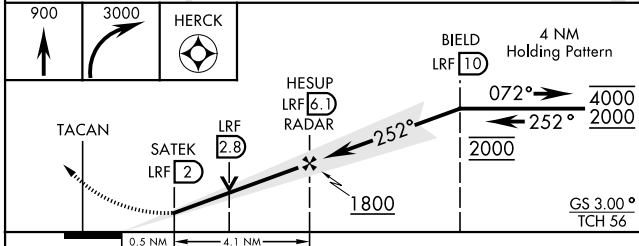
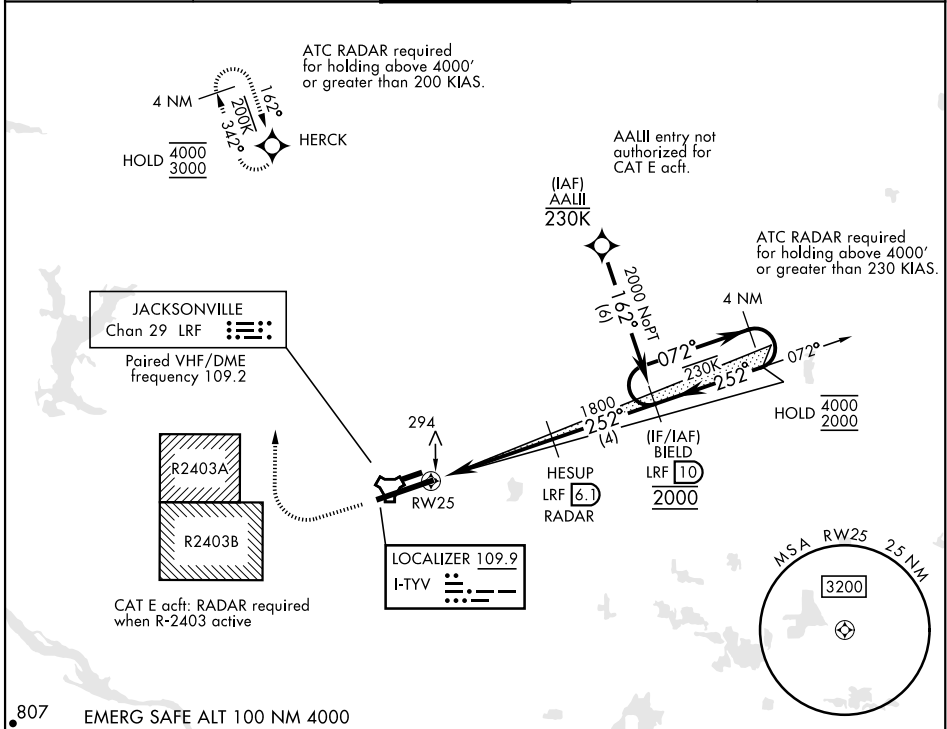
LOC I-TYV 109.9	APCH CRS 252°	Rwy Ldg 12,007
		TDZE 301
		Arpt Elev 312

AL-738 [USAF]

LITTLE ROCK AFB (KLRF)

RNP APCH: RNAV1 - GPS or RADAR required.		ALS-F2 	MISSED APPROACH: Climb to 900 then climbing right turn to 3000 direct HERCK and hold as published.
<p>*When TDZL/CL inop, increase RVR to 24. RVR 18 still authorized with use of FD, AP, or HUD to DA. ** When ALS inop, increase RVR to 40, vis to 3/4 mile. *** When ALS inop, increase CAT AB RVR to 55, vis to 1 mile, CAT CDE vis to 1 1/2 miles. *** Circling not authorized S of Rwy 7-25.</p>			ALTERNATE MISSED APPROACH: Climbing to 3000 fly runway heading until LRF 2 DME, then turn right heading 360°, EFC from ATC.

ATIS ★ 119.175 251.1	APP CON 119.5 306.2	TOWER 120.6 269.075	GND CON 132.8 275.8	CLNC DEL 253.5
--------------------------------	-------------------------------	-------------------------------	-------------------------------	--------------------------



CATEGORY	A	B	C	D	E
S-ILS 25*	501/18		200	(200-1/2)	
S-LOC 25**	760/24	459 (500-1/2)	760/45	459	(500-7/8)
CIRCLING ***	780-1 468 (500-1)	920-1 608 (700-1)	920-1 1/4 608 (700-1 1/4)	1040-2 1/4 728 (800-2 1/4)	1040-2 1/2 728 (800-2 1/2)

ELEV	312	TDZE	301
HIRL Rwy 07-25 TDZL/CL Rwy 25			
FAF to MAP 4.1 NM			
Knots	60	90	120 150 180
Min:Sec	4:06	2:44	2:03 1:38 1:22

ILS or LOC RWY 25

SC-1, 22 FEB 2024 to 21 MAR 2024

SC-1, 22 FEB 2024 to 21 MAR 2024