

JACKSONVILLE, ARKANSAS

RNAV (GPS) RWY 25

WAAS CH 67565 W25A	APCH CRS 252°	Rwy ldg TDZE Arpt Elev	12,007 301 312
---------------------------------	-------------------------	------------------------------	---

AL-738 (USAF)

LITTLE ROCK AFB (KLRF)

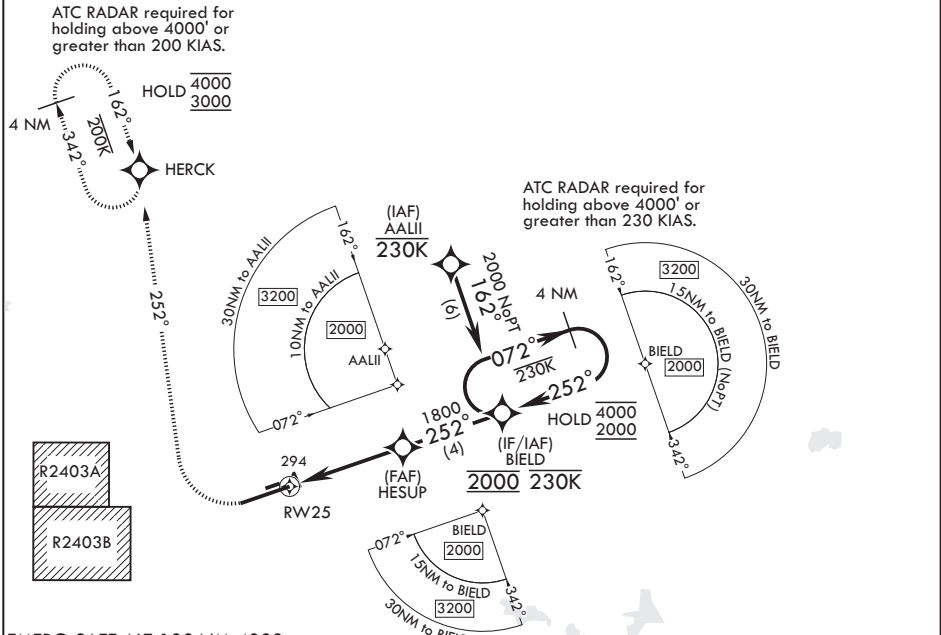
RNP APCH - GPS	ALSIF-2	MISSED APPROACH: Climb to 900 then climbing right turn to 3000 direct HERCK and hold.
RADAR required		
* When ALS inop, increase RVR to 40, vis to 3/4 mile. When TDZL/CL inop increase RVR to 24.		

ATIS* 119.175 251.1	APP CON/DEP CON 119.5 306.2	TOWER 120.6 269.075	GND CON 132.8 275.8	CLNC DEL 253.5
-------------------------------	---------------------------------------	-------------------------------	-------------------------------	--------------------------

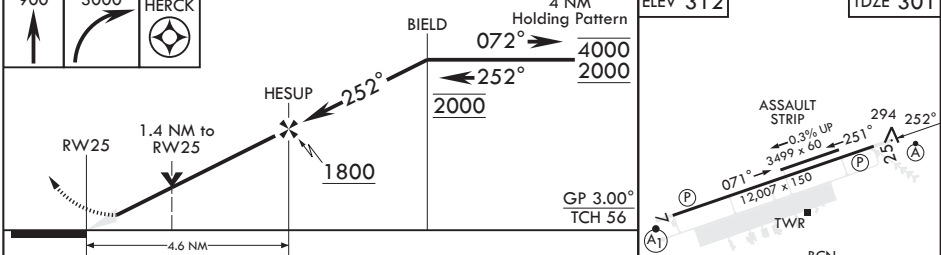
** When ALS inop, increase CAT **850**
 AB RVR to 55, vis to 1 mile;
 CAT CD vis to 1 3/8 miles.

ALTERNATE MISSED APPROACH:
 Climbing to 3000, fly runway heading until 2 DME then right turn heading 360°, expect RADAR vectors from ATC.

*** Circling not authorized
 S of Rwy 7-25



EMERG SAFE ALT 100 NM 4000



CATEGORY	A	B	C	D	ELEV 312	TDZE 301
LPV DA*	501/18 200 (200-½)					
LNAV MDA**	780/24 479 (500-½)		780/50 479 (500-1)			
CIRCLING***	780-1 468 (500-1)	920-1 608 (700-1)	920-1¼ 608 (700-1¼)	1040-2¼ 728 (800-2¼)		

HIRL Rwy 7-25
TDZL/CL Rwy 25

JACKSONVILLE, ARKANSAS

34°55'N - 92°09'W

LITTLE ROCK AFB (KLRF)

Orig 10AUG23

RNAV (GPS) RWY 25

SC-1, 22 FEB 2024 to 21 MAR 2024

SC-1, 22 FEB 2024 to 21 MAR 2024