

TACAN RWY 25

TACAN LRF Chan 29	APCH CRS 259°	Rwy ldg TDZE 301 Arprt Elev 312
--------------------------	----------------------	--

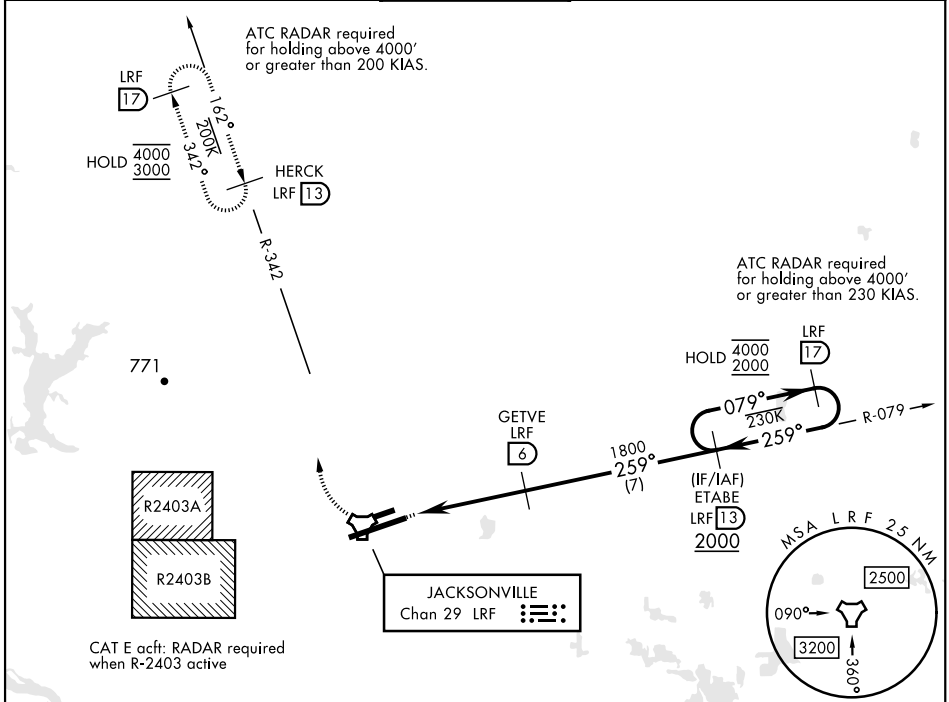
AL-738 [USAF]

LITTLE ROCK AFB (KLRF)

ALSF-2 MISSED APPROACH: Climbing right turn to 3000 to intercept LRF R-342 outbound to HERCK and hold as published.

ALTERNATE MISSED APPROACH: Climbing to 3000, fly runway heading until LRF 2 DME, then turn right heading 360°, EFC from ATC.

ATIS ★ 119.175 251.1	APP CON 119.5 306.2	TOWER 120.6 269.075	GND CON 132.8 275.8	CLNC DEL 253.5
-----------------------------	----------------------------	----------------------------	----------------------------	-----------------------

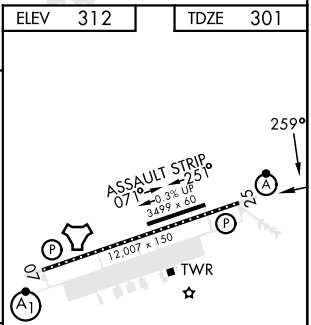
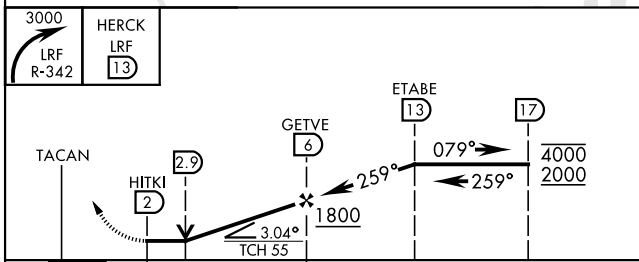


SC-1, 22 FEB 2024 to 21 MAR 2024

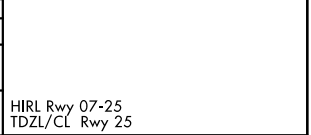
SC-1, 22 FEB 2024 to 21 MAR 2024

ELEV 312	TDZE 301
----------	----------

EMERG SAFE ALT 100 NM 4000



CATEGORY	A	B	C	D	E
S-25 *	800/24 499 (500-½)		800/50 499		(500-1)
CIRCLING **	800-1 488 (500-1)	920-1 608 (700-1)	920-1¾ 608 (700-1¾)	1040-2¼ 728 (800-2¼)	1040-2½ 728 (800-2½)



JACKSONVILLE, ARKANSAS 34° 55' N-92° 09' W LITTLE ROCK AFB (KLRF)

Orig 07SEP23

TACAN RWY 25

HIRL Rwy 07-25
TDZL/CL Rwy 25