

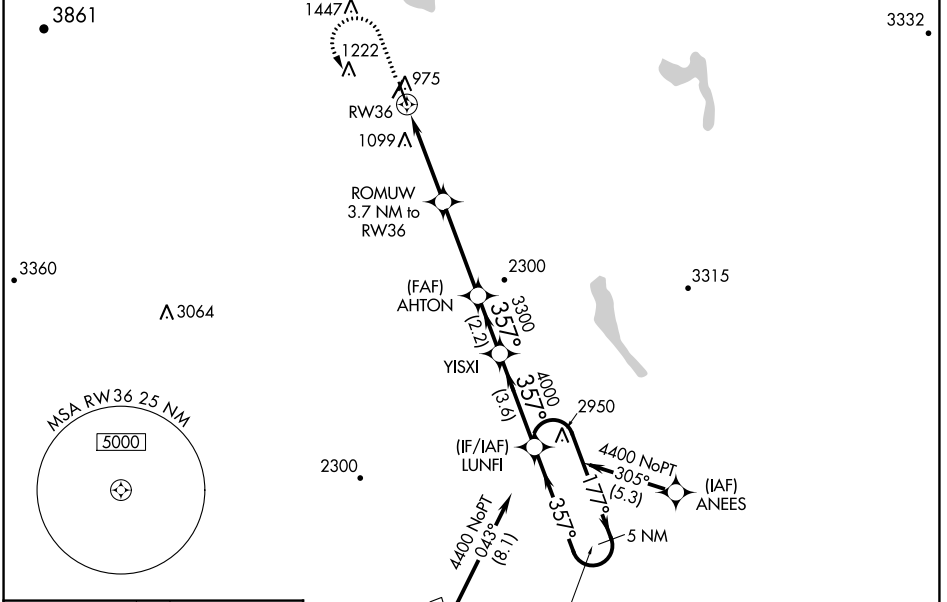
WAAS CH 82737 W36A	APP CRS 357°	Rwy Idg TDZE Apt Elev	5301 934 934
--	------------------------	-----------------------------	---

RNAV (GPS) RWY 36

NORtheast KINGDOM INTL (EFK)

RNP APCH - GPS.	MISSED APPROACH: Climb to 2300 then climbing left turn to 4400 direct LUNFI and hold.
<p>⚠ Circling to Rwy 5 and 23 NA at night. Rwy 36 helicopter visibility reduction below $\frac{3}{4}$ SM NA. For uncompensated Baro-VNAV systems, LNAV/VNAV NA below -16°C or above 54°C.</p> <p>❄ -32°C</p>	

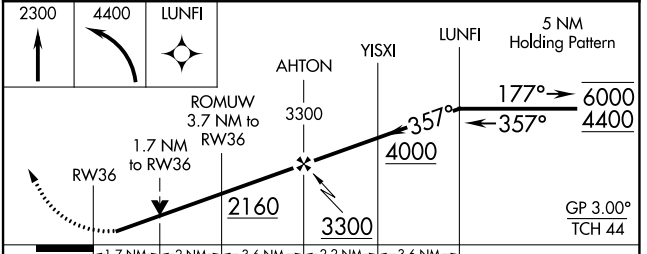
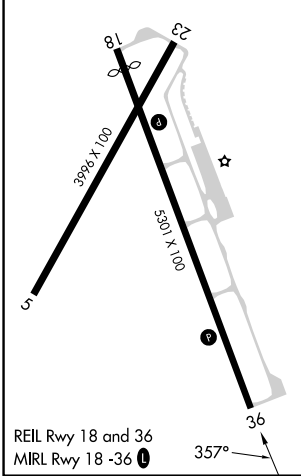
AWOS-3P 118.275	BOSTON CENTER 135.7 282.2	UNICOM 122.8 (CTAF) 0
---------------------------	-------------------------------------	---------------------------------



NE-1, 22 FEB 2024 to 21 MAR 2024

NE-1, 22 FEB 2024 to 21 MAR 2024

ELEV 934	TDZE 934
----------	----------



CATEGORY	A	B	C	D
LPV DA	1185- $\frac{3}{4}$		251 (300- $\frac{3}{4}$)	NA
LNAV/VNAV DA	1467-1 $\frac{1}{2}$		533 (600-1 $\frac{1}{2}$)	NA
LNAV MDA	1520-1	586 (600-1)	1520-1 $\frac{3}{4}$ 586 (600-1 $\frac{3}{4}$)	NA
C CIRCLING	1520-1 586 (600-1)	1600-1 666 (700-1)	1980-3 1046 (1100-3)	NA