

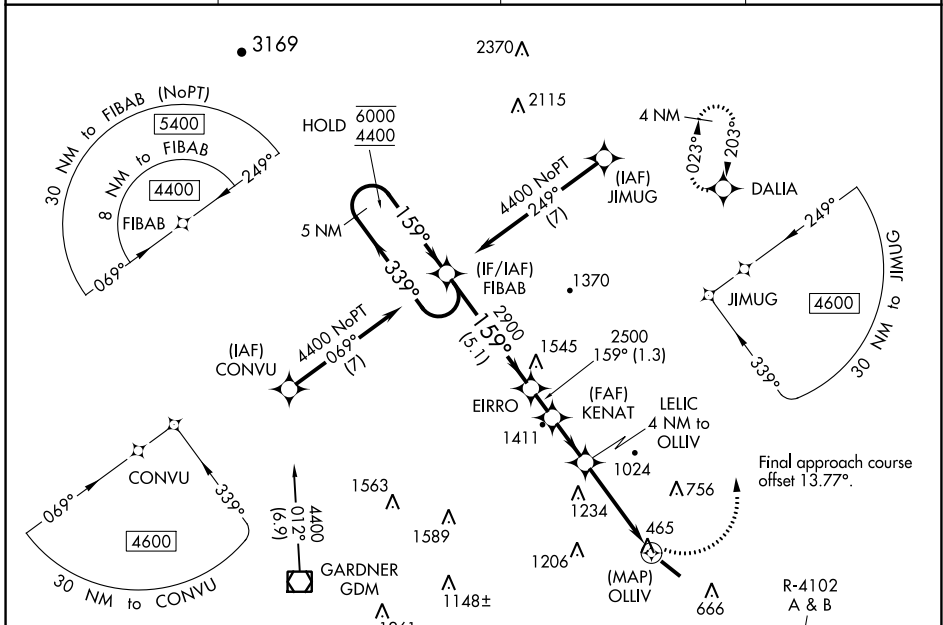
APP CRS	Rwy Idg	4538
159°	TDZE	344
	Apt Elev	345

RNAV (GPS) RWY 14

FITCHBURG MUNI (FIT)

RNP APCH.	MISSED APPROACH: Climbing left turn to 3500 direct DALIA and hold.
<p>▼ Rwy 14 helicopter visibility reduction below ¾ SM NA.</p> <p>⚠ Circling NA southwest of Rwy 14-32 at night.</p> <p>❄ -22°C</p>	

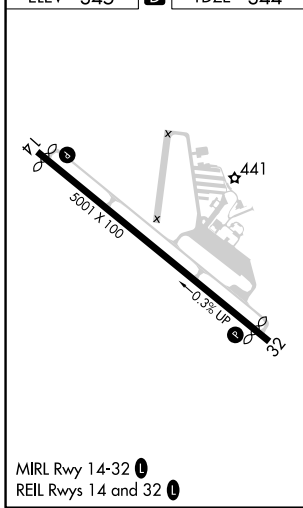
ASOS 135.175	BOSTON APP CON 124.4 279.6	UNICOM 122.7 (CTAF)	123.0 0
------------------------	--------------------------------------	-------------------------------	-----------------------



NE-1, 22 FEB 2024 to 21 MAR 2024

NE-1, 22 FEB 2024 to 21 MAR 2024

ELEV 345	D	TDZE 344
----------	----------	----------



Procedure NA for arrival on GDM VOR/DME airway radials 339 CW 042.

	5 NM Holding Pattern	FIBAB	Visual Segment - Obstacles.	3500	DALIA
	6000 ← 339°				
	4400 → 159°				
		2900			
			2500		
				1860	
					OLLIV
					2.7 NM to OLLIV
					LELIC 4 NM to OLLIV
					KENAT
					EIRRO
					FIBAB
					5.1 NM
					1.3 NM
					2 NM
					1.3 NM
					2.7 NM
					0.5 NM
CATEGORY	A	B	C	D	
LNAV MDA	1420-1¼ 1076 (1100-1¼)	1420-1½ 1076 (1100-1½)	1420-3 1076 (1100-3)	NA	
C CIRCLING	1420-1¼ 1075 (1100-1¼)	1420-1½ 1075 (1100-1½)	1520-3 1175 (1200-3)	NA	