

NDB LQL <b>263</b>	APP CRS <b>099°</b>	Rwy ldg TDZE Apt Elev	<b>4272</b> <b>625</b> <b>626</b>
-----------------------	------------------------	-----------------------------	-----------------------------------------

# NDB RWY 10

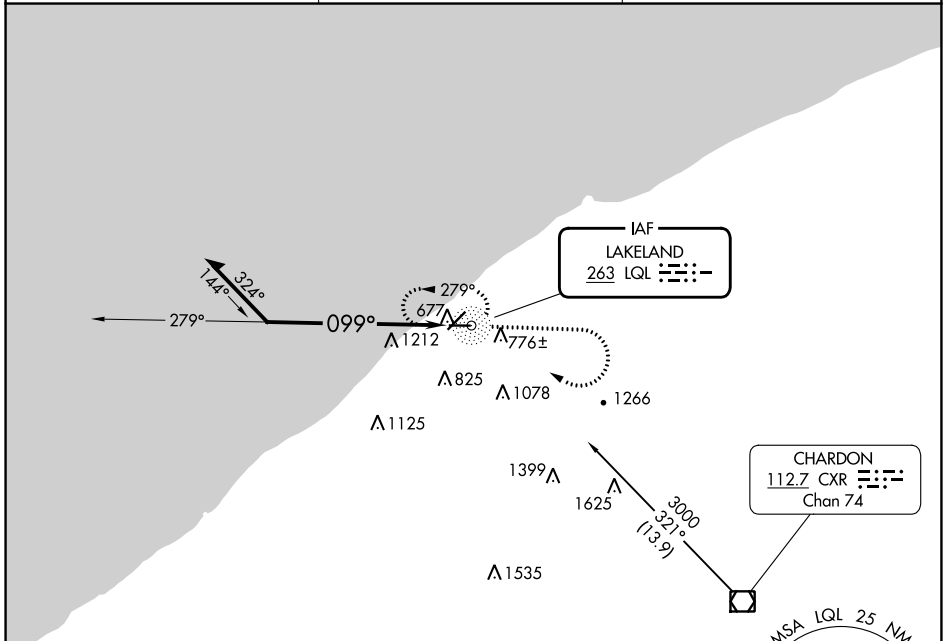
LAKE COUNTY EXEC (LNN)

RADAR required for procedure entry.

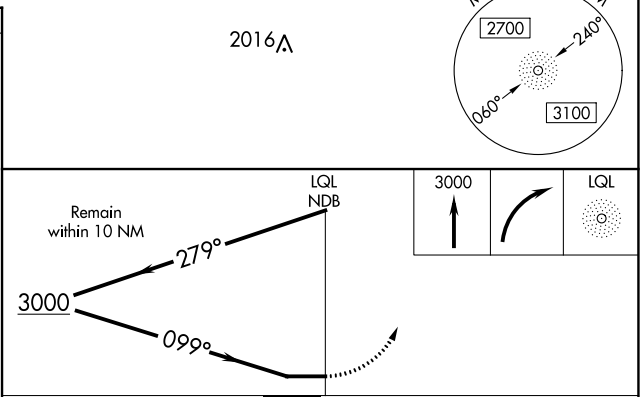
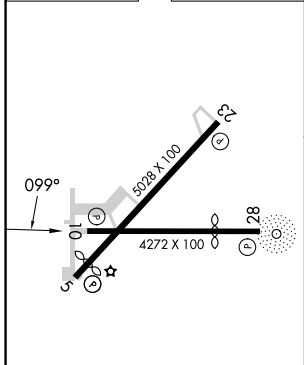
▼ NA Rwy 10 helicopter visibility reduction below 3/4 SM NA.

MISSED APPROACH: Climb to 3000 then right turn direct LQL NDB and hold.

AWOS-3PT <b>119.225</b>	CLEVELAND APP CON <b>125.35 346.325</b>	UNICOM <b>122.725 (CTAF) 0</b>
----------------------------	--------------------------------------------	-----------------------------------



ELEV 626	TDZE 625
----------	----------



CATEGORY	A	B	C	D
S-10	1700-1¼ 1075 (1100-1¼)	1700-1½ 1075 (1100-1½)	1700-3 1075 (1100-3)	NA
CIRCLING	1700-1¼ 1074 (1100-1¼)	1700-1½ 1074 (1100-1½)	1700-3 1074 (1100-3)	NA

EC-2, 22 FEB 2024 to 21 MAR 2024

EC-2, 22 FEB 2024 to 21 MAR 2024