

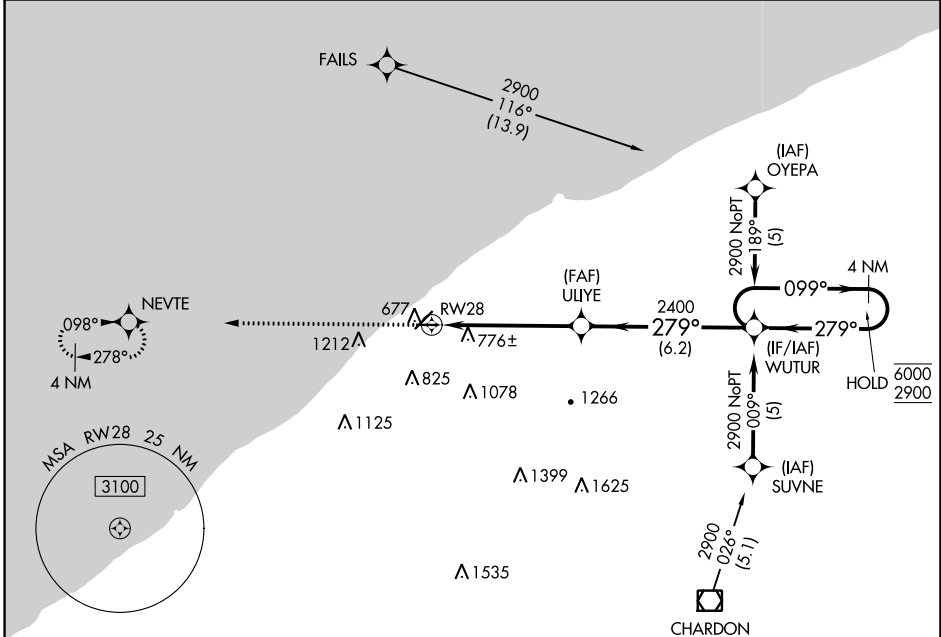
APP CRS	Rwy Idg	<b>3148</b>
<b>279°</b>	TDZE	<b>626</b>
	Apt Elev	<b>626</b>

# RNAV (GPS) RWY 28

LAKE COUNTY EXEC (LNN)

RNP APCH - GPS.	MISSED APPROACH: Climb to 2300 direct NEVTE and hold.
<b>▽</b> <b>▲</b> Rwy 28 helicopter visibility reduction below ¾ SM NA.	

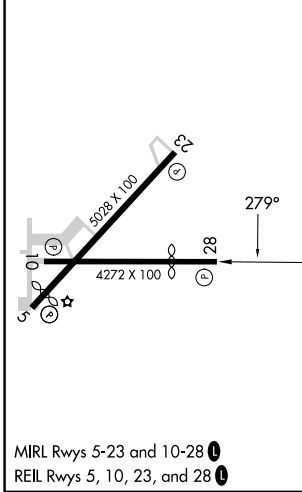
AWOS-3PT <b>119.225</b>	CLEVELAND APP CON <b>125.35 346.325</b>	UNICOM <b>122.725 (CTAF) 0</b>
----------------------------	--	-----------------------------------



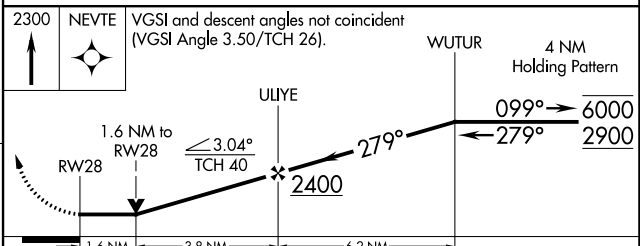
EC-2, 22 FEB 2024 to 21 MAR 2024

EC-2, 22 FEB 2024 to 21 MAR 2024

ELEV 626	TDZE 626
----------	----------



2016  $\Delta$



CATEGORY	A	B	C	D
LNAV MDA	1260-1	634 (700-1)	1260-1¾ 634 (700-1¾)	NA
CIRCLING	1260-1	634 (700-1)	1520-2¾ 894 (900-2¾)	NA

WILLOUGHBY, OHIO  
 MIRL Rwy 5-23 and 10-28 **0**  
 REL Rwy 5, 10, 23, and 28 **0**

41°41'N-81°23'W

# RNAV (GPS) RWY 28

LAKE COUNTY EXEC (LNN)