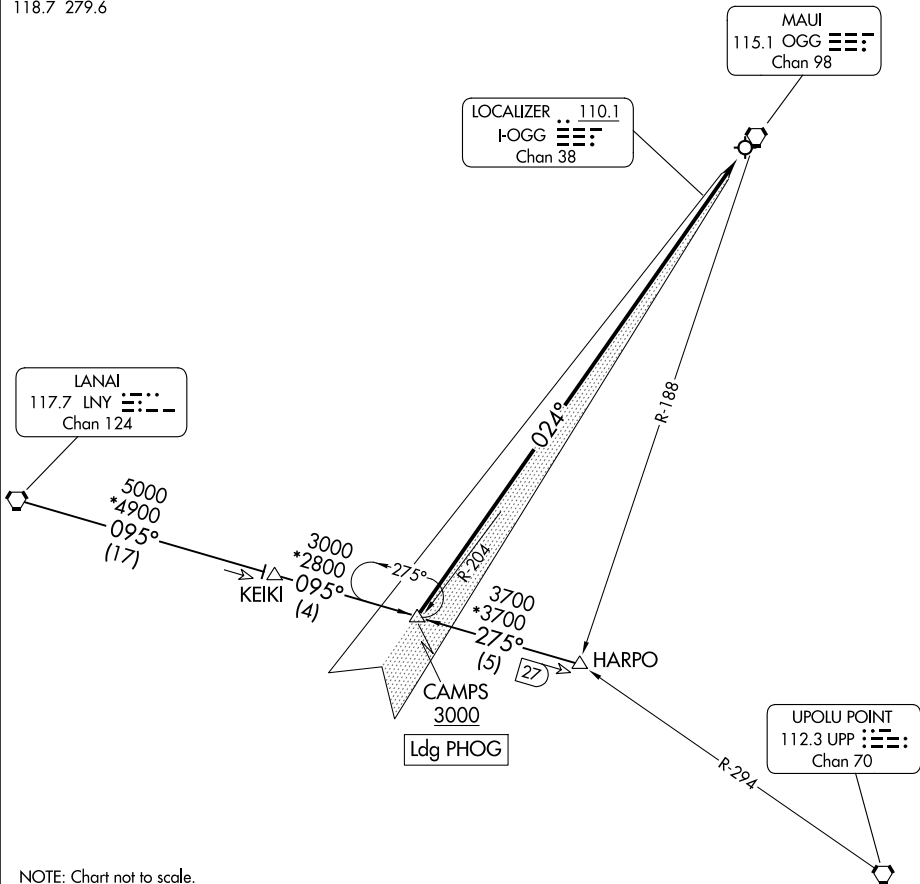


HCF CENTER  
119.5 225.4  
ATIS  
128.6  
MAUI TOWER\*  
118.7 279.6

RADAR required to HARPO.  
DME required for LANAI Transition.



NOTE: Chart not to scale.

### ARRIVAL ROUTE DESCRIPTION

HARPO TRANSITION (HARPO.CAMPS4): From over HARPO on LNY R-095 to CAMPS.  
Thence . . . .

LANAI TRANSITION (LNY.CAMPS4): From over LNY VORTAC on LNY R-095 to CAMPS.  
Thence . . . .

. . . . cross CAMPS at or above 3000, then on I-OGG localizer course. Expect  
ILS Y or LOC Y RWY 2 approach.

PAC, 25 JAN 2024 to 21 MAR 2024

PAC, 25 JAN 2024 to 21 MAR 2024