

(LNDHY.LNDHY1) 19171

LNDHY ONE ARRIVAL (RNAV)

AL-762 (FAA)

KAHULUI (OGG) (PHOG)

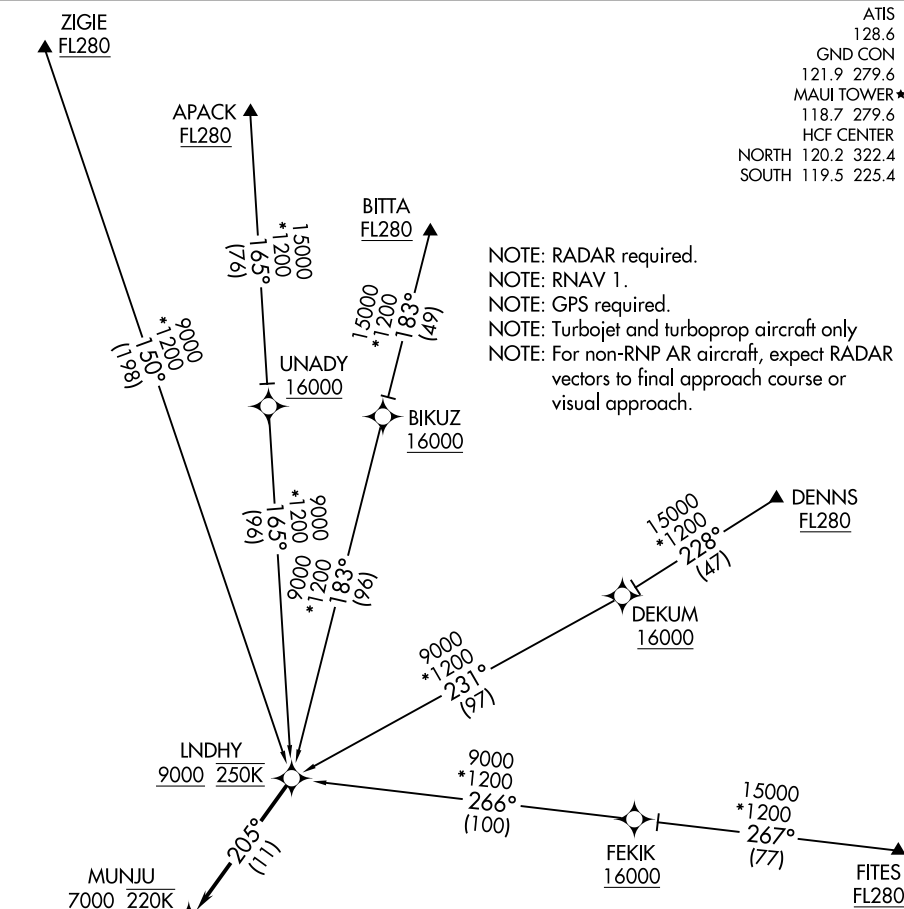
KAHULUI, HAWAII

ATIS 128.6
 GND CON 121.9 279.6
 MAUI TOWER* 118.7 279.6
 HCF CENTER
 NORTH 120.2 322.4
 SOUTH 119.5 225.4

NOTE: RADAR required.
 NOTE: RNAV 1.
 NOTE: GPS required.
 NOTE: Turbojet and turboprop aircraft only
 NOTE: For non-RNP AR aircraft, expect RADAR vectors to final approach course or visual approach.

PAC, 25 JAN 2024 to 21 MAR 2024

PAC, 25 JAN 2024 to 21 MAR 2024



ARRIVAL ROUTE DESCRIPTION

- APACK TRANSITION (APACK.LNDHY1)
- BITTA TRANSITION (BITTA.LNDHY1)
- DENNS TRANSITION (DENNS.LNDHY1)
- FITES TRANSITION (FITES.LNDHY1)
- ZIGIE TRANSITION (ZIGIE.LNDHY1)

From LNDHY on track 205° to cross MUNJU at or above 7000 and at 220K, then on track 204° to cross HOMAI at 5000 and at 210K, then on track 204° . Expect RNAV (RNP)/ILS/Visual Approach Landing Rwy 2, as assigned by ATC.

NOTE: Chart not to scale.

LNDHY ONE ARRIVAL (RNAV)

(LNDHY.LNDHY1) 20JUN19

KAHULUI, HAWAII
KAHULUI (OGG) (PHOG)