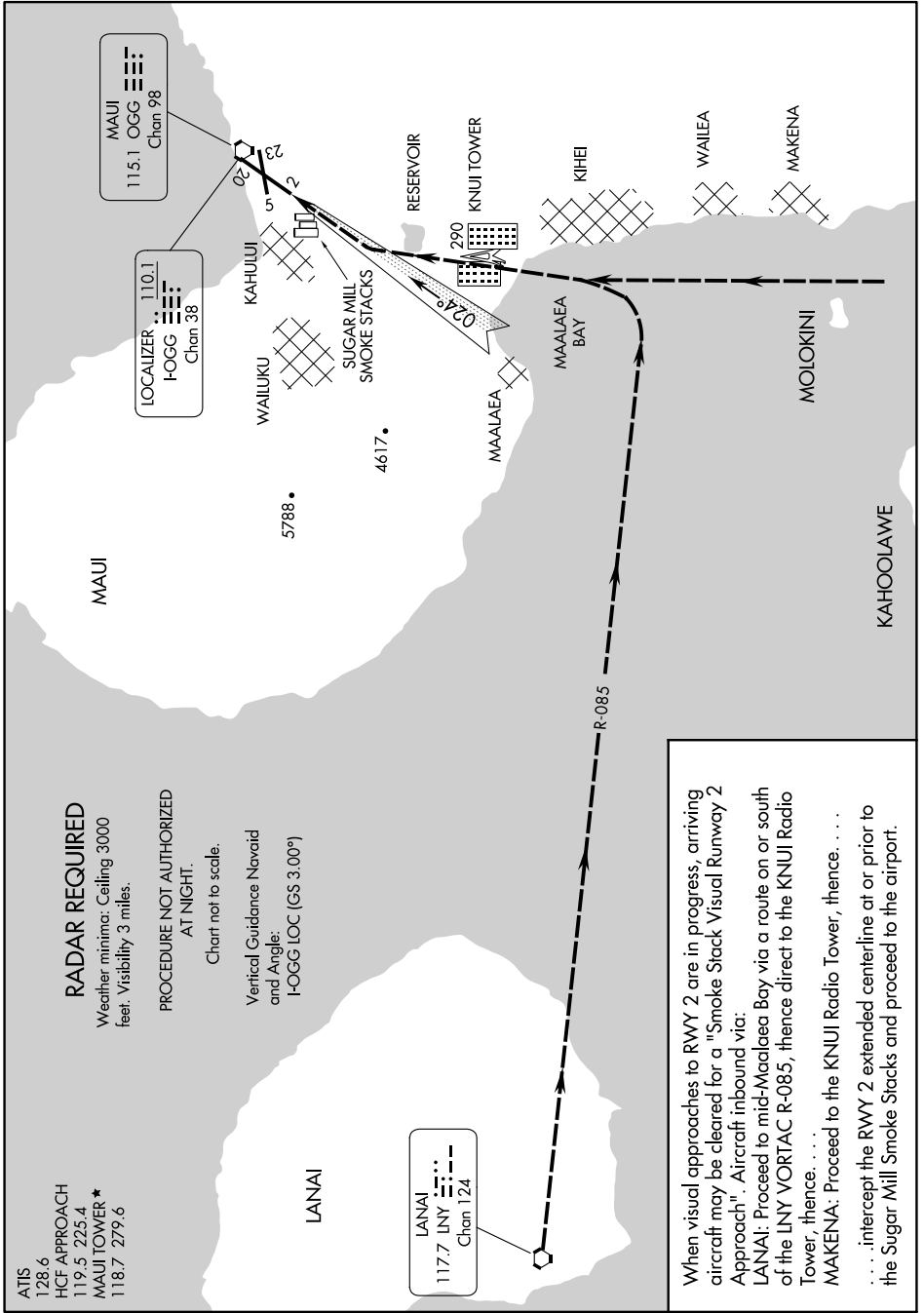


SMOKE STACK VISUAL RWY 2

PAC, 25 JAN 2024 to 21 MAR 2024



When visual approaches to RWY 2 are in progress, arriving aircraft may be cleared for a "Smoke Stack Visual Runway 2 Approach". Aircraft inbound via:
LANAI: Proceed to mid-Maalaea Bay via a route on or south of the LNY VORTAC R-085, thence direct to the KNUJ Radio Tower, thence. . . .
MAKENA: Proceed to the KNUJ Radio Tower, thence. . . .
. . . . intercept the RWY 2 extended centerline at or prior to the Sugar Mill Smoke Stacks and proceed to the airport.

PAC, 25 JAN 2024 to 21 MAR 2024

SMOKE STACK VISUAL RWY 2

20° 54'N-156° 26'W