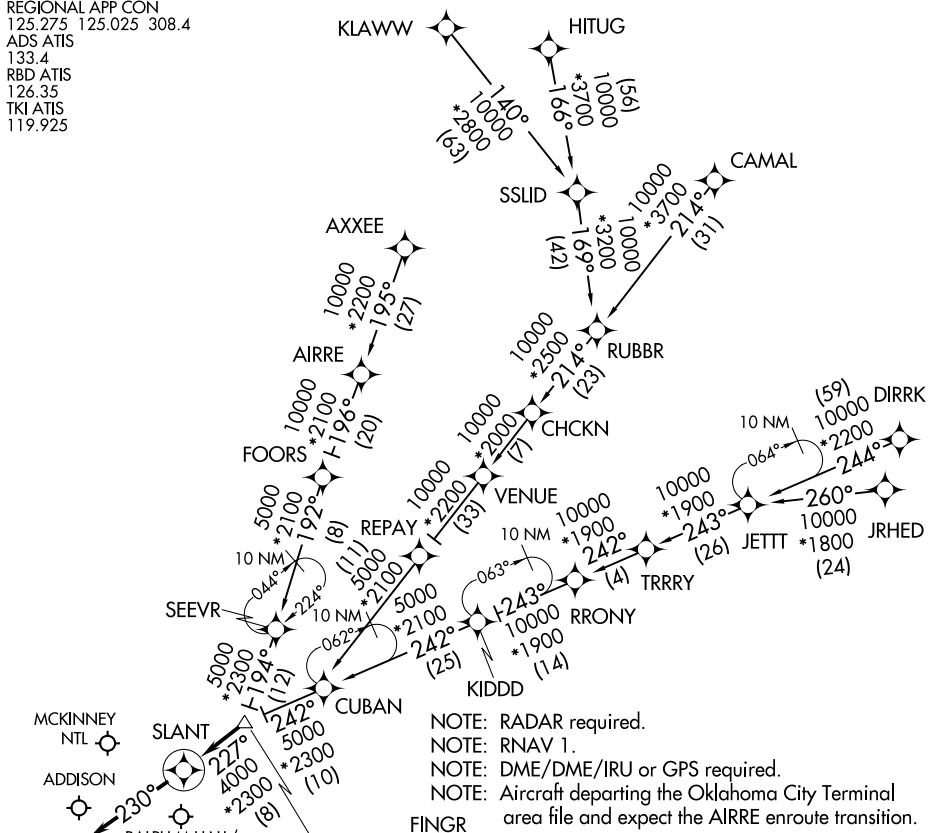


SLANT THREE ARRIVAL (RNAV)

DALLAS, TEXAS

REGIONAL APP CON
 125.275 125.025 308.4
 ADS ATIS
 133.4
 RBD ATIS
 126.35
 TKI ATIS
 119.925



NOTE: RADAR required.
 NOTE: RNAV 1.
 NOTE: DME/DME/IRU or GPS required.
 NOTE: Aircraft departing the Oklahoma City Terminal area file and expect the AIRRE enroute transition.

VERTICAL NAVIGATION
PLANNING INFORMATION
 TURBOJETS: Expect 8000
 PROPS: Expect 6000 or 7000

NOTE: Chart not to scale.

ARRIVAL ROUTE DESCRIPTION

- AIRRE TRANSITION (AIRRE.SLANT3): (For traffic filing FL190 and below.)
- AXEE TRANSITION (AXEE.SLANT3): (For aircraft filing FL230 and below.)
- CAMAL TRANSITION (CAMAL.SLANT3)
- DIRRK TRANSITION (DIRRK.SLANT3)
- HITUG TRANSITION (HITUG.SLANT3)
- JRHED TRANSITION (JRHE.SLANT3): (ATC assigned only.)
- KLAWW TRANSITION (KLAWW.SLANT3)
- RRON TRANSITION (RRON.SLANT3): (For aircraft filing FL230 and below.)

From FINGR on track 227° to SLANT, then on track 230°.
 Expect RADAR vectors to final approach course.

SLANT THREE ARRIVAL (RNAV)

DALLAS, TEXAS

SC-2, 22 FEB 2024 to 21 MAR 2024

SC-2, 22 FEB 2024 to 21 MAR 2024