

WAAS CH 56323 W01A	APP CRS 013°	Rwy Idg TDZE Apt Elev 6750 2495 2504
--	------------------------	--

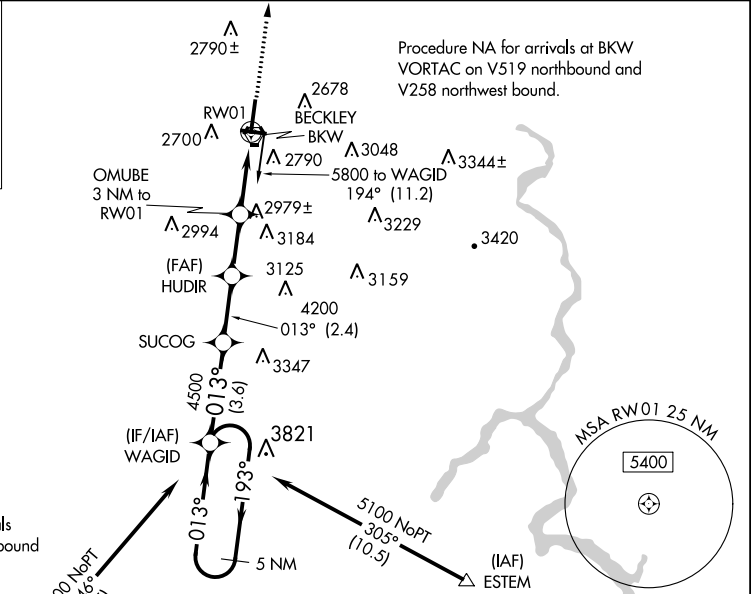
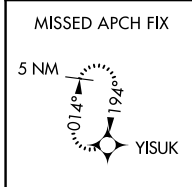
RNAV (GPS) RWY 1

RALEIGH COUNTY MEML (BKW)

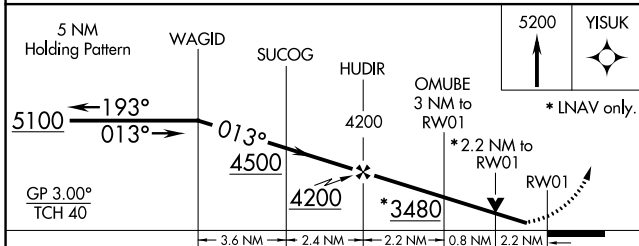
▼ Baro-VNAV NA when using Bluefield altimeter setting. For uncompensated Baro-VNAV systems, LNAV/VNAV NA below -19°C (-2°F) or above 28°C (82°F). DME/DME RNP-0.3 NA.
▲ Helicopter visibility reduction below ¾ SM NA. When local altimeter not received, use Bluefield altimeter setting and increase all DA 118 feet and all MDA 120 feet; increase LPV all Cats visibility ½ SM, LNAV/VNAV all Cats visibility ¼ SM, LNAV Cat C/D visibility ½ SM, and Circling Cat A/C visibility ¼ SM.

MISSED APPROACH:
Climb to 5200 direct YISUK and hold.

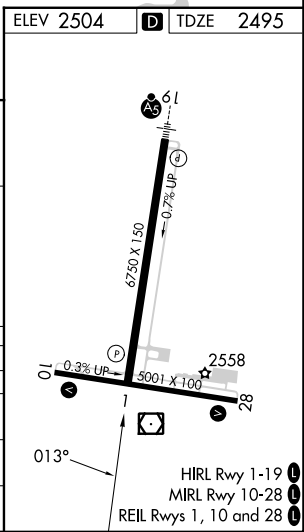
ASOS 121.55	CHARLESTON APP CON 125.4 269.125	UNICOM 123.0 (CTAF) 0
-----------------------	--	---------------------------------



ELEV 2504	D TDZE 2495
-----------	--------------------



CATEGORY	A	B	C	D
LPV DA	2810-1		315 (400-1)	
LNAV/VNAV DA	3093-2 ¼		598 (600-2 ¼)	
LNAV MDA	3240-1 745 (800-1)	3240-1 ¼ 745 (800-1 ¼)	3240-2 745 (800-2)	745 (800-2)
C CIRCLING	3240-1 736 (800-1)	3240-1 ¼ 736 (800-1 ¼)	3320-2 ½ 816 (900-2 ½)	3500-3 996 (1000-3)



NE-4, 22 FEB 2024 to 21 MAR 2024

NE-4, 22 FEB 2024 to 21 MAR 2024