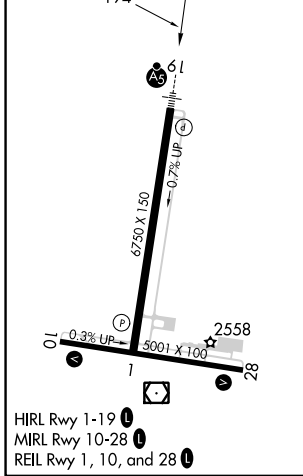
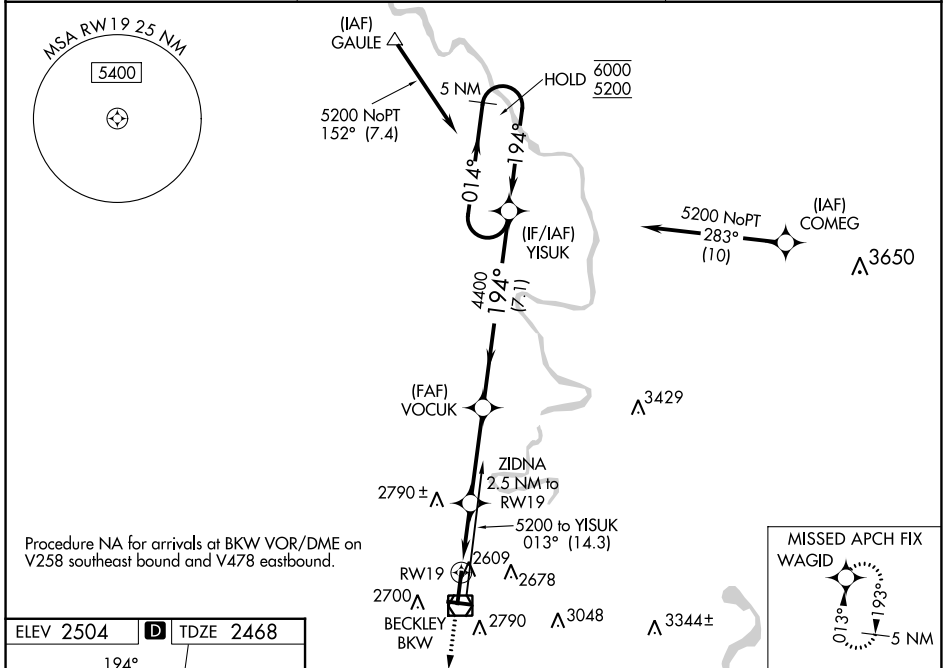


WAAS CH <b>63011</b> <b>W19A</b>	APP CRS <b>194°</b>	Rwy Idg TDZE Apt Elev	<b>6750</b> <b>2468</b> <b>2504</b>
--	------------------------	-----------------------------	---

# RNAV (GPS) RWY 19

RALEIGH COUNTY MEML (BKW)

RNP APCH. ▼ ▲ Baro-VNAV NA.	MALSR AS	MISSED APPROACH: Climb to 5100 direct WAGID and hold.
ASOS <b>121.55</b>	CHARLESTON APP CON <b>125.4 269.125</b>	UNICOM <b>123.0 (CTAF) 0</b>



ELEV 2504	<b>D</b>	TDZE 2468				
5100 WAGID *RNAV only. *1.3 NM to RWY 19 ZIDNA 2.5 NM to RWY 19 VOYUK 4400 YISUK 5 NM Holding Pattern 014° → 6000 ← 194° 5200 GP 3.00° TCH 55						
CATEGORY LPV DA LNAV/VNAV DA LNAV MDA <b>C</b> CIRCLING			A	B	C	D
				2688-½	220 (200-½)	
				2801-⅝	333 (300-⅝)	
			2920-½	452 (500-½)	2920-⅞	452 (500-⅞)
			3120-1 616 (700-1)	3180-1 676 (700-1)	3320-2½ 816 (900-2½)	3500-3 996 (1000-3)

NE-4, 22 FEB 2024 to 21 MAR 2024

NE-4, 22 FEB 2024 to 21 MAR 2024