

LOC I- <b>UIN</b> <b>110.1</b>	APP CRS <b>038°</b>	Rwy Idg <b>7098</b>
		TDZE <b>760</b>
		Apt Elev <b>769</b>

# ILS or LOC RWY 4

QUINCY RGNL-BALDWIN FLD (UIN)

ADF or DME required.  
RADAR required for procedure entry at RAYOK.

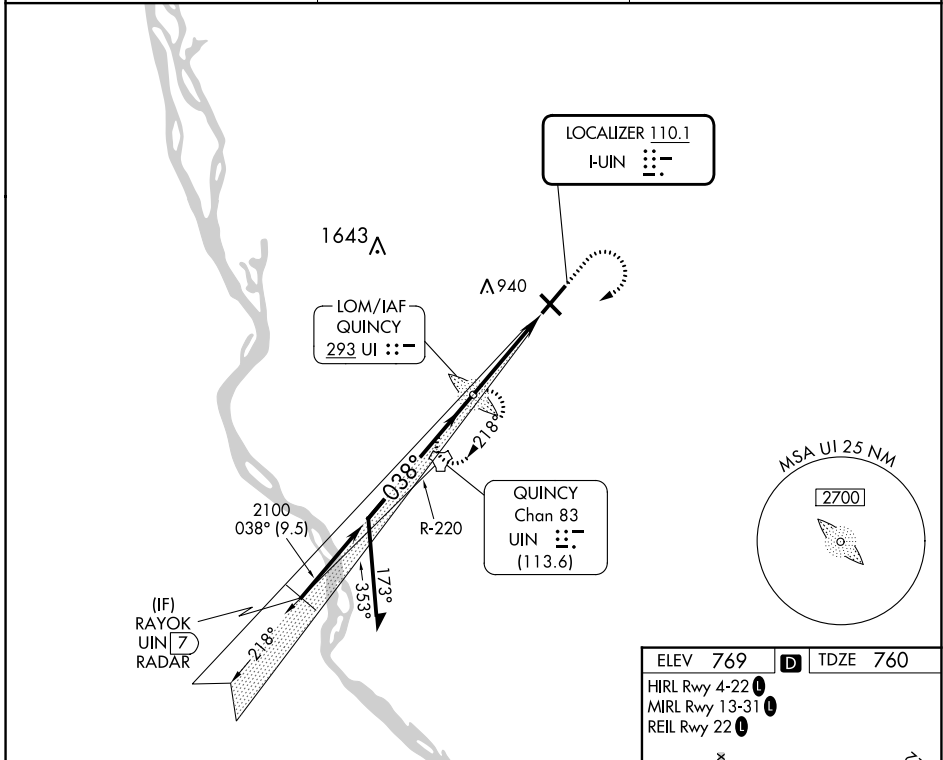
**▽** For inop ALS, increase S-ILS 4 all Cats visibility to ¾ SM and S-LOC 4 Cat C and D visibility to 1 SM.

**▲** NA



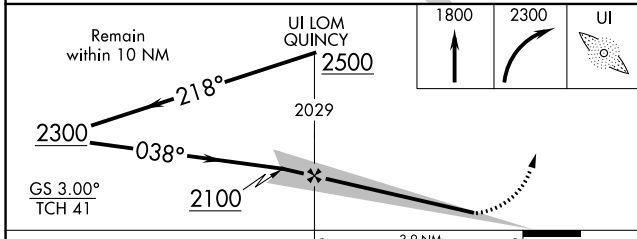
MISSED APPROACH: Climb to 1800 then climbing right turn to 2300 direct QUINCY LOM and hold.

ASOS <b>121.425</b>	KANSAS CITY CENTER <b>126.225 317.775</b>	UNICOM <b>123.0 (CTAF) 0</b>
------------------------	--	---------------------------------

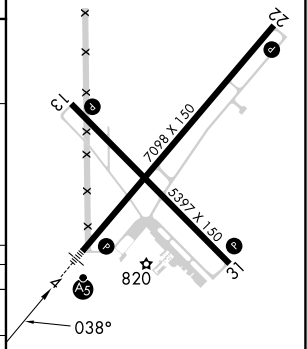


EC-3, 22 FEB 2024 to 21 MAR 2024

EC-3, 22 FEB 2024 to 21 MAR 2024



ELEV 769	<b>D</b>	TDZE 760
HIRL Rwy 4-22	<b>1</b>	
MIRL Rwy 13-31	<b>1</b>	
REIL Rwy 22	<b>1</b>	



CATEGORY	A	B	C	D
S-ILS 4	960-½ 200 (200-½)			
S-LOC 4	1140-½	380 (400-½)	1140-⅝	380 (400-⅝)
<b>C</b> CIRCLING	1180-1 411 (500-1)	1220-1 451 (500-1)	1240-1½ 471 (500-1½)	1320-2 551 (600-2)

FAF to MAP 3.9 NM					
Knots	60	90	120	150	180
Min:Sec	3:54	2:36	1:57	1:34	1:18