

WAAS CH <b>65910</b> <b>W13A</b>	APP CRS <b>133°</b>	Rwy Idg TDZE <b>5123</b> <b>767</b> Apt Elev <b>769</b>
--	------------------------	--

# RNAV (GPS) RWY 13

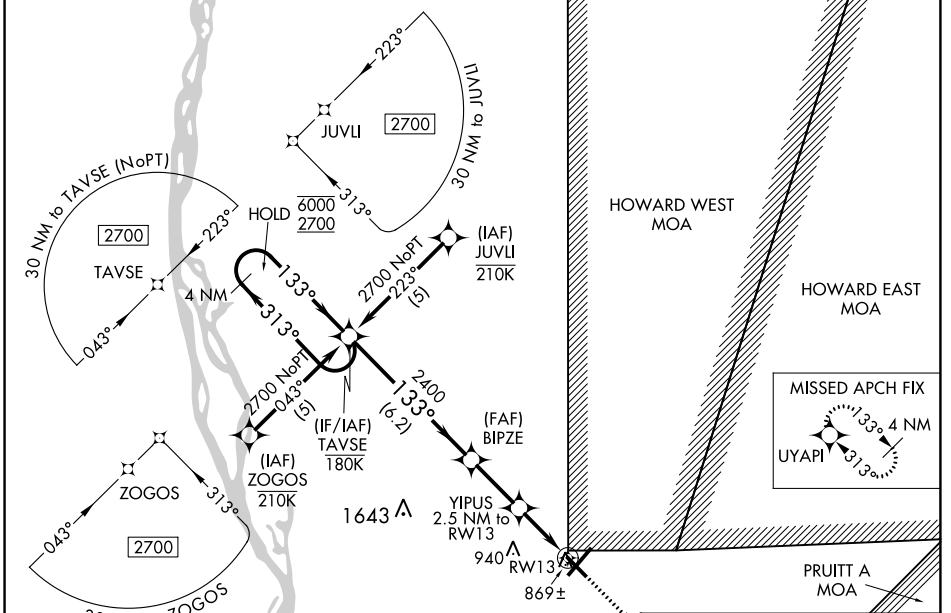
QUINCY RGNL-BALDWIN FLD (UIN)

RNP APCH.

**⚠** For uncompensated Baro-VNAV systems, LNAV/VNAV NA below -16° C or above 54° C.

MISSED APPROACH:  
Climb to 2700 direct UYAPI and hold.

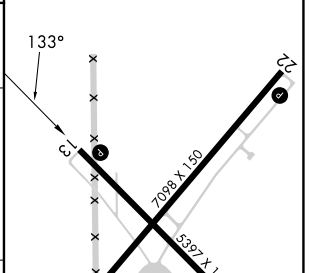
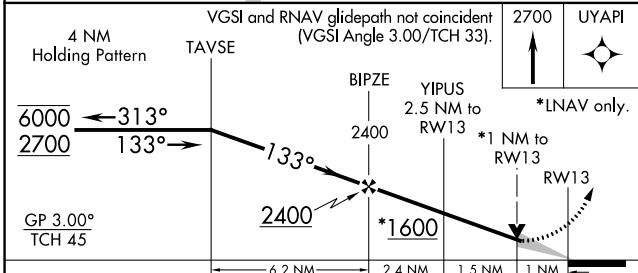
ASOS <b>121.425</b>	KANSAS CITY CENTER <b>126.225 317.775</b>	UNICOM <b>123.0 (CTAF)</b>
------------------------	--	-------------------------------



EC-3, 22 FEB 2024 to 21 MAR 2024

EC-3, 22 FEB 2024 to 21 MAR 2024

ELEV 769	<b>D</b>	TDZE 767
----------	----------	----------



CATEGORY	A	B	C	D
LPV DA		1116-1¼	349 (400-1¼)	
LNAV/VNAV DA		1139-1¼	372 (400-1¼)	
LNAV MDA	1120-1	353 (400-1)		1120-1¼ 353 (400-1¼)
CIRCLING	1180-1 411 (500-1)	1220-1 451 (500-1)	1240-1½ 471 (500-1½)	1320-2 551 (600-2)

HIRL Rwy 4-22 **Ⓛ**  
MIRL Rwy 13-31 **Ⓛ**  
REIL Rwy 22 **Ⓛ**