

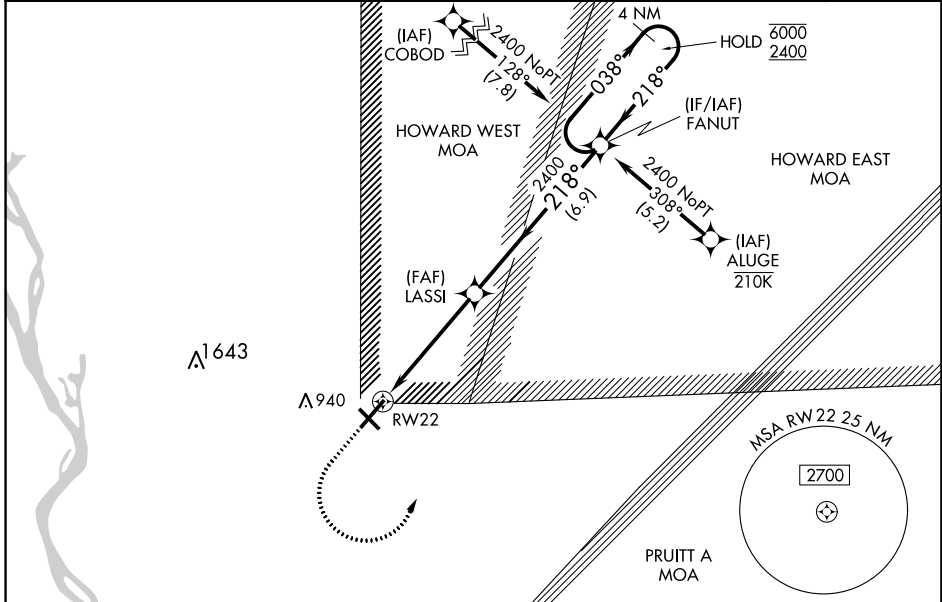
WAAS CH 45705 W22A	APP CRS 218°	Rwy Idg 7098
	TDZE 747	
	Apt Elev 769	

# RNAV (GPS) RWY 22

QUINCY RGNL-BALDWIN FLD (UIN)

RNP APCH - GPS.	MISSED APPROACH: Climb to 1200 then climbing left turn to 2400 direct FANUT and hold.
<p>For uncompensated Baro-VNAV systems, LNAV/VNAV NA below -21°C or above 54°C.</p>	

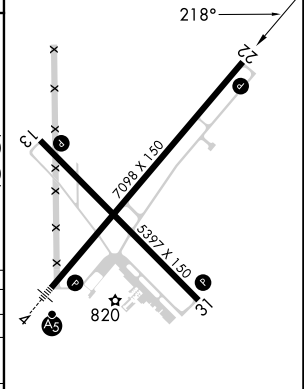
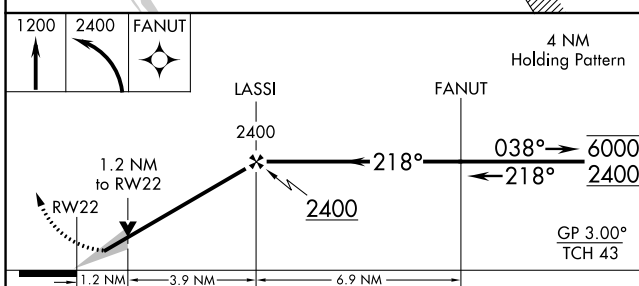
ASOS 121.425	KANSAS CITY CENTER 126.225 317.775	UNICOM 123.0 (CTAF)
-----------------	---------------------------------------	------------------------



EC-3, 22 FEB 2024 to 21 MAR 2024

EC-3, 22 FEB 2024 to 21 MAR 2024

ELEV 769		TDZE 747
----------	--	----------



CATEGORY	A	B	C	D
LPV DA		997-3/4	250 (300-3/4)	
LNAV/VNAV DA		1050-7/8	303 (300-7/8)	
LNAV MDA	1180-1	433 (500-1)	1180-1 1/4	433 (500-1 1/4)
CIRCLING	1180-1 411 (500-1)	1220-1 451 (500-1)	1240-1 1/2 471 (500-1 1/2)	1320-2 551 (600-2)

HIRL Rwy 4-22   
MIRL Rwy 13-31   
REIL Rwy 22