

WAAS CH 53510 W04A	APP CRS 038°	Rwy Idg 7098 TDZE 760 Apt Elev 769
--	------------------------	---

RNAV (GPS) RWY 4

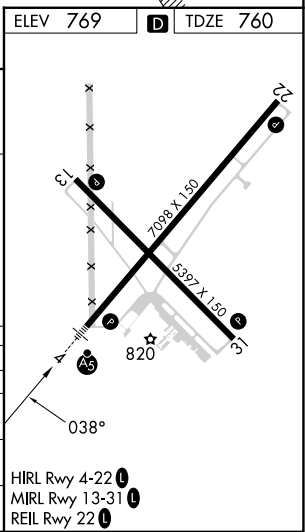
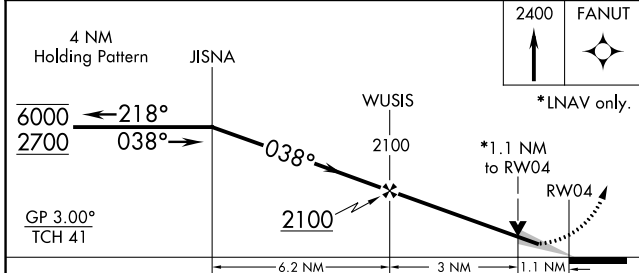
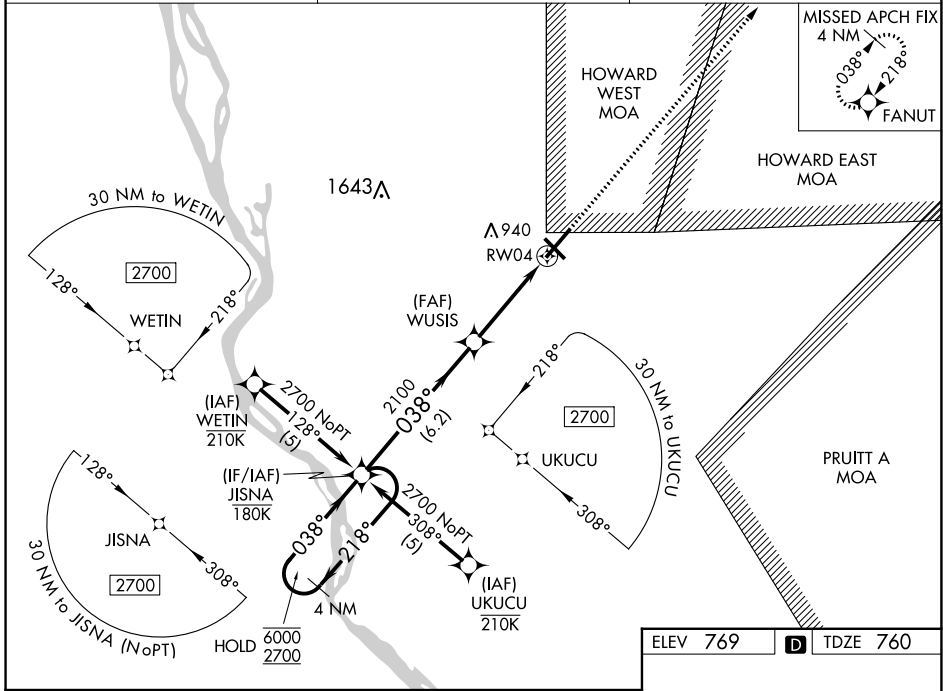
QUINCY RGNL-BALDWIN FLD (UIN)

RNP APCH. MALSR

For uncompensated Baro-VNAV systems, LNAV/VNAV NA below -16° C or above 54° C. For inop ALS increase LNAV Cat D visibility to 1/4 SM.

MISSED APPROACH:
Climb to 2400 direct
FANUT and hold.

ASOS 121.425	KANSAS CITY CENTER 126.225 317.775	UNICOM 123.0 (CTAF) 0
------------------------	--	---------------------------------



CATEGORY	A	B	C	D
LPV DA		960-1/2	200 (200-1/2)	
LNAV/VNAV DA		1139-3/4	379 (400-3/4)	
LNAV MDA	1160-1/2	400 (400-1/2)		1160-1 400 (400-1)
CIRCLING	1180-1 411 (500-1)	1220-1 451 (500-1)	1240-1 1/2 471 (500-1 1/2)	1320-2 551 (600-2)

EC-3, 22 FEB 2024 to 21 MAR 2024

EC-3, 22 FEB 2024 to 21 MAR 2024