

APP CRS 158°	Rwy Idg TDZE Apt Elev	4311 289 296
------------------------	-----------------------------	---

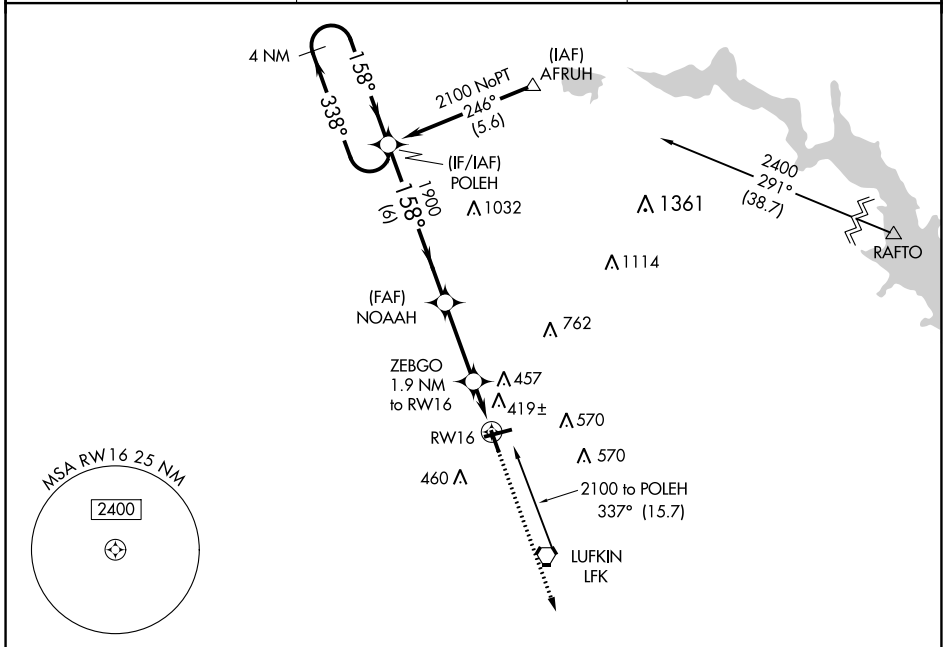
RNAV (GPS) RWY 16

ANGELINA COUNTY (L'FK)

⚠ DME/DME RNP-0.3 NA.
⚠ Straight in Rwy 16 NA at night, Circling Rwy 16, 25 NA at night.
 Rwy 16 helicopter visibility reduction below 1 SM NA.

MISSED APPROACH: Climb to 2000 direct EXISE and hold.

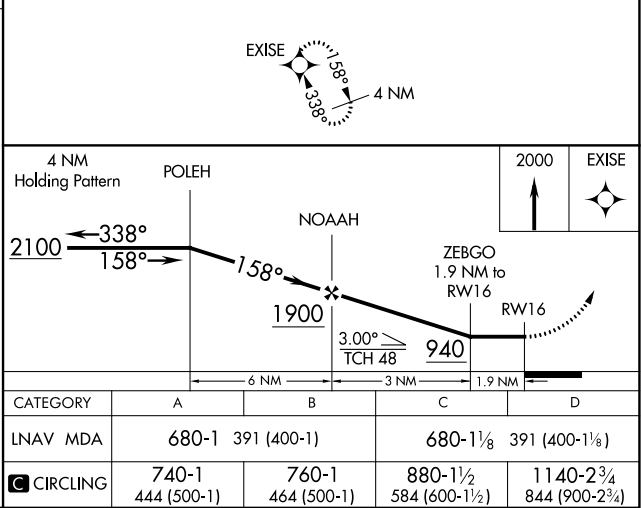
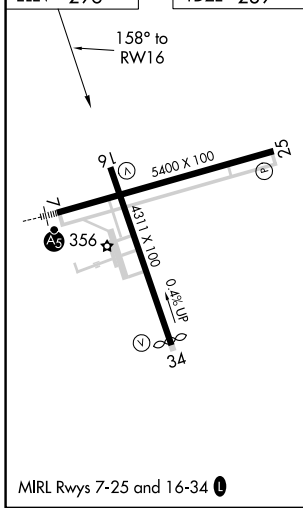
ASOS 120.625	HOUSTON CENTER 125.175 285.575	UNICOM 123.0 (CTAF) 0
------------------------	--	---------------------------------



SC-5, 22 FEB 2024 to 21 MAR 2024

SC-5, 22 FEB 2024 to 21 MAR 2024

ELEV 296	TDZE 289
-----------------	-----------------



LUFKIN, TEXAS
 Amdt 1 07DEC17

31°14'N-94°45'W

ANGELINA COUNTY (L'FK)

RNAV (GPS) RWY 16