

APP CRS 338°	Rwy Idg 4204
	TDZE 286
	Apt Elev 296

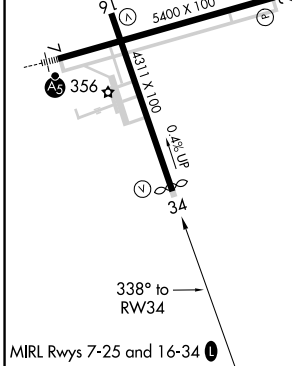
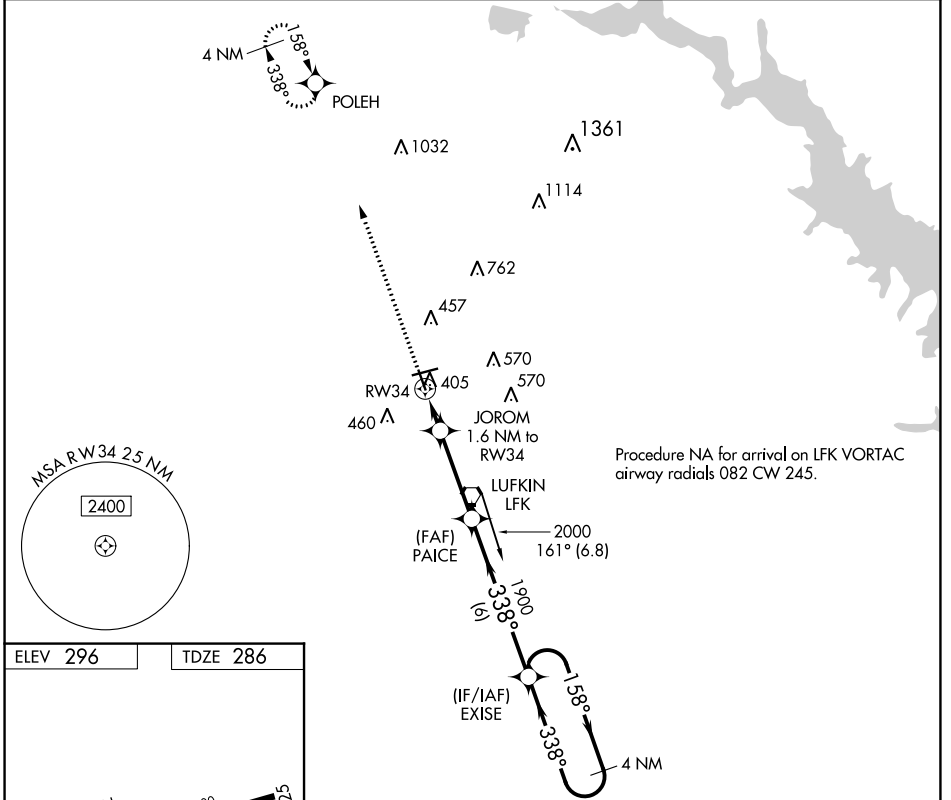
RNAV (GPS) RWY 34

ANGELINA COUNTY (L^{FL}K)

▼ DME/DME RNP-0.3 NA. Circling Rwy 16, 25 NA at night.
▲ Rwy 34 helicopter visibility reduction below ¾ SM NA.

MISSED APPROACH: Climb to 2100 direct POLEH and hold.

ASOS 120.625	HOUSTON CENTER 125.175 285.575	UNICOM 123.0 (CTAF) 0
------------------------	--	---------------------------------



2100 POLEH	JOROM 1.6 NM to RW34	PAICE	EXISE	4 NM Holding Pattern
1900	1900	1900	1900	1900
840	840	840	840	840
1 NM to RW34	1.0 NM to RW34	3.3 NM	6 NM	4 NM
1 NM	0.6	3.3 NM	6 NM	4 NM
CATEGORY	A	B	C	D
LNAV MDA	660-1 374 (400-1)			
CIRCLING	740-1 444 (500-1)	760-1 464 (500-1)	880-1½ 584 (600-1½)	1140-2¾ 844 (900-2¾)

SC-5, 22 FEB 2024 to 21 MAR 2024

SC-5, 22 FEB 2024 to 21 MAR 2024