

VORTAC LFK 112.1 Chan 58	APP CRS 152°	Rwy Idg TDZE 289 Apt Elev 296	4311
--	------------------------	---	-------------

VOR RWY 16
ANGELINA COUNTY (L'FK)

⚠ Rwy 16 helicopter visibility reduction below 1 SM NA.
⚠ DME Required. Straight-in Rwy 16 NA at night,
Circling Rwy 16, 25 NA at night.

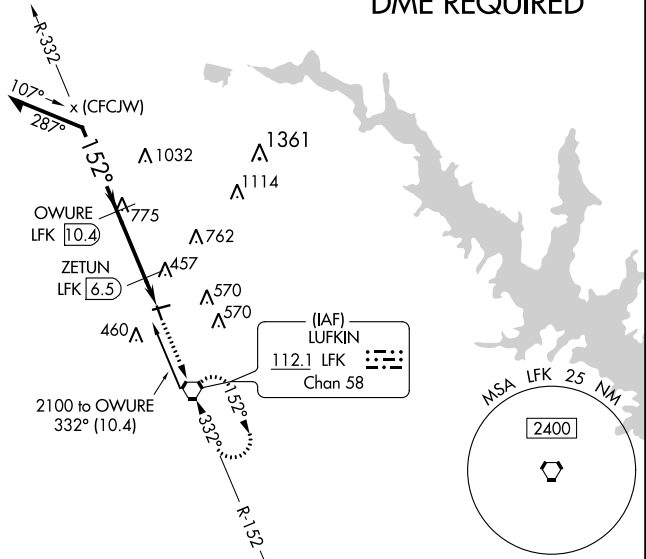
MISSED APPROACH: Climb to 2000 on LFK VORTAC
R-332 to LFK VORTAC and hold.

ASOS
120.625

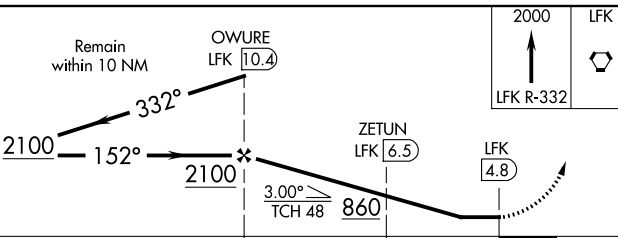
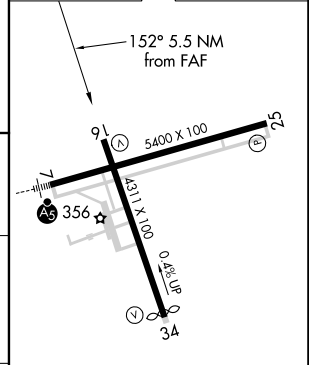
HOUSTON CENTER
125.175 285.575

UNICOM
123.0 (CTAF) **0**

DME REQUIRED



ELEV	296	TDZE	289
------	-----	------	-----



CATEGORY	A	B	C	D
S-16	720-1 431 (500-1)		720-1¼ 431 (500-1¼)	
C CIRCLING	740-1 444 (500-1)	760-1 464 (500-1)	880-1½ 584 (600-1½)	1140-2¾ 844 (900-2¾)

MIRL Rwy 7-25 and 16-34 **0**

SC-5, 22 FEB 2024 to 21 MAR 2024

SC-5, 22 FEB 2024 to 21 MAR 2024