

APP CRS	Rwy Idg	<b>4000</b>
<b>329°</b>	TDZE	<b>692</b>
	Apt Elev	<b>692</b>

# RNAV (GPS) RWY 33

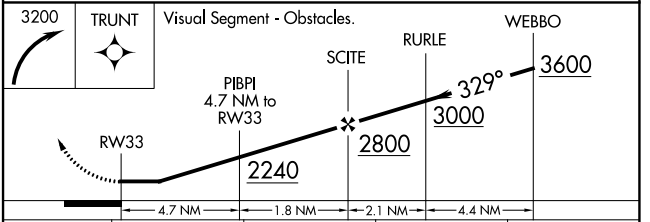
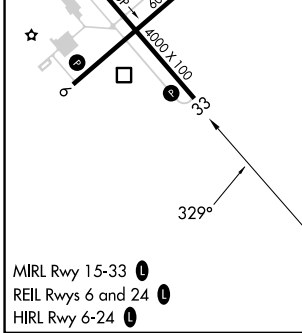
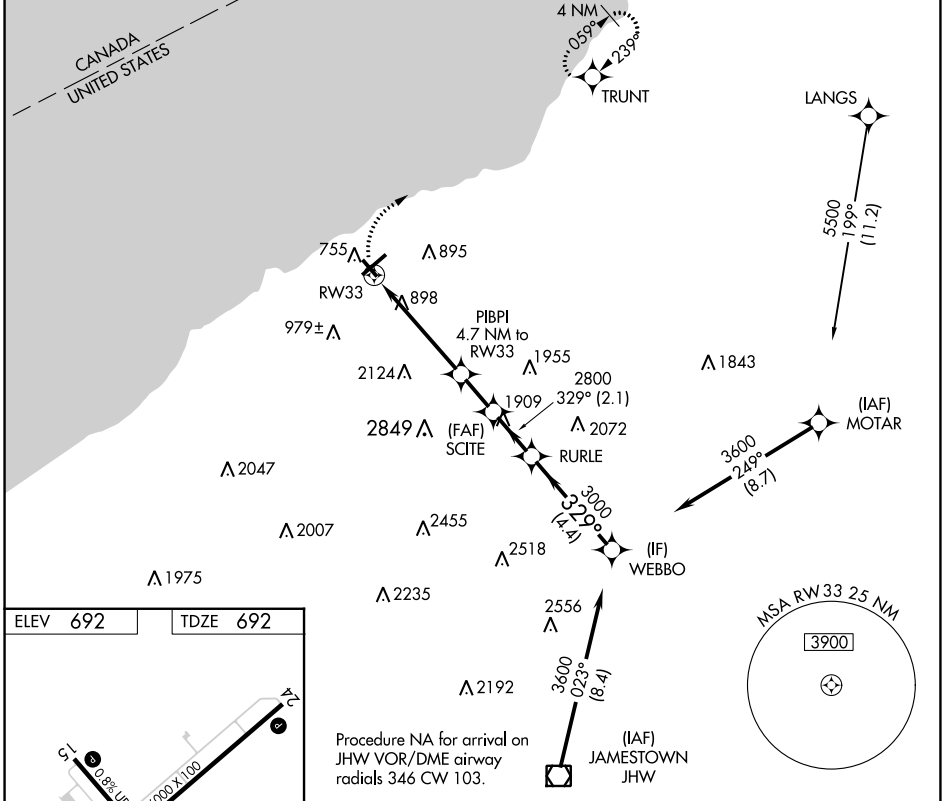
CHAUTAUQUA COUNTY/DUNKIRK (DKK)

RNP APCH.

**T** Circling Cat D NA southeast of Rwy 6 and southwest of Rwy 33.  
**A** Rwy 33 helicopter visibility reduction below 1 SM NA.  
**S** -22°C Straight-In Rwy 33 NA at night, Circling Rwy 6, 24, 33 NA at night.

MISSED APPROACH: Climbing right turn to 3200 direct TRUNT and hold.

ASOS <b>119.275</b>	BUFFALO APP CON <b>126.5 317.6</b>	UNICOM <b>123.075 (CTAF)</b> <b>0</b>
------------------------	---------------------------------------	--



CATEGORY	A	B	C	D
LNAV MDA	1860-1¼ 1168 (1200-1¼)	1860-1½ 1168 (1200-1½)	1860-3	1168 (1200-3)
<b>C</b> CIRCLING	1860-1¼ 1168 (1200-1¼)	1860-1½ 1168 (1200-1½)	1860-3	2140-3 1448 (1500-3)

NE-2, 22 FEB 2024 to 21 MAR 2024

NE-2, 22 FEB 2024 to 21 MAR 2024